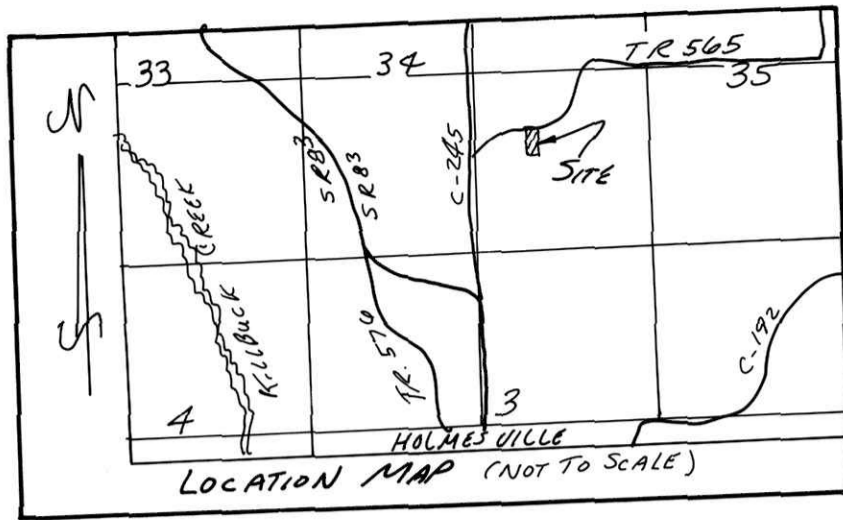
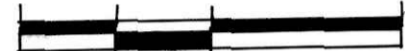


FLORENCE WILLIAMS ALLOTMENT NO. 4



PRAIRIE TOWNSHIP
S.E. QTR. SECTION 34
T-14 N; R-13 W
HOLMES COUNTY, OHIO

0 30 60 120



SCALE: 1"=60'

- ▲ R.R. SPIKE FOUND
- IRON PIN FOUND
- △ R.R. SPIKE SET
- 5/8" RE BAR WITH 1.0. CAP SET (I.D. CAP MARKED "BAKER 6938")

REFERENCES:

- DEED VOL. 245 PAGE 635
- DEED VOL. 232 PAGE 618
- PLAT VOL. 10 PAGE 673
- PLAT VOL. 12 PAGE 349
- PLAT VOL. 6 PAGE 113

AREA IN LOT	2.000 Acres
AREA IN ROAD DEDICATION	0.000 ACRES
TOTAL AREA IN ALLOTMENT	2.000 ACRES

GRANTOR:

FLORENCE WILLIAMS (TRUSTEE)
107 LONG HORN RD.
WINTER PARK, FLA 32792

AGENT:

JOHN R. WEAVER
DUTCHLAND REALTY
5248 S.R. 39 W
BERLIN, OHIO 44610
PH. (216) 893-2255

PREPARED BY:

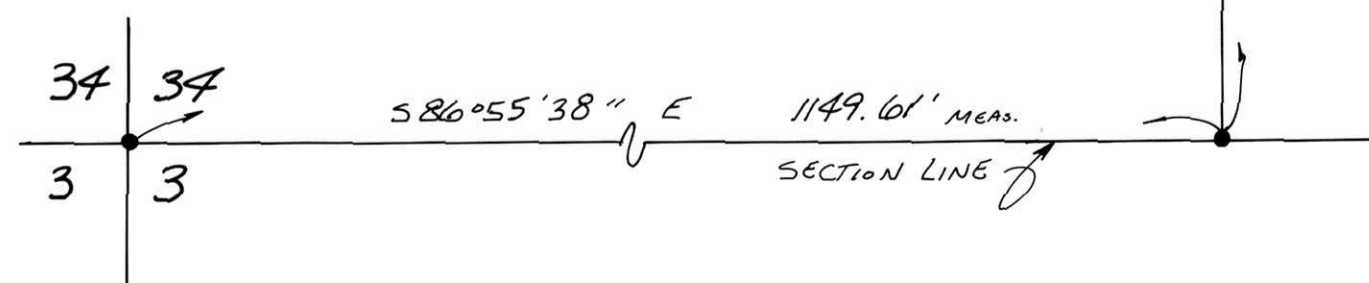
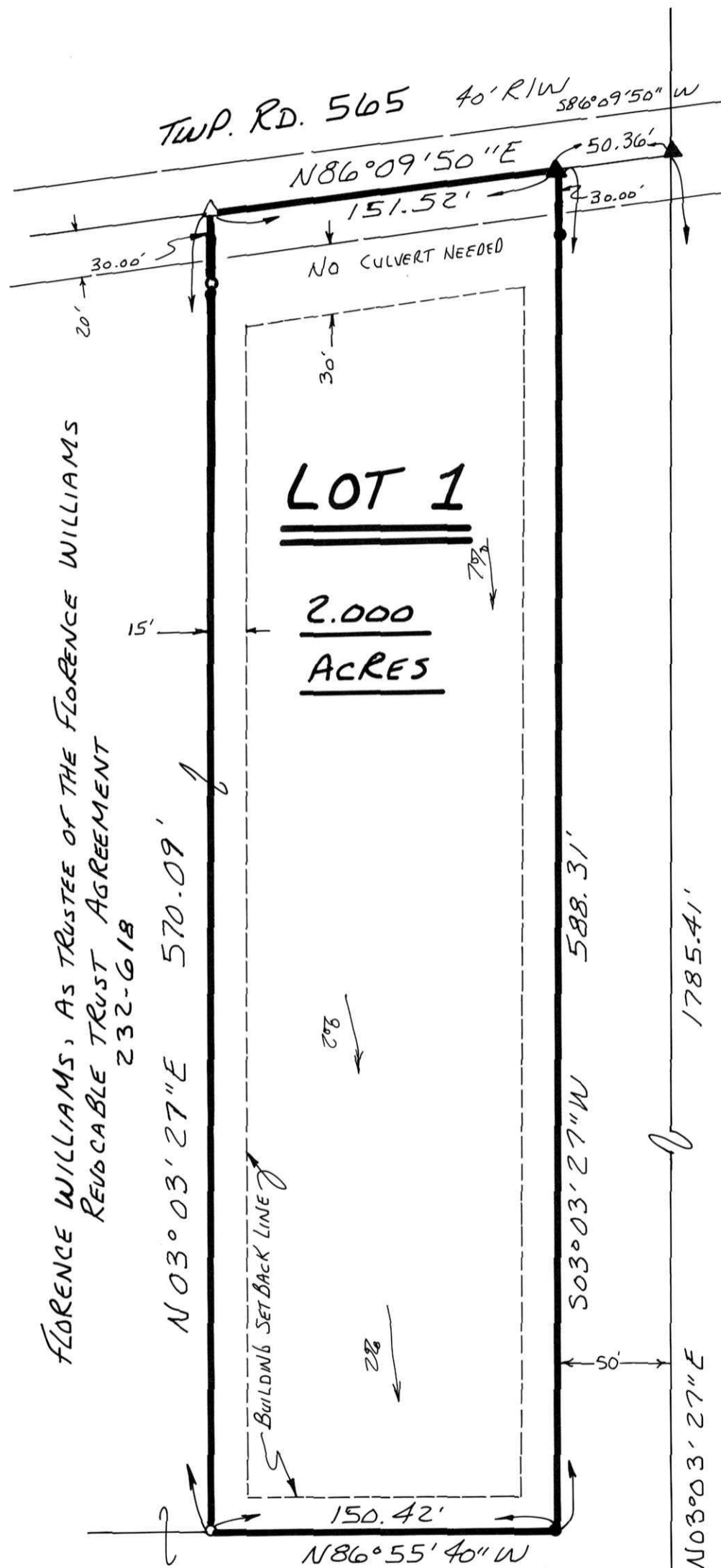
DONALD C. BAKER SURVEYING (P.S. 6938)
5958 T.R. 322
MILLERSBURG, OHIO 44654
PH. (216) 674-4788

NOTE: TYPICAL BUILDING SETBACK;
15' OFF SIDE AND BACK LINES.
30' OFF ROAD RIGHT-OF-WAY LINE.

For erosion control, the landowner will follow the Ohio Technical Standard and Specifications Critical Area Planting #342 Guidelines. A copy of this Technical Standards and Specifications Guide is available at the Holmes Soil and Water Conservation District, 62 West Clinton Street, Millersburg, OH 44654

This lot is for residential purposes only.

No further splits will be permitted without replatting said lot.



CERTIFICATE OF OWNERSHIP AND DEDICATION
We hereby certify that we are the owners of the property shown and described hereon and that we hereby adopt this plan of subdivision with our free consent, establish the minimum building restriction lines, and dedicate all streets, alleys, walks, parks, and other open spaces to public or private use as noted.

Florence Williams, Trustee
Date 9/1/95

CERTIFICATE OF THE APPROVAL OF WATER AND SEWERAGE SYSTEMS
I hereby certify that the water supply and sewage disposal utility systems installed or proposed for installation, in the subdivision plat entitled: Florence Williams Allotment No. 4 fully meet the requirements of the Holmes County Board of Health and the Ohio State Health Department, and are hereby approved as shown.

Date 9-7-95
Mark Stuber
County Health Commissioner

CERTIFICATE OF APPROVAL BY THE HOLMES SOIL AND WATER CONSERVATION DISTRICT
I hereby certify that I have approved the subdivision plat and/or agreements or provisions for sedimentation and erosion control as stated or shown hereon.

Date 9-7-95
W. Handmanchild
Holmes Soil and Conservation District

CERTIFICATE OF THE APPROVAL BY THE COUNTY COMMISSIONERS
I hereby certify that the Holmes County Commissioners have approved the subdivision plat as shown hereon.

Date 9-18-95
John W. Baker
Chairman, County Commissioners

194843

REC'D AT 10:05'clock A.M. RECORDED #21.60
OCT 10 95 OCT 11 95
PLAT VOL. 15 PAGE 65

CERTIFICATE OF THE APPROVAL OF PLAT AND ENGINEERING DETAILS
I hereby certify that I have approved the plat and engineering details of the proposed roads, sewer and water systems and other proposed public facilities in the subdivision plat as shown hereon.

Date 9/8/95
Robert L. Kosner P.E.P.S.
County Engineer

CERTIFICATE OF APPROVAL FOR RECORDING
I hereby certify that the subdivision plat shown hereon has been found to comply with the subdivision regulations for Holmes County, Ohio, with the exception of such variances, if any, as pvenoted in the minutes of the Holmes County Regional Planning Commission and that it has been approved for recording in the office of the County Recorder.

Date 9-19-95
Thomas P. Magante
Holmes Regional Planning Comm.

CERTIFICATE OF ACCURACY
I hereby certify that the plan shown and described hereon is a true and correct survey to the accuracy required by the Holmes Co. Regional Planning Commission and that the monuments have been placed as shown hereon.

Date 6-29-95
Donald C. Baker
Donald C. Baker P.S. 6938

DATE 10-10-95
REVISOR Richard A. Weaver

VOL 15 page 65