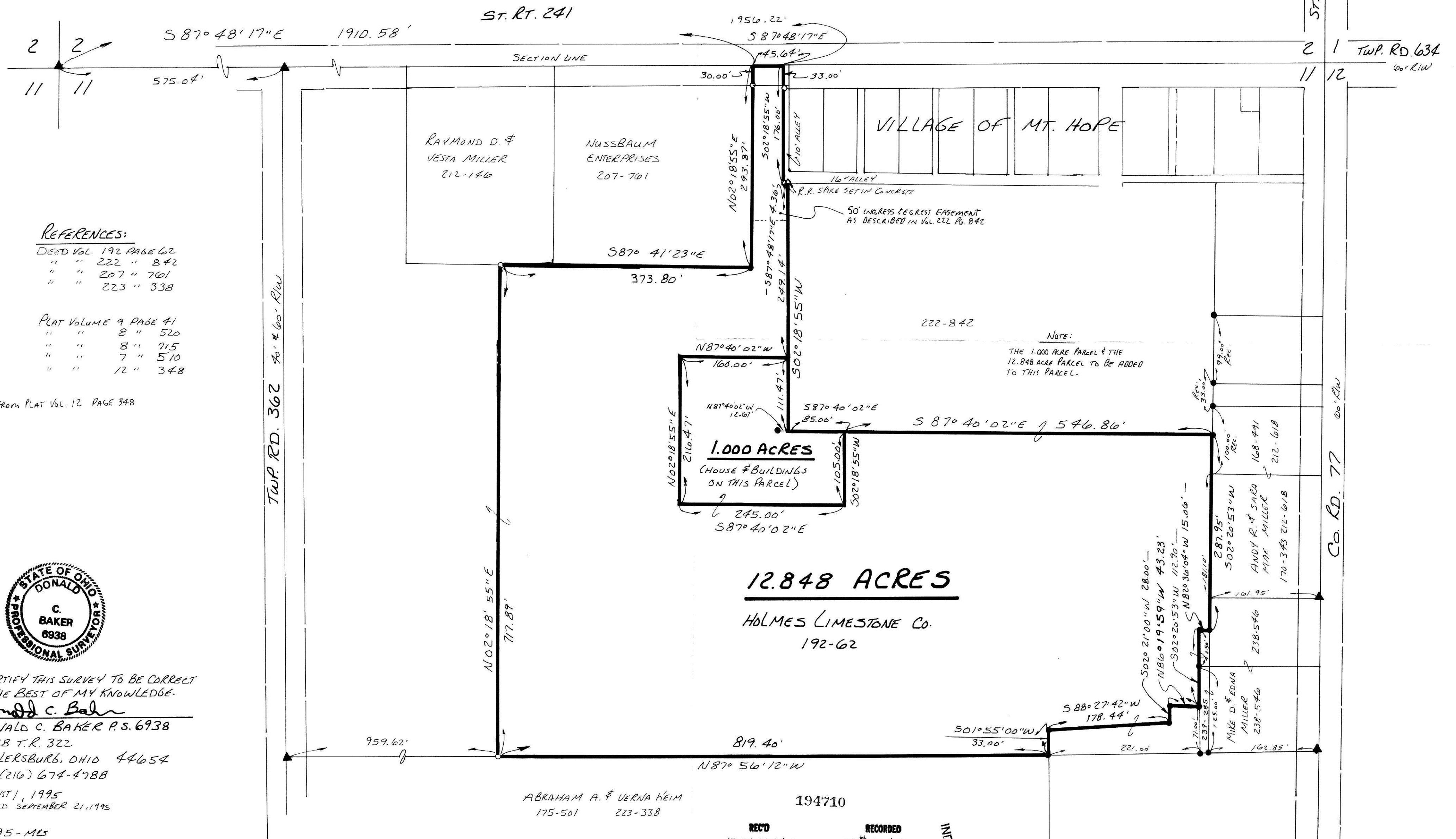
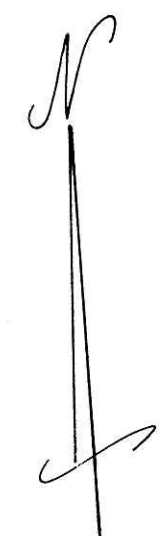
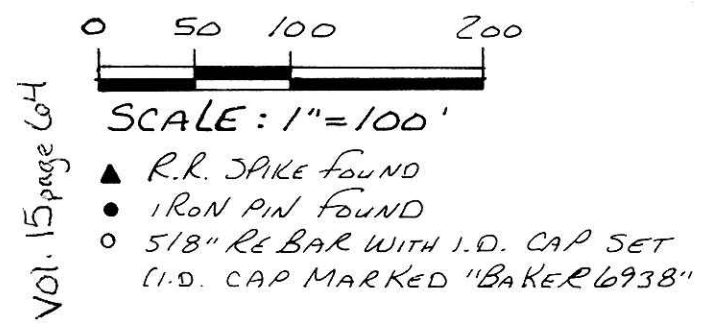


SALTCREEK TOWNSHIP N.E. QTR. SECTION 11 T-14N ; R-12W HOLMES COUNTY, OHIO

950198 950199
APPROVED FOR TRANSFER ONLY
NO SUBDIVISION PLAT REQUIRED
(O.P.C. 711.001 & 711.101)
Lot(s) not for building unless
approved by Board of Health,
HOLMES CO. PLANNING COMM.
By TBM Date 9-26-95



REFERENCES:

- DEED VOL. 192 PAGE 62
- " " 222 " 842
- " " 207 " 701
- " " 223 " 338
- PLAT VOLUME 9 PAGE 41
- " " 8 " 520
- " " 8 " 715
- " " 7 " 510
- " " 12 " 348

BEARINGS FROM PLAT VOL. 12 PAGE 348



I CERTIFY THIS SURVEY TO BE CORRECT TO THE BEST OF MY KNOWLEDGE.
Donald C. Baker
 DONALD C. BAKER P.S. 6938
 5958 T.R. 322
 MILLERSBURG, OHIO 44654
 PH. (216) 674-4788
 AUGUST 1, 1995
 REVISED SEPTEMBER 21, 1995
 24195-MLS
 FJM

12.848 ACRES

HOLMES LIMESTONE CO.
192-62

REC'D AT 10:49 o'clock A.M.
SEP 28 '95
 Plot
 VOL 15 PAGE 64
 0v 270 pgs 410-414

RECORDED FEE \$21.60
SEP 29 '95
 SALLY MILLER RECORDER

INDEXED

Plat "B"
PLAT APPROVED.
9/27/95 b