

PLAT OF SURVEY FOR HOLMES COUNTY, OHIO

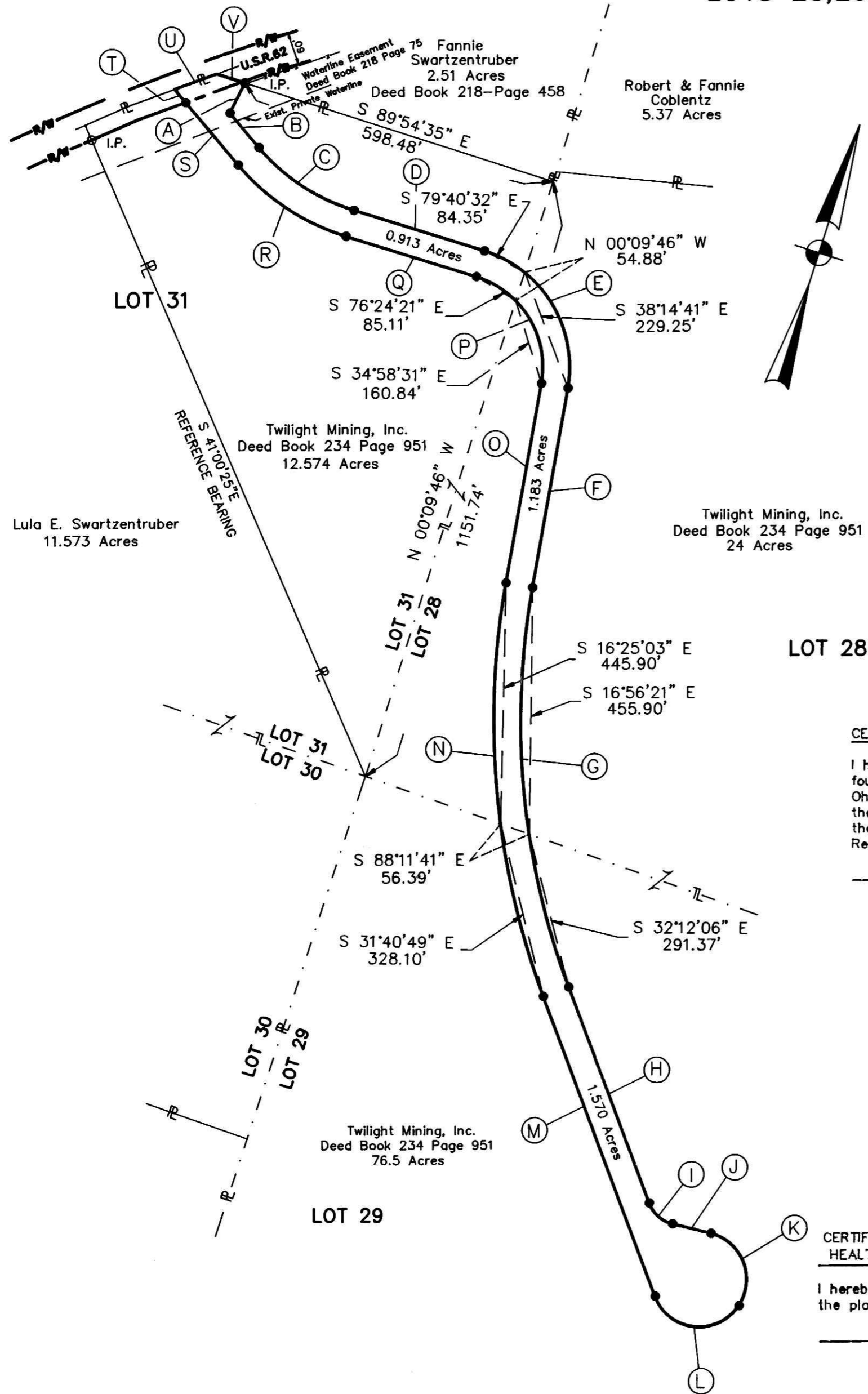
PAINT TOWNSHIP

FOURTH QUARTER-TOWNSHIP 10 RANGE 5
LOTS 28,29,31 - UNITED STATES MILITARY DISTRICT

194341

The Holmes County Board of Commissioners hereby accept the dedication of the 3.666 acre parcel for road purposes per Resolution No. 08-21-95-3

John W. Baker Date 8-21-95
[Signature] Date 8-21-95
Leah W. Miller Date 8-21-95



0 200 400
SCALE IN FEET

ARC= 325.40' T = 198.58'
CH= 297.77' Δ = 82°51'41"
CH BRG= S 49°02'55" E
R= 225.00'

ARC= 60.20' T = 32.71'
CH= 57.87' Δ = 55°38'11"
CH BRG= S 65°57'41" E
R= 62.00'

ARC= 193.64' T = 173.00'
CH= 156.87' Δ = 126°04'44"
CH BRG= S 78°49'02" W
R= 88.00'

ARC= 242.19' T = 124.48'
CH= 238.92' Δ = 32°39'01"
CH BRG= N 74°09'15" W
R= 425.00'

A	S 09°07'06" W	62.04'
B	S 57°49'45" E	83.23'
C		
D	N 89°31'14" E	252.58'
E		
F	S 07°37'05" E	373.81'
G		
H	S 38°08'36" E	426.67'
I		
J	N 86°13'13" E	73.49'
K		
L		
M	N 38°08'36" W	591.97'
N		
O	N 07°37'05" W	373.81'
P		
Q	S 89°31'14" W	252.58'
R		
S	N 57°49'45" W	150.74'
T	N 57°49'45" W	31.95'
U	N 52°17'37" E	82.92'
V	S 89°54'34" E	55.04'

ARC= 213.70' T = 109.84'
CH= 210.82' Δ = 32°39'01"
CH BRG= S 74°09'15" E
R= 375.00'

ARC= 749.81' T = 384.03'
CH= 740.97' Δ = 30°31'31"
CH BRG= S 22°52'50" E
R= 1407.39'

ARC= 168.27' T = 124.65'
CH= 143.78' Δ = 109°33'27"
CH BRG= S 39°00'03" E
R= 88.00'

ARC= 776.45' T = 397.68'
CH= 767.30' Δ = 30°31'31"
CH BRG= N 22°52'50" W
R= 1457.39'

ARC= 253.09' T = 154.45'
CH= 231.60' Δ = 82°51'41"
CH BRG= N 49°02'55" W
R= 175.00'

CERTIFICATE OF APPROVAL FOR RECORDING

I hereby certify that the plat shown hereon has been found to comply with the Regulations for Holmes County, Ohio, with the exception of such variances if any, as are noted in the minutes of the Holmes County Regional Planning Commission and that it has been approved for recording in the office of the County Recorder.

Date _____ 19__

Holmes County Regional Planning Commission

AREA

0.913 Ac. out of a 12.574 Ac. Parcel
1.183 Ac. out of a 24 Ac. Parcel
1.570 Ac. out of a 76.5 Ac. Parcel
3.666 Acres = TOTAL AREA

0.067 Ac. of the 3.666 Ac. Parcel
Falls in U.S. Route 62 Right of Way Limits

CERTIFICATION OF APPROVAL BY THE HOLMES COUNTY HEALTH DEPARTMENT

I hereby certify that the Holmes County Health Department has approved the plat as shown hereon.

Date OCTOBER 5 1990

Commissioner, Holmes County Health Department

Robert A. Lint, Jr.
ROBERT A. LINT, JR.
REGISTERED SURVEYOR NO. 7153

APPROVED
10-10-90

LEGEND

- PROPERTY LINE
- TRACT LINE
- - - - LOT LINE
- - - - EASEMENT AND WATER SUPPLY AGREEMENT LINE
- DEED BOOK 218 PAGE 75
- IRON PIN FOUND
- IRON PIN MONUMENT (TO BE SET)

NOTE: MONUMENTS SHALL BE SET IN ACCORDANCE WITH THE "MINIMUM STANDARDS FOR BOUNDARY SURVEYS IN THE STATE OF OHIO"

DATE 9/6/95
AUDITOR [Signature]

Rec'd. OCT 10 1990
Plat Vol. 13
Deed Vol. 248 Pg. 386

SEAL HOLMES COUNTY REGISTERED SURVEYOR ROBERT A. LINT, JR. 7153	DATE OCT. 90	HOLMES COUNTY RIGHT OF WAY PARCEL AT EAST HOLMES INDUSTRIAL PARK	DRWG. NO. 8752
	DRWN. BY L.D.C.		SCALE 1"=200'
	CH'KD. BY R.L.	W.E. QUICKSALL & ASSOCIATES CONSULTING ENGINEERS NEW PHILADELPHIA OHIO	SHEET 1/1

VOL 13 PAGE 120
PAGE 62

BEARINGS SHOWN HEREON ARE ORIENTED TO THE EASTERLY LINE OF THE 18.123 ACRE EXCEPTION DESCRIBED IN THE DEED RECORDS OF HOLMES COUNTY, BOOK 234 PAGE 953.

194341
REC'D AT 2:05 PM
SEP 06 95
FEE NO FEE
SEP 07 95