

**PROPOSED ANNEXATION
TO THE
VILLAGE OF MILLERSBURG**

**HARDY TOWNSHIP
N.E. QTR. SEC. 22
TWP. 9N & RANGE 7W
HOLMES COUNTY, OHIO**

TOTAL ACRES TO BE ANNEXED - 14.978

APPROVAL OF THE HOLMES COUNTY COMMISSIONERS
I HEREBY CERTIFY THAT THE HOLMES CO. COMMISSIONERS HAVE APPROVED THE DETACHMENT OF THIS TRACT OF LAND, AS SHOWN HEREON, FROM HOLMES COUNTY.
DATE 9-19-94, 1994 [Signature] CHAIRMAN, COUNTY COMMISSIONERS

APPROVAL OF THE MILLERSBURG PLANNING COMMISSION
I HEREBY CERTIFY THAT THIS PLAT FOR ANNEXATION WAS APPROVED BY THE MILLERSBURG PLANNING COMMISSION AT A MEETING HELD ON THE 5th DAY OF July, 1994.
[Signature] PRESIDENT, MILLERSBURG PLANNING COMMISSION

APPROVAL OF THE MILLERSBURG VILLAGE COUNCIL
I HEREBY CERTIFY THAT THIS PLAT FOR ANNEXATION WAS APPROVED BY THE VILLAGE COUNCIL OF MILLERSBURG, OHIO AT A MEETING HELD ON THE 27 DAY OF DECEMBER, 1994.
[Signature] VILLAGE CLERK

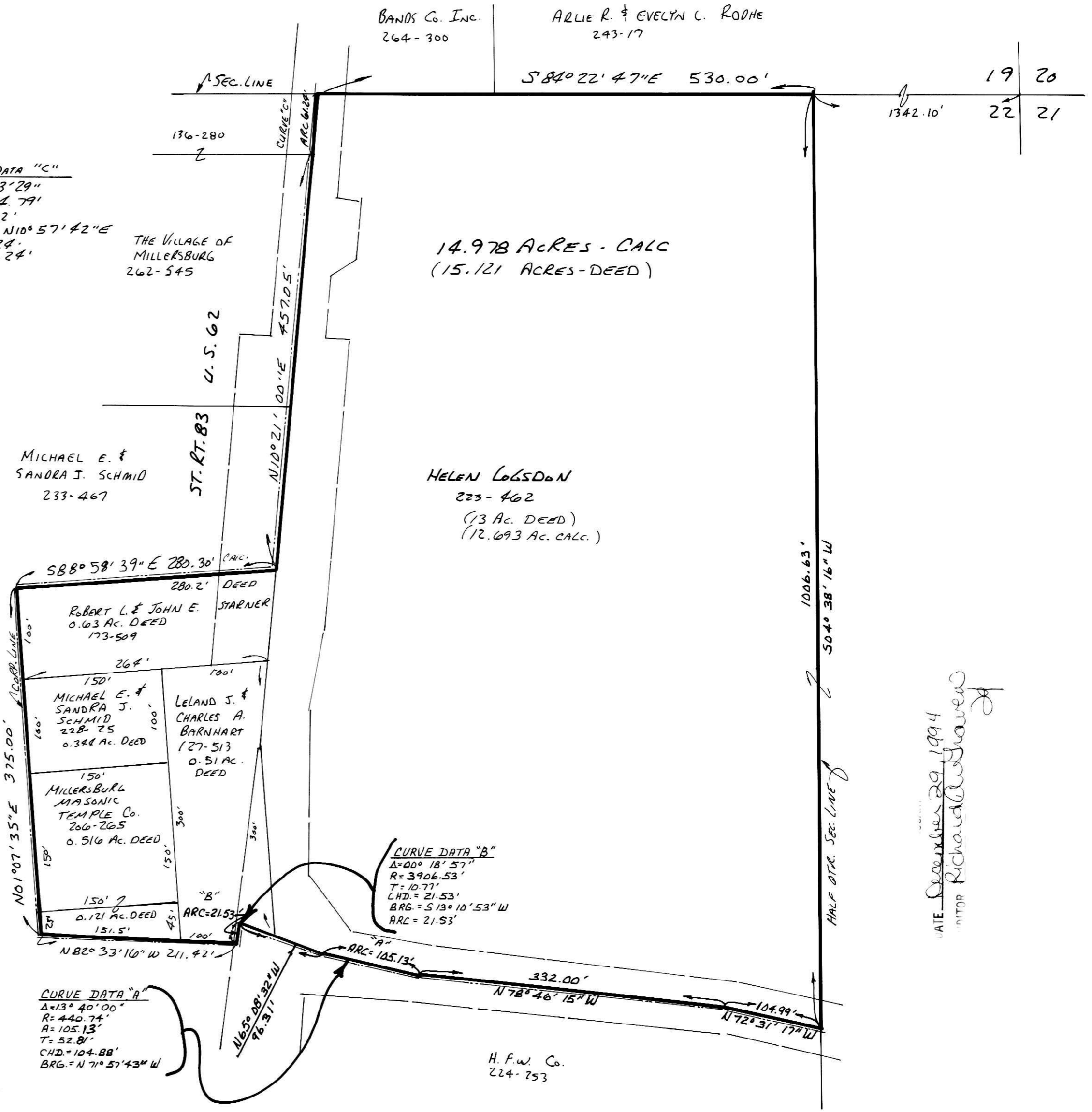
RECORDER
I HEREBY CERTIFY THAT THIS PLAT WAS RECEIVED FOR RECORD ON _____, 1994 AT _____, AND WAS RECORDED IN PLAT BOOK _____ ON PAGE _____, 1994.
FEE _____ RECORDER, HOLMES COUNTY, OHIO

SURVEYOR'S CERTIFICATION
I HEREBY CERTIFY THAT THIS PLAT WAS PREPARED ON BEHALF OF THE PROPERTY OWNERS FROM EXISTING SURVEYS AND DEEDS OF RECORD THIS 2nd DAY OF SEPT., 1994.
[Signature]
DONALD C. BAKER P.S. 6938
5958 T. R. 322
MILLERSBURG, OHIO 44654
PH: (216) 674-4788



REC'D AT 2:02 o'clock P.M. DEC 29 '94
RECORDED FEE 120.40 DEC 30 '94
Plat. VOL 15 PAGE 41 OF 201 p.124
Sally Miller RECORDER
V. G. M. B. G.

CURVE DATA "C"
Δ = 01° 13' 29"
R = 2804.79'
T = 30.62'
CH = 886 - N10° 57' 42" E
CH = 61.24'
ARC = 61.24'



CURVE DATA "B"
Δ = 00° 18' 57"
R = 3906.53'
T = 10.77'
CH = 21.53'
BRG. = S13° 10' 53" W
ARC = 21.53'

CURVE DATA "A"
Δ = 13° 40' 00"
R = 440.74'
A = 105.13°
T = 52.81'
CH = 104.88'
BRG. = N 71° 57' 43" W

DATE Dec 29, 1994
BY Richard C. Baker