

SAM D. & LOVINA YODER
250-49 1/15/91

Theron D. HASSEMAN
Doyle W. HASSEMAN
Rhea E. HASSEMAN

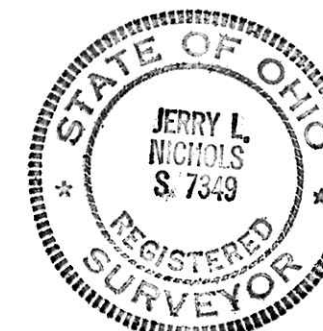
102.415 ACRES

part of

S.E. 1/4 SECTION 25
T-15 (PAINT) R-11
HOLMES Co. OHIO



BEARING BASIS:
NORTH LINE SW 1/4 SEC. 32 STARK Co.
FROM STARK Co. D.R. 756 Pg 618
BEARING S 84° 55' 13" E



I HEREBY CERTIFY THIS PLAT ACCURATELY
REPRESENTS A SURVEY MADE UNDER MY SUPERVISION
IN ACCORDANCE WITH THE MINIMUM STANDARDS FOR
BOUNDARY SURVEYS IN OHIO, PUBLISHED IN CHAPTER
4733-37 OF THE OHIO ADMINISTRATIVE CODE.

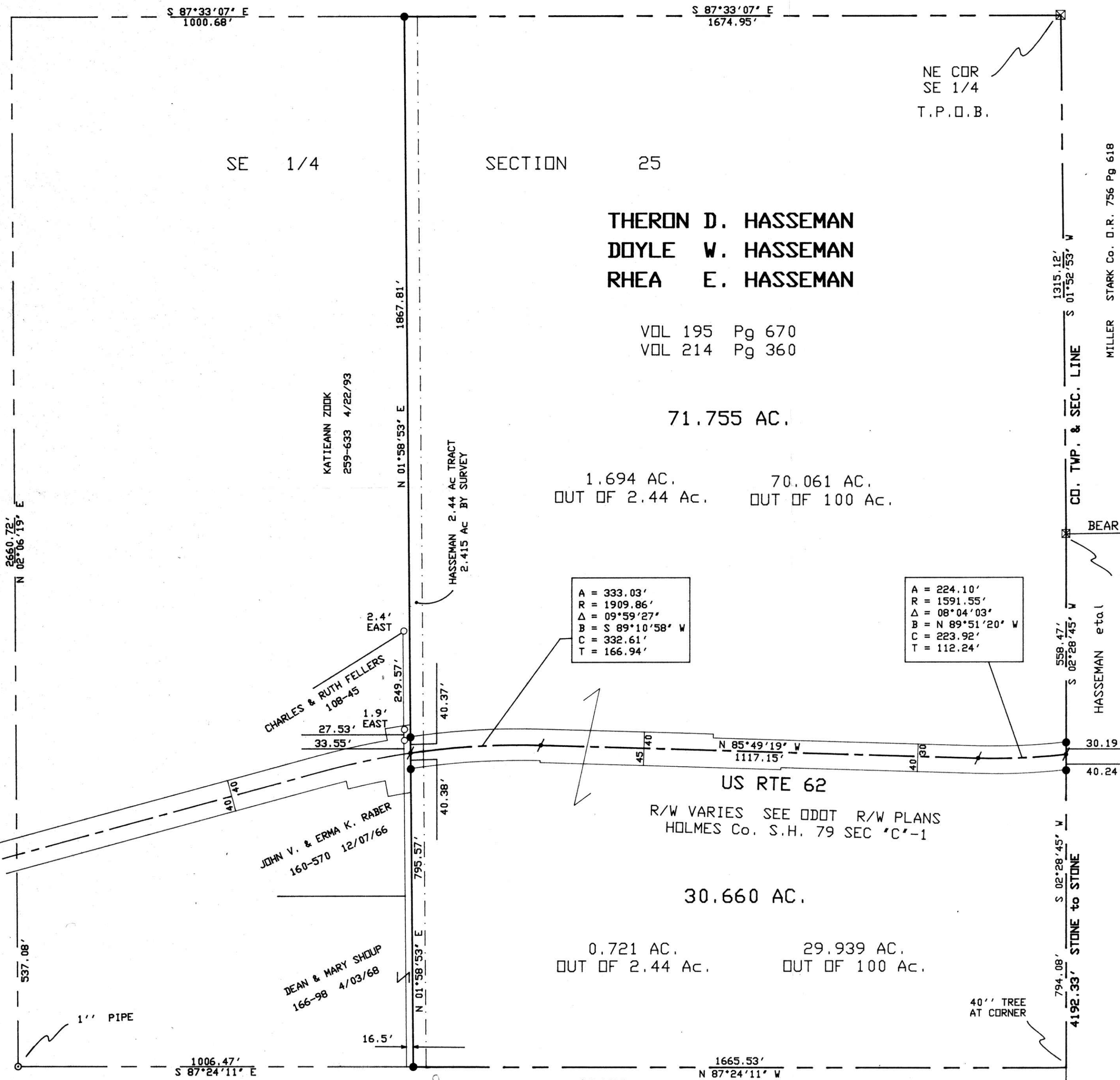
Jerry L. Nichols 6/24/94
JERRY L. NICHOLS DATE
REGISTERED PROFESSIONAL SURVEYOR # 7349

LEGEND

- ☒ STONE FD. & USED
 - 5/8" IRON BAR FD. & USED UNLESS NOTED
 - #5 REBAR W/ NICHOLS 7349 CAP SET
 - ⚡ P.K. NAIL SET
- JUNE 6, 1994
SCALE 1" = 200'
-

NICHOLS
FIELD
SERVICES INC.

526 4th STREET NW
CANTON, OHIO 44703
(216) 453-6688
FAX (216) 453-1764



REC'D 188238 RECORDED
AT 1:00 o'clock PM FEE \$21.60
JUN 24 '94 JUN 27 '94

VOL 15 PAGE 33
Deed vol. 264 pg 997
REC'D JUN 24 '94
RECORDED JUN 27 '94
AM Title

PLAT APPROVED
6/24/94