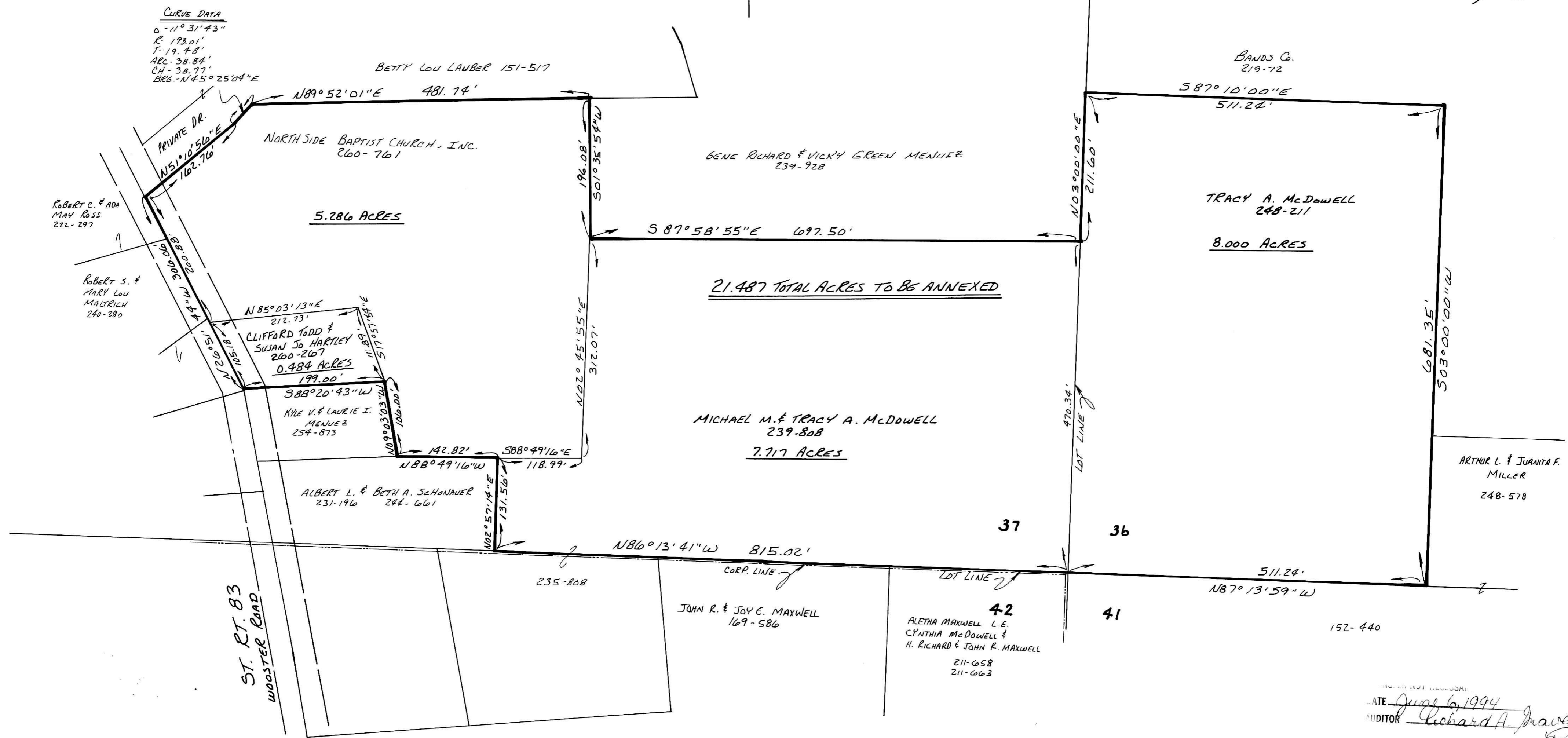
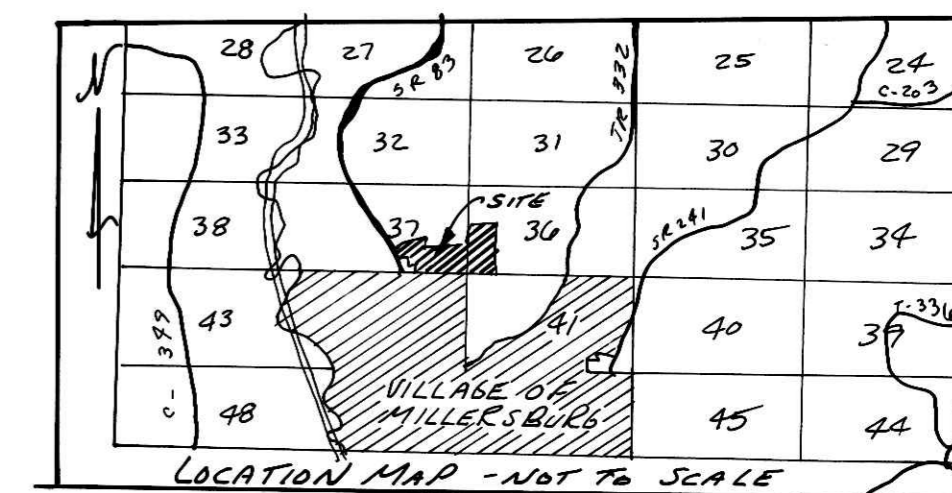
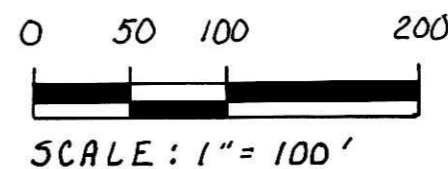


PROPOSED ANNEXATION TO THE VILLAGE OF MILLERSBURG

HARDY TOWNSHIP 1ST. QTR. LOTS 36 & 37 T-9N; R-7W HOLMES COUNTY, OHIO

TOTAL ACRES TO BE ANNEXED - 21.487 ACRES



CURVE DATA

D	-11° 31' 43"
R	193.01'
T	19.48'
ARC	38.84'
CH	38.77'
BEARS	N 45° 25' 04" E

APPROVED HOLMES COUNTY COMMISSIONERS
 I HEREBY CERTIFY THAT THE HOLMES COUNTY COMMISSIONERS HAVE APPROVED THE DETACHMENT OF THIS TRACT OF LAND AS SHOWN HEREON, FROM HOLMES COUNTY.
 OCT. 25 19 93
 DATE
 CHAIRMAN, COUNTY COMMISSIONERS

APPROVED MILLERSBURG VILLAGE COUNCIL
 I HEREBY CERTIFY THAT THIS PLAT FOR ANNEXATION WAS APPROVED BY THE VILLAGE COUNCIL OF MILLERSBURG, OHIO AT A MEETING HELD ON THE 10 DAY OF JANUARY 19 94
 BY VILLAGE CLERK RESOLUTION 94-02

SURVEYORS CERTIFICATION
 I HEREBY CERTIFY THAT THIS PLAT WAS PREPARED ON BEHALF OF THE PROPERTY OWNERS FROM EXISTING SURVEYS AND DEEDS OF RECORD THIS 16th DAY OF JULY 1993.

APPROVED MILLERSBURG PLANNING COMMISSION
 I HEREBY CERTIFY THAT THIS PLAT FOR ANNEXATION WAS APPROVED BY THE MILLERSBURG PLANNING COMMISSION AT A MEETING HELD ON THE 18th DAY OF NOVEMBER 19 93
 BY PRESIDENT, MILLERSBURG PLANNING COMMISSION

RECORDER
 I HEREBY CERTIFY THAT THIS PLAT WAS RECEIVED FOR RECORD ON JUN 06 1994 AT 1:50 P.M.
 AND WAS RECORDED IN PLAT BOOK 15 ON PAGE 30
 ON JUN 07 1994
 FEE 21.60
 BY RECORDER, HOLMES COUNTY, OHIO

BY DONALD C. BAKER P.S. 6938
 5958 T.R. 322
 MILLERSBURG, OHIO 44654
 PH: (216) 674-4788
 JULY 13, 1993



AUDITOR
 DATE June 6, 1994
 AUDITOR Richard A. Inaver