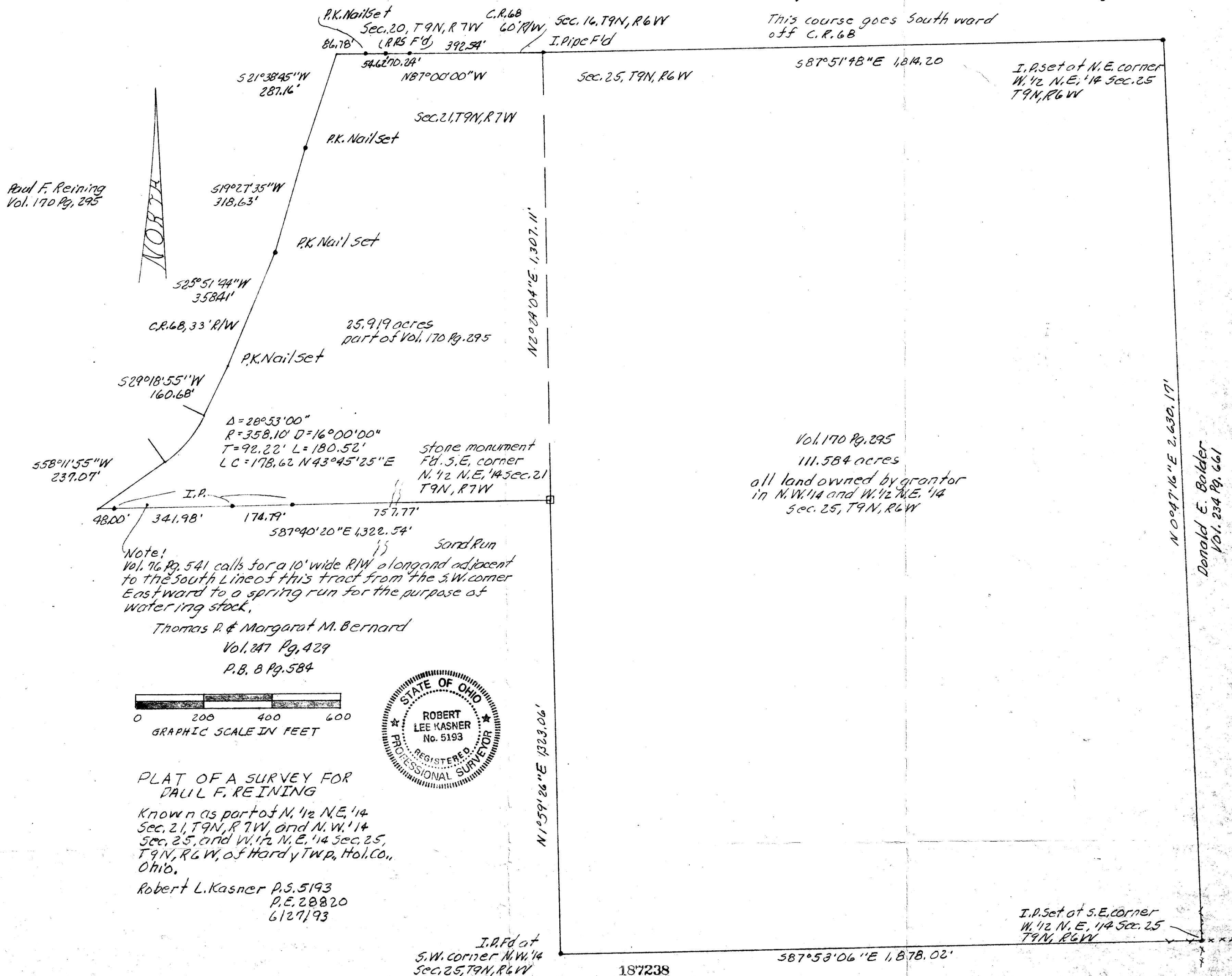


T. Marzetti Company Paul F. Reining  
Vol. 213 Pg. 500 Vol. 171 Pg. 421  
P.B. 9 Pg. 103 184 675

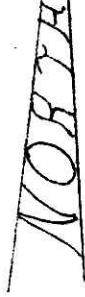
Anna Mary Tope  
Vol. 223 Pg. 432

Donald E. Balder  
Vol. 234 Pg. 665

This course goes South ward  
off C.R. 6B



Paul F. Reining  
Vol. 170 Pg. 295



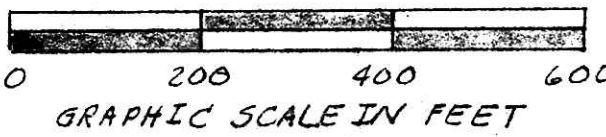
25.919 acres  
part of Vol. 170 Pg. 295

stone monument  
Fd. S.E. corner  
N. 1/2 N.E. 1/4 Sec. 21  
T9N, R7W

Vol. 170 Pg. 295  
111.584 acres  
all land owned by grantor  
in N.W. 1/4 and W. 1/2 N.E. 1/4  
Sec. 25, T9N, R6W

Note:  
Vol. 76 Pg. 541 calls for a 10' wide R/W along and adjacent  
to the south line of this tract from the S.W. corner  
Eastward to a spring run for the purpose of  
watering stock.

Thomas P. & Margaret M. Bernard  
Vol. 227 Pg. 429  
P.B. 8 Pg. 584



PLAT OF A SURVEY FOR PAUL F. REINING

Known as part of N. 1/2 N.E. 1/4  
Sec. 21, T9N, R7W, and N.W. 1/4  
Sec. 25, and W. 1/2 N.E. 1/4 Sec. 25,  
T9N, R6W, of Hardy Twp., Hol. Co.,  
Ohio.

Robert L. Kasner P.S. 5193  
P.E. 20820  
6127193

I.P. Fd at  
S.W. corner N.W. 1/4  
Sec. 25, T9N, R6W

I.P. Set at S.E. corner  
W. 1/2 N.E. 1/4 Sec. 25  
T9N, R6W

INDEXED

REC'D AT 12:50'clock PM APR 20 '94  
RECORDED FEE \$20.00 APR 21 '94

Rex A. & Kristin L. Wheeler  
Vol. 232 Pg. 687

Hubert H. & Frances W. Hummel  
Vol. 225 Pg. 607

Plat VOL 15 PAGE 27 Deed vol. 244 Pg. 142

PLAT APPROVED 4-8-94