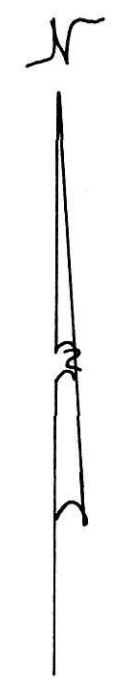


VOL 15 PAGE 18

KILLBUCK TOWNSHIP  
S.W. & S.E. QTRS. SECTION 16  
T-8N; R-7W  
S.E. QTR. SECTION 20  
T-8N; R-8W  
HOLMES COUNTY, OHIO



- SCALE: 1" = 300'
- ▲ R.R. SPIKE FOUND
  - IRON PIN FOUND
  - P.K. NAIL SET
  - 3/8" REBAR WITH I.D. CAP SET.  
I.D. CAP MARKED "BAKER 6938."

CURVE DATA

- Δ - 14° 38' 15"
- R - 910.87'
- T - 116.99'
- CH - 232.07'
- BRG - N13° 13' 03" E
- ARC - 232.70'

REFERENCES:

- DEED VOL. 169 PAGE 535
- DEED VOL. 230 PAGE 507
- DEED VOL. 230 PAGE 510
- DEED VOL. 217 PAGE 886
- DEED VOL. 177 PAGE 240
- DEED VOL. 228 PAGE 725
- DEED VOL. 260 PAGE 64
- DEED VOL. 103 PAGE 248
- DEED VOL. 159 PAGE 548
- BEARINGS FROM DEED VOL. 260 PAGE 64

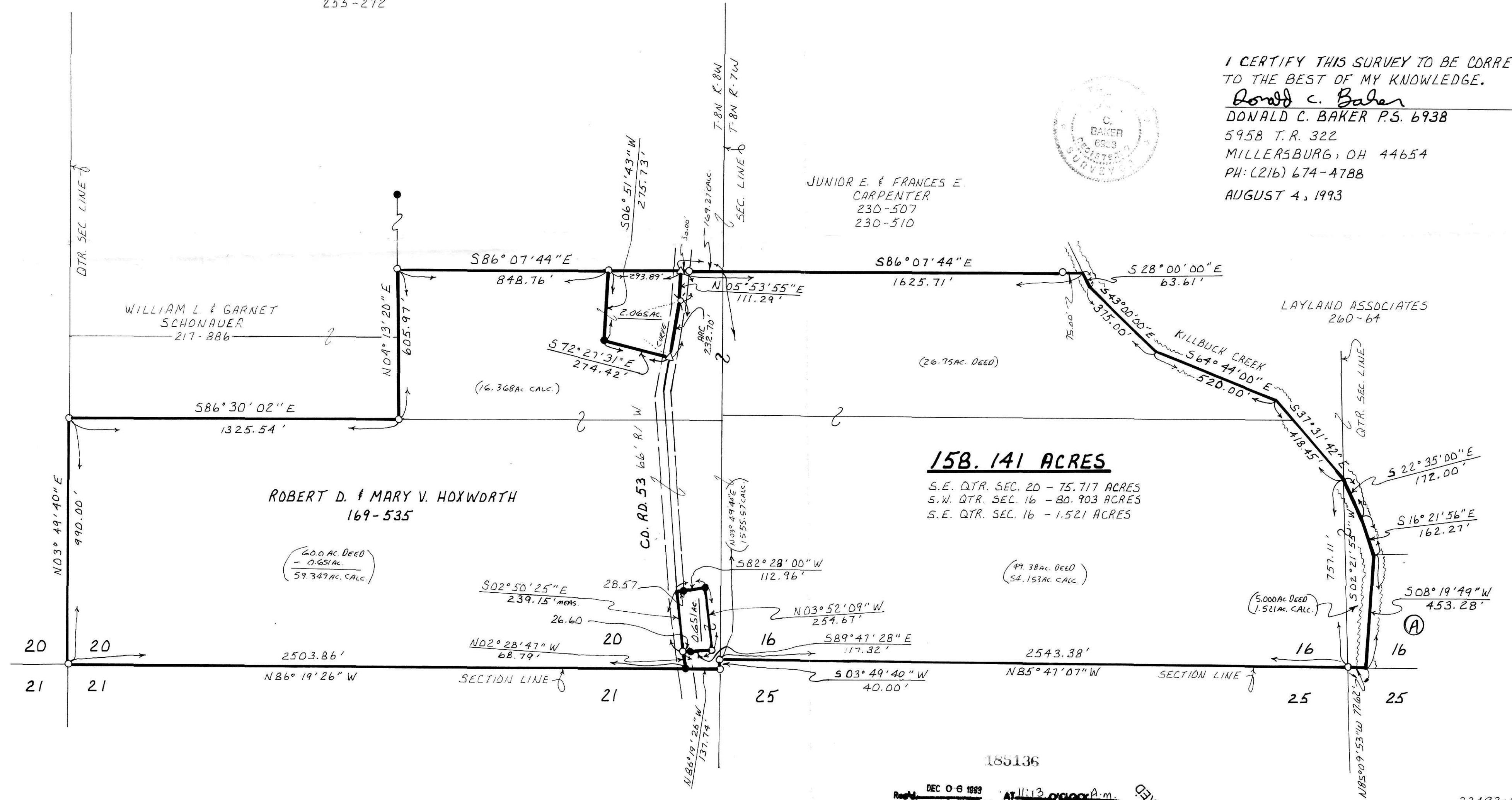
Ⓐ NORMAN R. JR. & MARY LOU CROWE  
255-272

JUNIOR E. & FRANCES E.  
CARPENTER  
230-507  
230-510



I CERTIFY THIS SURVEY TO BE CORRECT  
TO THE BEST OF MY KNOWLEDGE.

Donald C. Baker  
DONALD C. BAKER P.S. 6938  
5958 T.R. 322  
MILLERSBURG, OH 44654  
PH: (216) 674-4788  
AUGUST 4, 1993



**158.141 ACRES**

S.E. QTR. SEC. 20 - 75.717 ACRES  
S.W. QTR. SEC. 16 - 80.903 ACRES  
S.E. QTR. SEC. 16 - 1.521 ACRES

DEC 06 1993 AT 11:13 O'Clock A.M.  
DEC 07 1993  
Deed vol. 262 pg 588  
INDEXED  
D. Mathie