

BEARINGS ESTABLISHED FROM STATE HWY. PLANS: HOL-62 (10.00-14.01)

CURVE DATA

CURVE:	(A)	(B)
RADIUS	3013.58'	2914.57'
TANGENT	467.67'	441.51'
LENGTH	927.94'	876.36'
DELTA	17°38'33"	17°13'40"
DEGREE	1°54'05"	1°57'57"
CHORD	924.28'	873.06'
CH. BRG.:	N 14°56'06"W	S 15°08'32"E

REFERENCE DOCUMENTS:

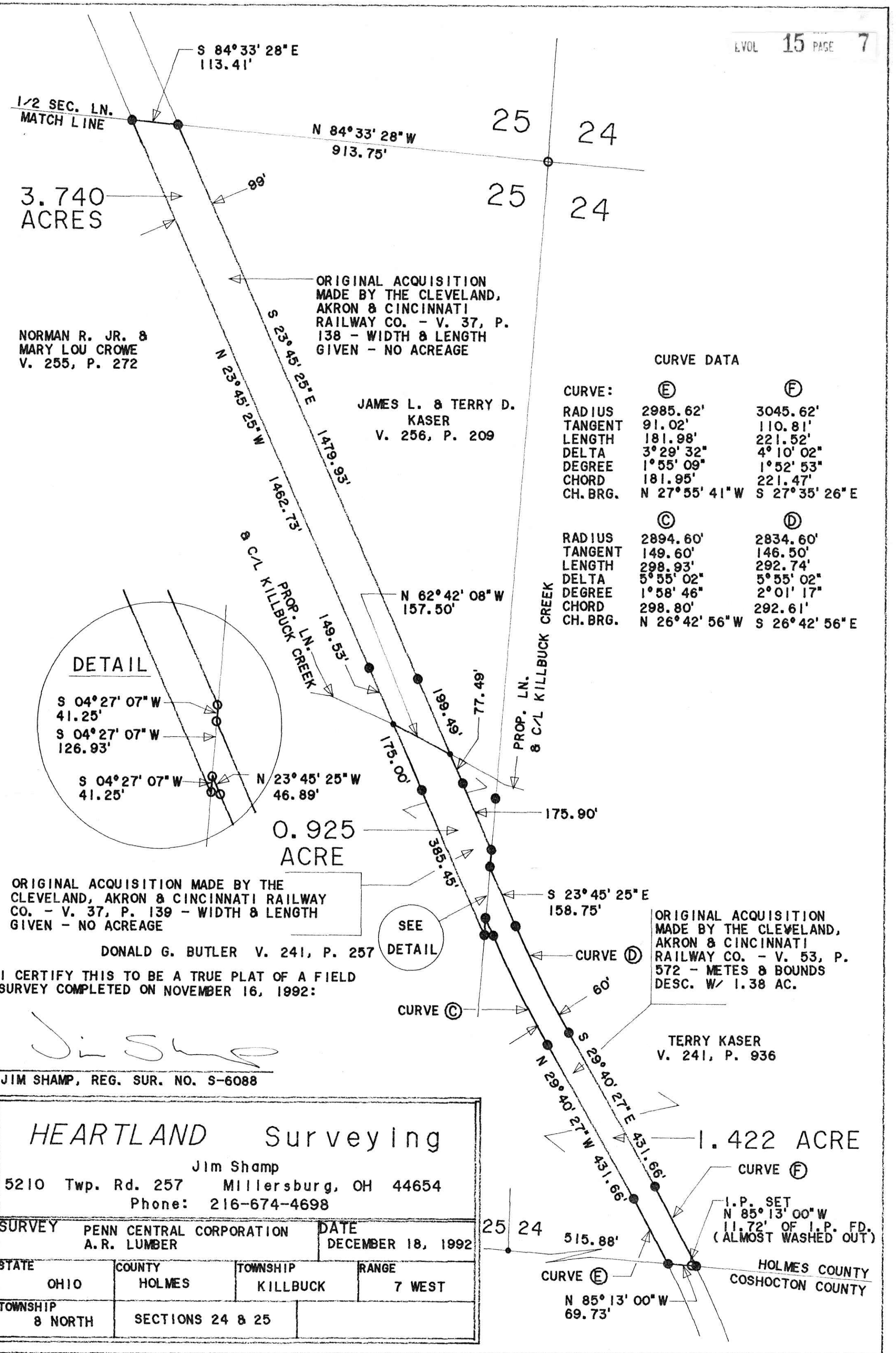
TAX MAPS	DEEDS AS SHOWN
PLATS:	VOLUME PAGE
	12 132
	12 988
	13 32
	13 153

ORIGINAL ACQUISITION MADE BY THE CLEVELAND, AKRON & CINCINNATI RAILWAY CO. - V. 37, P. 137 - WIDTH & LENGTH GIVEN - NO ACREAGE

- LEGEND:
- △ = P.K. NAIL FOUND
 - = POINT OF DEPARTURE
 - = I.P. FOUND
 - = I.P. SET (5/8" X 30" REBAR W/PLASTIC CAPS STAMPED "JIM SHAMP 6088")



183638
Rec'd AUG 27 1993 AT 3:08 O'CLOCK P.M.
Recorded AUG 30 1993 Holmes Co. Ohio Plat # 200
Plat Vol 15 Page 2 Recorder Holly Miller
Deed vol 261 pg 305



CURVE DATA

CURVE:	(E)	(F)
RADIUS	2985.62'	3045.62'
TANGENT	91.02'	110.81'
LENGTH	181.98'	221.52'
DELTA	3°29'32"	4°10'02"
DEGREE	1°55'09"	1°52'53"
CHORD	181.95'	221.47'
CH. BRG.	N 27°55'41"W	S 27°35'26"E

CURVE:	(C)	(D)
RADIUS	2894.60'	2834.60'
TANGENT	149.60'	146.50'
LENGTH	298.93'	292.74'
DELTA	5°55'02"	5°55'02"
DEGREE	1°58'46"	2°01'17"
CHORD	298.80'	292.61'
CH. BRG.	N 26°42'56"W	S 26°42'56"E

ORIGINAL ACQUISITION MADE BY THE CLEVELAND, AKRON & CINCINNATI RAILWAY CO. - V. 37, P. 139 - WIDTH & LENGTH GIVEN - NO ACREAGE
DONALD G. BUTLER V. 241, P. 257

I CERTIFY THIS TO BE A TRUE PLAT OF A FIELD SURVEY COMPLETED ON NOVEMBER 16, 1992:

Jim Shamp
JIM SHAMP, REG. SUR. NO. S-6088

HEARTLAND Surveying
Jim Shamp
5210 Twp. Rd. 257 Millersburg, OH 44654
Phone: 216-674-4698

SURVEY		PENN CENTRAL CORPORATION		DATE	
		A. R. LUMBER		DECEMBER 18, 1992	
STATE	COUNTY	TOWNSHIP	RANGE		
OHIO	HOLMES	KILLBUCK	7 WEST		
TOWNSHIP	SECTIONS 24 & 25				
8 NORTH					