

PRAIRIE TOWNSHIP S.W. QTR., SECTION 8 T-13N; R-13W HOLMES COUNTY, OHIO



SCALE: 1" = 200'

- IRON PIN FOUND
- △ RR. SPIKE SET
- 5/8" REBAR WITH I.D. CAP SET
- I.D. CAP MARKED "BAKER 6938"

REFERENCES:

- DEED VOL. 193 PAGE 332
- DEED VOL. 231 PAGE 413
- DEED VOL. 196 PAGE 616
- DEED VOL. 164 PAGE 265
- DEED VOL. 209 PAGE 788



I CERTIFY THIS SURVEY TO BE
CORRECT TO THE BEST OF MY
KNOWLEDGE.

Donald C. Baker

DONALD C. BAKER P.S. 6938

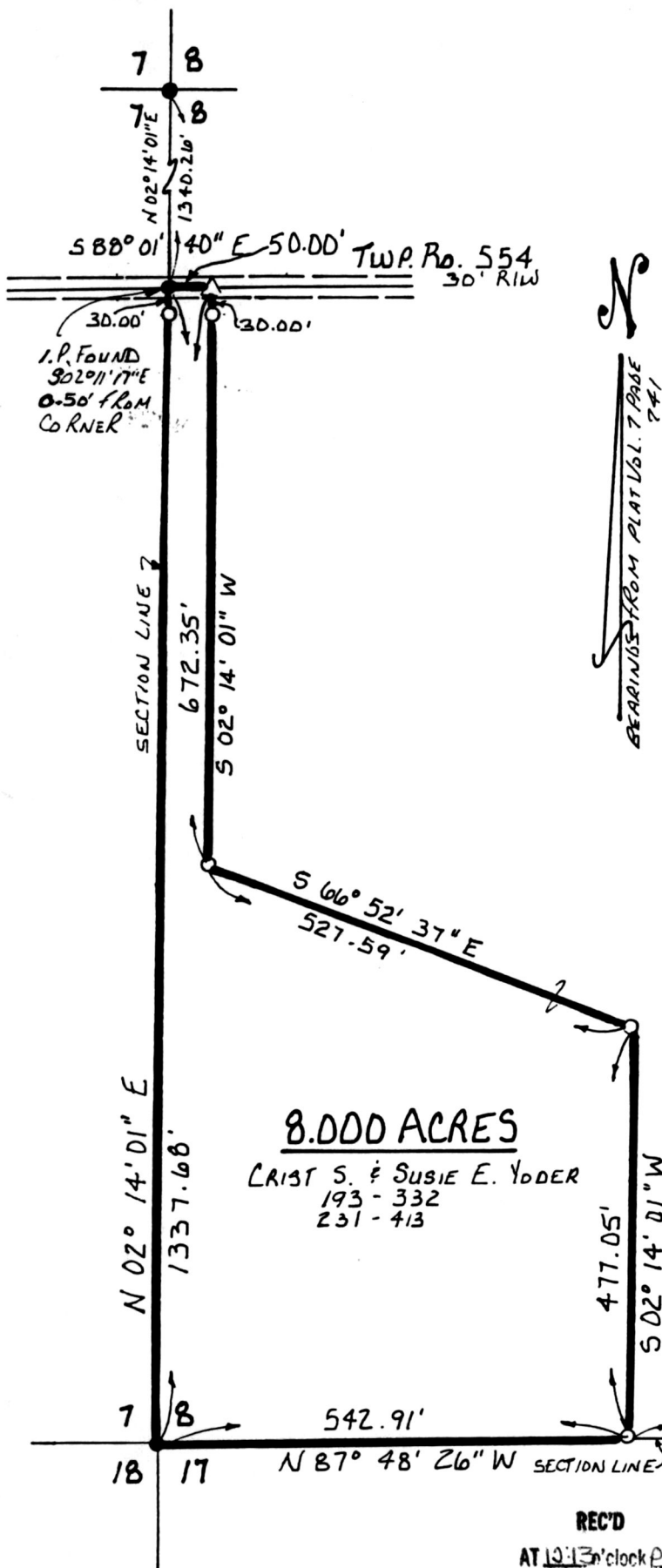
5958 T.R. 322

MILLERSBURG, OHIO 44654

PH: (216) 674-4788

NOVEMBER 21, 1995

64095 FSM



8.000 ACRES

CRIST S. & SUSIE E. YODER
193 - 332
231 - 413

REC'D
AT 10:13⁰⁰ clock PM

DEC 08 '95

RECORDED
FEE \$20.00

DEC 11 '95

PLAT APPROVED

12/8/95

Plat
VOL 14 PAGE 970
04 271 pg 200
Sally Miller RECORDER hand

INDEXED