

SCALE: 1" = 100'

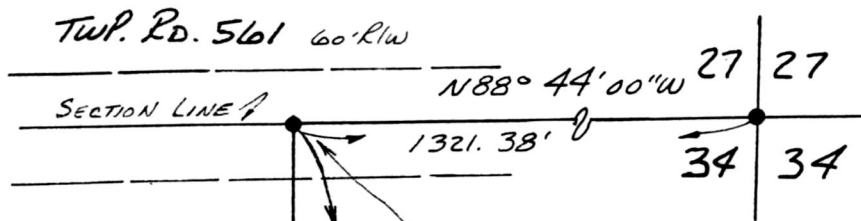
- IRON PIN FOUND
- 5/8" RE BAR WITH I.D. CAP SET (I.D. CAP MARKED "BAKER 6938")

REFERENCES:

- DEED VOL. 223 PAGE 477
- " " 233 " 654
- " " 228 " 996
- " " 238 " 529
- PLAT VOL. 10 PAGE 485
- " " 10 " 927

BEARINGS FROM PLAT VOL. 10 PAGE 485

PRAIRIE TOWNSHIP
 N.W. QTR. SECTION N 34
 T-14N; R-13W
 HOLMES COUNTY, OHIO



BEN RAY & ALMA A. HERSHBERGER 228-996

S 88° 44' 00" E 208.70'

1.269
ACRES

208.70'
N 88° 44' 00" W

PAUL H. & ALTA A. STEJTMAN 233-654

1 P.F. 1.40 NORTH OF LINE SEE PLAT VOL. 10 PAGE 485

ATLEE D. & ADA A. YODER 147-471 223-477

N 00° 05' 52" E 265.00'



I CERTIFY THIS SURVEY TO BE CORRECT TO THE BEST OF MY KNOWLEDGE.

Donald C. Baker
 DONALD C. BAKER P. S. 6938
 5958 T.R. 322
 MILLERSBURG, OHIO 44654
 PH. (216) 674-4788
 MAY 12, 1995

21395-MLS

950121

APPROVED FOR TRANSFER ONLY
 NO SUBDIVISION PLAT REQUIRED
 (O.R.C. 711.001 & 711.131)
 Lot(s) not for building unless
 approved by Board of Health.
 HOLMES CO. PLANNING COMM.

By TRM Date 6-29-95
 193291

REC'D
 AT 2:25 o'clock P.M.

JUL 05 '95

Plat.
 VOL 14 PAGE 844 Sally Miller RECORDER
 Wood Vol 269 Page 282 S.S.

RECORDED
 FEE \$20.00

JUL 06 '95

PLAT APPROVED

6/30/95-B