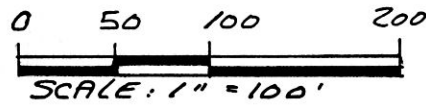


LOCATION MAP (NOT TO SCALE)

④, ⑤, ⑥ P. & D. ENTERPRISES 237-955

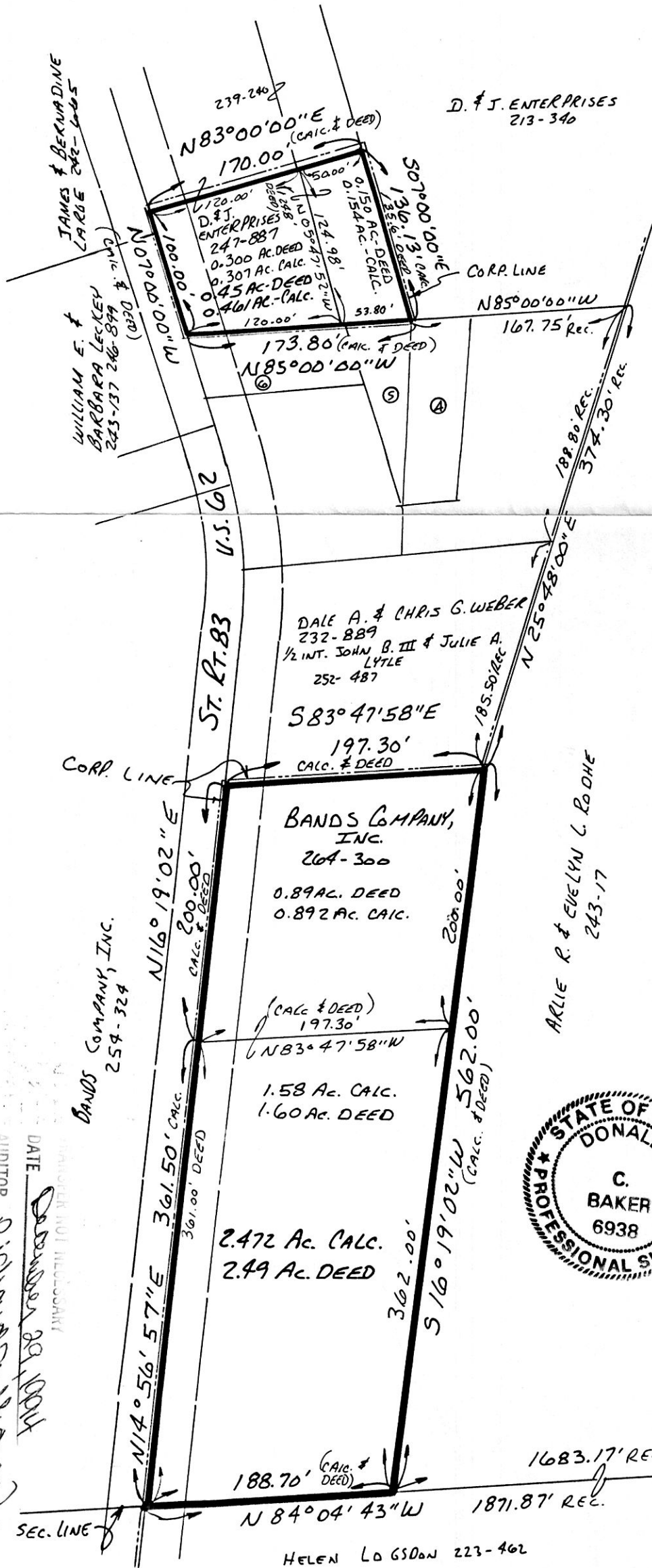
PROPOSED ANNEXATION TO THE VILLAGE OF MILLERSBURG

HARDY TOWNSHIP
 S.E. QTR. SECTION 19
 T-9N R-7W
 HOLMES COUNTY, OHIO



TOTAL ACRES TO BE ANNEXED - 2.933 CALC.
 (2.940 Ac. DEED)

BEARINGS FROM DEED VOL. 247 PG. 887



APPROVAL OF THE HOLMES COUNTY COMMISSIONERS
 I HEREBY CERTIFY THAT THE HOLMES COUNTY COMMISSIONERS HAVE APPROVED THE DETACHMENT OF THIS TRACT OF LAND, AS SHOWN HEREON, FROM HOLMES COUNTY.

9-19-94, 1994 Leah W. Miller
 DATE CHAIRMAN C. COMMISSIONERS

APPROVAL OF THE MILLERSBURG PLANNING COMMISSION
 I HEREBY CERTIFY THAT THIS PLAT FOR ANNEXATION WAS APPROVED BY THE MILLERSBURG PLANNING COMMISSION AT A MEETING HELD ON THE 5th DAY OF July, 1994.

William J. Powell
 PRESIDENT, MILLERSBURG PLANNING COMMISSION

APPROVAL OF THE MILLERSBURG VILLAGE COUNCIL

I HEREBY CERTIFY THAT THIS PLAT FOR ANNEXATION WAS APPROVED BY THE VILLAGE COUNCIL OF MILLERSBURG, OHIO AT A MEETING HELD ON THE 27 DAY OF DEC, 1994.

Karen Shelby
 VILLAGE CLERK

RECORDER

I HEREBY CERTIFY THAT THIS PLAT WAS RECEIVED FOR RECORD ON _____, 1994 AT _____ AND WAS RECORDED IN PLAT BOOK _____ ON PAGE _____ ON _____, 1994. FEE _____.

RECORDER, HOLMES Co., OHIO

SURVEYORS CERTIFICATION

I HEREBY CERTIFY THAT THIS PLAT WAS PREPARED ON BEHALF OF THE PROPERTY OWNERS FROM EXISTING SURVEYS AND DEEDS OF RECORD THIS 2ND DAY OF SEPT., 1994.

Donald C. Baker
 DONALD C. BAKER P.S. 6938
 5958 T.R. 322 44654
 MILLERSBURG OHIO
 PH. (216) 674-4788



190690

INDEXED

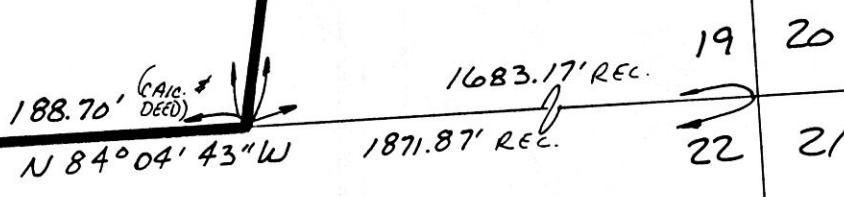
REC'D
 AT 3:02 o'clock P.M.

RECORDED
 FEE \$20.00

DEC 29 '94

DEC 30 '94

Plat
 VOL 14 PAGE 690
 BY 267 09 124 Sally Miller RECORDER
 Vjmg



HELEN LO GSDON 223-462

PLAT APPROVED
 9-16-94 Kj