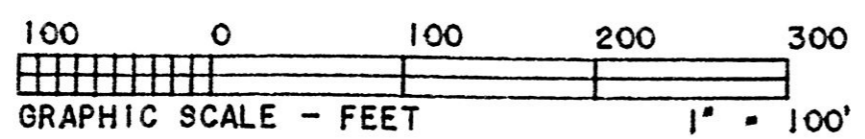
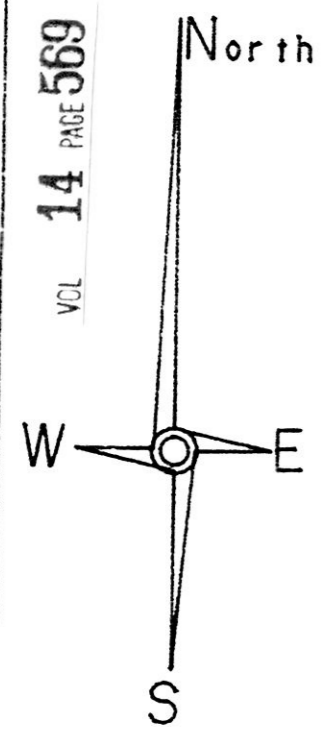


VOL 14 PAGE 569

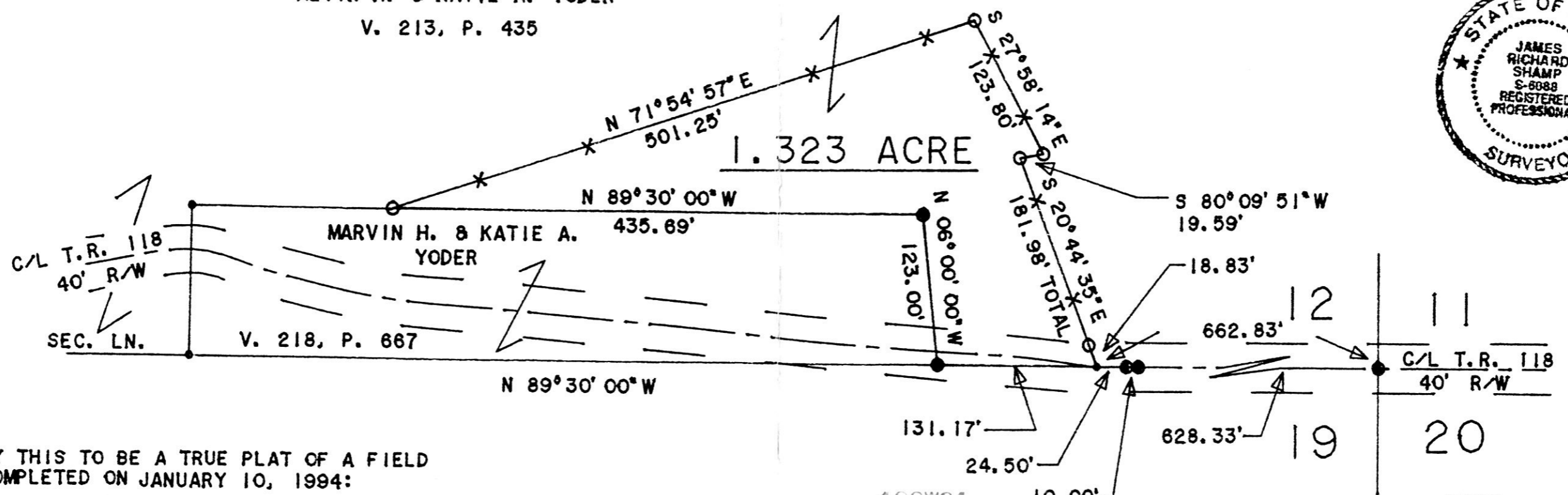


REFERENCE DOCUMENTS:

TAX MAP
DEEDS AS SHOWN
PLATS: 8-149, 5-120, 12-149 & A SURVEY FOR AMMON MILLER BY JIM SHAMP ON 9/29/92.

* BEARINGS EST. FROM PLAT 8-149.

ALVIN H. & KATIE A. YODER
V. 213, P. 435



- LEGEND:
- - IRON CORNER FOUND
 - - 5/8" X 30" RE-BAR W/I.D. CAP SET
 - - POINT-OF-DEPARTURE
 - X— - FENCE LINE



I CERTIFY THIS TO BE A TRUE PLAT OF A FIELD SURVEY COMPLETED ON JANUARY 10, 1994:

JIM SHAMP, REG. SUR. NO. S-6088

REC'D 188791
AT 1:47 o'clock PM
AUG 03 '94
RECORDED
FEE \$20.00
AUG 04 '94

APPROVED
No Plat Required
Holmes Co. Plan. Comm.
By RM
Date 8-2-94

Plat VOL 14 PAGE 569 Sally Miller RECORDER
Deed vol. 265 pg 421

PLAT APPROVED
8/2/94