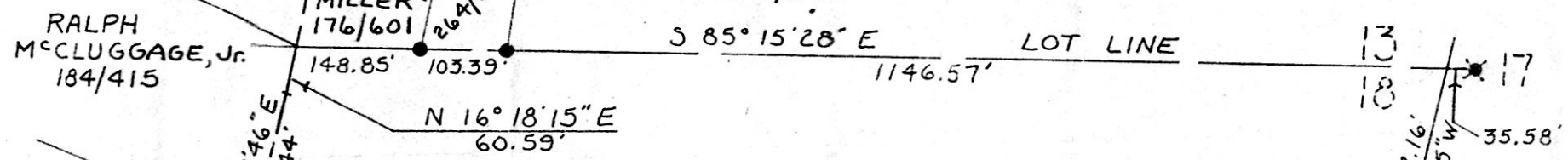


#20.00 pd.

BYRON W. KENDALL 188410
248/553



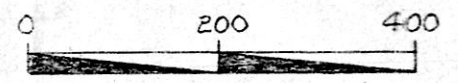
Research Data:
 Deeds: 184/412 184/415 176/601
 248/553 257/417 232/395
 147/381 184/417 264/297
 Survey by D.S. Baker, June 1992

- ✱ = Set 3/4" X 30" rebar with aluminum cap.
- = Recovered 5/8" rebar with plastic cap.
- = Recovered 3/4" rebar

Boundary Survey
 for
 Menez Brothers
 in
 Lot 18
 First Quarter
 Range 7W, Township 9N
 Hardy Township
 Holmes County
 Ohio

Scale: 1" = 200' May 19, 1994

41.963 Ac.



188410

RECD AT 3:58 o'clock P.M.
 JUL 06 '94
 Plat.
 VOL 14 PAGE 547
 Deed Vol. 265 pg 114
 RECORDED FEE #20.00
 JUL 07 '94
 RECORDER S.S.

INDEXED

P.O.B. S.E. Cor. LOT 18

JOHN A. & PHYLLIS M^CCLUGGAGE 147/381 184/417
 N 84° 56' 52" W 158.53'
 N 5° 00' 12" E 209.70'

LOT 1042.62' LINE
 N 84° 21' 56" W

CONCRETE RENTAL & SUPPLY
 232/395

Prepared By
AMERICAN PRECISION SURVEYING
 450 S. 4th St. (614) 622-2783
 COSHOCTON, OHIO 43812

LOT LINE
 S 27° 49' 19" W 606.23'
 KURT A. & STACIE A. M^CDOWELL 257/417

S 55° 19' 20" W 58.75'
 S 71° 30' 50" W 112.09'
 S 53° 53' 00" W 173.15'

EAST BANK OLD CHANNEL KILLBUCK CREEK



Bruce D. Eckelberry
 R.P.S. #7103

PLAT APPROVED
 6/29/94

VOL 14 PAGE 547