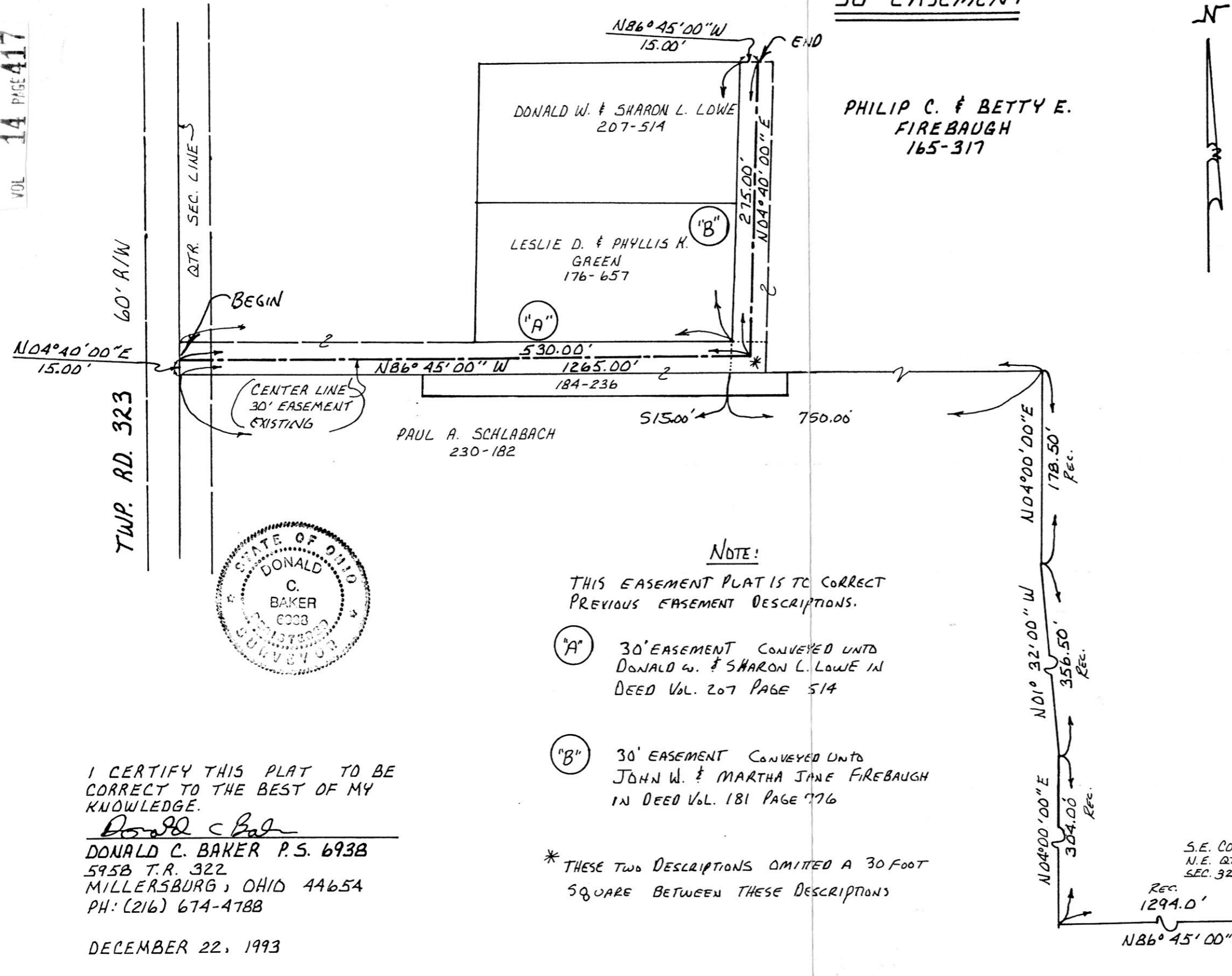
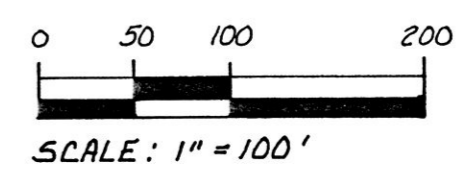


185912

30' EASEMENT



PRAIRIE TOWNSHIP
 N.E. QTR. SECTION 32
 T-14N ; R-13W
 HOLMES COUNTY, OHIO



NOTE:
 BEARINGS & DISTANCES ARE ALL OF RECORD - NO FIELD MEASUREMENTS MADE

REFERENCES:

- DEED VOL. 165 PAGE 317
- DEED VOL. 184 PAGE 236
- DEED VOL. 176 PAGE 657
- DEED VOL. 207 PAGE 514
- DEED VOL. 230 PAGE 182
- PLAT VOL. 4 PAGE 58
- PLAT VOL. 5 PAGE 78
- PLAT VOL. 7 PAGE 53

BEARINGS FROM DEED VOL. 207 PAGE 514



NOTE:

THIS EASEMENT PLAT IS TO CORRECT PREVIOUS EASEMENT DESCRIPTIONS.

- "A" 30' EASEMENT CONVEYED UNTO DONALD W. & SHARON L. LOWE IN DEED VOL. 207 PAGE 514
- "B" 30' EASEMENT CONVEYED UNTO JOHN W. & MARTHA JANE FIREBAUGH IN DEED VOL. 181 PAGE 76

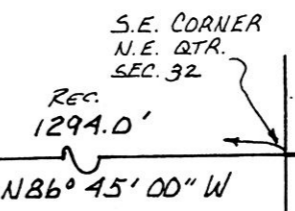
* THESE TWO DESCRIPTIONS OMITTED A 30 FOOT SQUARE BETWEEN THESE DESCRIPTIONS

I CERTIFY THIS PLAT TO BE CORRECT TO THE BEST OF MY KNOWLEDGE.

Donald C Baker
 DONALD C. BAKER P.S. 6938
 595B T.R. 322
 MILLERSBURG, OHIO 44654
 PH: (216) 674-4788

DECEMBER 22, 1993

72093-BEC



185912

INDEXED

Rec'd JAN 19 1994 AT 12:06 O'CLOCK P.M.
 Recorded JAN 20 1994 Holmes Co. Ohio Plat #20.00
 Plat Vol. 14 Pg. 417 Deed vol. 263 pg. 165