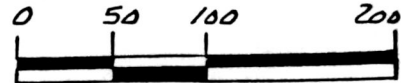


KILLBUCK TOWNSHIP
S.W. QTR. SECTION 9
T-8N R-8W
HOLMES COUNTY, OHIO



- SCALE: 1" = 100'
- ▲ R. R. SPIKE FOUND
 - IRON PIN FOUND
 - 5/8" REBAR WITH I.D. CAP SET
I.D. CAP MARKED "BAKER 6938"



BEARINGS FROM PLAT VOL. 12 PAGE 420

PLAT OF CORRECTION

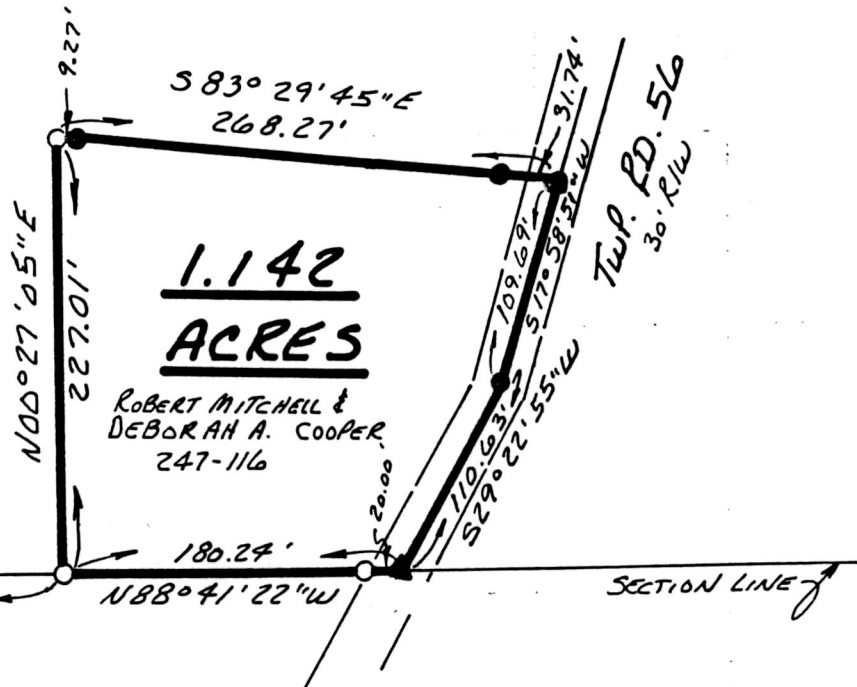
TO CORRECT PLAT VOL. 12 PAGE 420

HELEN RUSSELL
229-378

NOTE:
THERE IS A BEND AT THE
N.W. COR. SECTION 12

588° 41' 22" E
465.95'

N.W. CORNER
N.W. QTR.
SECTION 12



1.142
ACRES

ROBERT MITCHELL &
DEBORAH A. COOPER
247-116

TWP. RD. 56
30' R/W



I CERTIFY THIS SURVEY TO BE CORRECT
TO THE BEST OF MY KNOWLEDGE.

Donald C. Baker

DONALD C. BAKER P.S. 6938
5958 T.R. 322
MILLERSBURG, OHIO 44654
PH. (216) 674-4788
AUGUST 24, 1993

183967

Rec'd. SEP 20 1993

AT 3:46 O'CLOCK P.M.

Recorded SEP 21 1993

Holmes Co. Ohio Fee #20.00

Plat Vol. 14
Deed vol. 2141 pg 657

Pg. 306 Recorder Sally Miller

INDEXED

42793-MLS

PLAT APPROVED
9-17-93

Laurel