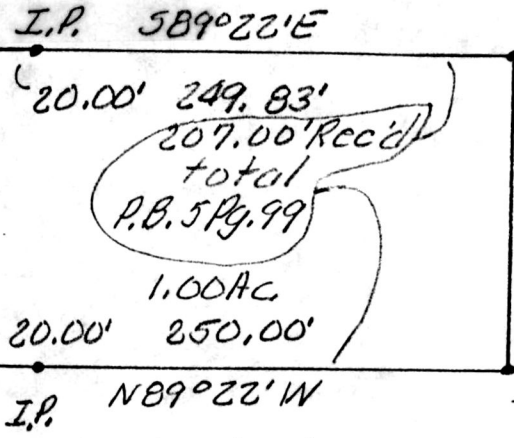


S.W. 1/4 N.E. 1/4 Sec. 4, T14N R12W

Aaron A. & Anna Weaver
Vol. 189 Pg. 737

N100°E T.R. 611 60' RW
1128.00' N100°E 161.33'



I.P. (A)
51°00'00" W
161.33'

Note: This plat and description are a corrective set to one prepared in 1971 that was intended to convey a 1.00 acre tract. It is believed by the hereon signed author that was the intent. I.P. A & B were found in 1974 to be at their indicated locations, not 207.00' from the West Line of the S.W. 1/4 of the N.E. 1/4 Sec. 4, T14N, R12W.

Richard E. & Louise A.
Cri'low Vol. 238 Pg. 399
S.W. corner N.E. 1/4 Sec. 4

Known as part of the S.W. 1/4 of N.E. 1/4 of Sec. 4, T14N, R12W, of Salt Creek Twp., Hol. Co., Ohio and being a corrective description of Vol. 238 Pg. 367.

Beginning at a point in T.R. 611 North 1°00' East 1,289.33' from the S.W. corner of the N.E. 1/4 of Sec. 4;

thence leaving the West Line there of South 89°22' East 269.83' to an iron pin, and passing over an iron pin at 20.00';
thence South 1°00' West 161.33' to an iron pin;

thence North 89°22' West 270.00' to a point in T.R. 611 on the West Line of S.W. 1/4 of N.E. 1/4, and passing over an iron pin at 250.00';

thence with said line and T.R. 611 N1°00' East 161.33' to the point of beginning and containing 1.00 acres, but subject to all legal highways.

Scale: 1" = 100'

NORTH



Known as part of S.W. 1/4 of N.W. 1/4 Sec. 4, T14N, R12W, of Salt Creek Twp., Hol. Co., Ohio.

Robert L. Kasner P.S. 5193
P.E. 20820
8/10/93

183537

Rec'd AUG 20 1993
AUG 23 1993

AT 1:31 O'clock P.M.
Holmes Co. Ohio Fee \$20.00

Plant Vol. 14
Deed vol. 261 pg. 220

Plat Vol. 14 Pg. 282 Recorder, Sally Miller

INDEXED

PLAT APPROVED
8/20/93 B