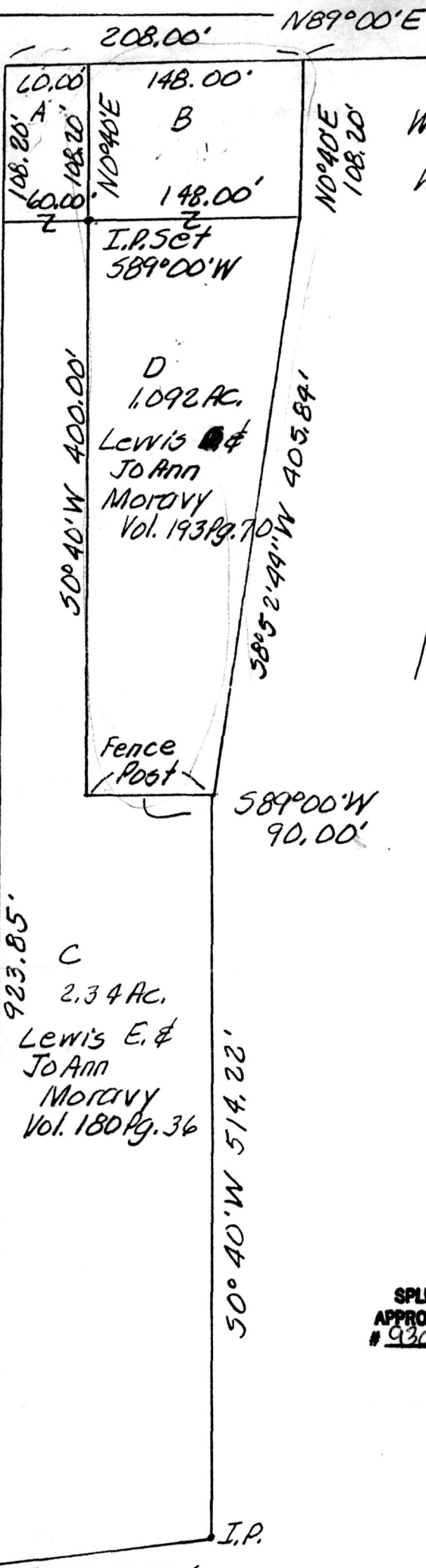


Thomas P. & Pamela S. Obrest
Vol. 222 Pg. 362

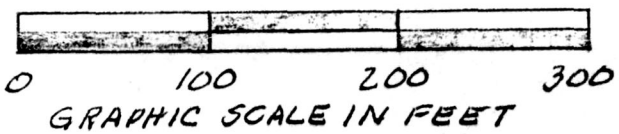


L.T.R. 574
Wilbur Shawn
Moravy
Vol. 214 Pg. 858

N.E. corner of
Sec. 14, T13N,
R13W, of
Prairie Twp.,
Hol. Co., Ohio

A & B make up a 0.52 acre tract owned by Lewis
O. Moravy Vol. 174 Pg. 237.
A is 0.1464 acres, and is being combined with C to make a 2.4864 acre tract to be sold by Moravy.
B is 0.3678 acres, and is being combined with D to make a 1.4598 acre tract to be retained by Moravy.

Wayne L. & Barbara Ann Kline
Vol. 216 Pg. 186



C
2.34 AC.
Lewis E. &
Jo Ann
Moravy
Vol. 180 Pg. 36



SPLIT APPROVED #930004

This 1.4598 acre parcel is approved for residential wastewater treatment

Sanitarian Jon M. Group Date 4/13/93

LEWIS O. MORAVY
Known as part of Sec. 14, T13N, R13W, of Prairie Twp., Hol. Co., Ohio.

Robert L. Kasner P.S. 5193
P.E. 28820
7/20/91

INDEXED

APR 14 1993
Recorded APR 15 1993
Plat Vol. 14 Pg. 191
Deed Vol. 259 Ps. 566
Holmes Co. Ohio Fee: \$5.00
Recorder: Jacey Miller
Borrett

PLAT APPROVED
4/19/93 B