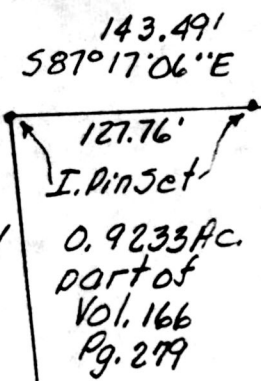


ELI A. & Effie Yoder  
Vol. 166 Pg. 279



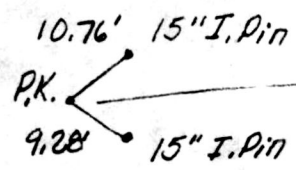
P.K. Nail set

Ervin A. & Susie  
Hershberger  
Vol. 223 Pg. 829  
P.B. 7 Pg. 447

N0°38'23\"/>

0.9233 Ac.  
part of  
Vol. 166  
Pg. 279

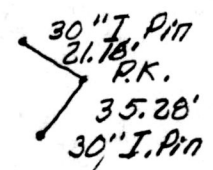
Note: This line goes up  
a common drive way  
and across a small  
stream.



N83°40'32\"/>

P.K. Nail Set  
see Note

P.K. Nail Set  
162.13'  
P.K. Nail Set  
275.17'



Ben M. & Ada  
Miller  
Vol. 149 Pg. 249



P.K. Nail set  
322.77'  
P.R.S. Fd.

N42°20'17\"/>

Wayne E. & Anna  
Yoder  
Vol. 247 Pg. 48  
P.B. 12 Pg. 411

200.00'  
I, Pin Fd  
123.50'

This 0.9233 acre plat is  
approved for residential  
wastewater treatment.

6/29/92  
Date  
Sanitarian

SPLIT  
APPROVED  
# 920251

Stone Fd. at S.E. cnr  
of N.E. 1/4 Sec. 1, T14N,  
R12W, of Salt Creek  
Twp., Hol. Co., Ohio

PLAT OF A SURVEY FOR  
ELI A. YODER  
(Grantor)  
Known as part of the N.E. 1/4  
Sec. 1, T14N, R12W of Salt  
Creek Twp., Hol. Co., Ohio

Robert L. Kasner P.S. 5193  
P.E. 28820  
10/1/91



GRAPHIC SCALE IN FEET  
180125

10/1/91 Rec'd. DEC 28 1992  
Recorded DEC 29 1992  
Plat Vol. 14  
Deed Vol 258 Pg 343

AT 4:21 O'CLOCK PM 12/23/92 B  
PLAT APPROVED

Holmes Co. Ohio Fees 5.00

Recorder Mary Ellen Signet  
Laund