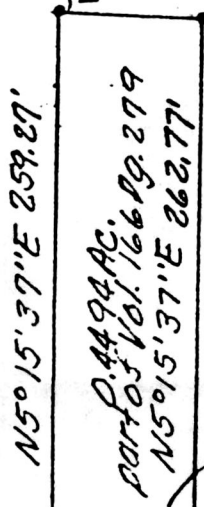


Eli A. & Effie Yoder
Vol. 166 Pg. 279

583°12'00"E
75.03' I. Pin Set



Eli A., Matthew Roy
& Stephen Jay Yoder
dba
Valley View Oak
Vol. 253 Pg. 701

16.83' P.K. Nail set

Approximate E.T.R. 652

Ben M. & Ada
Miller
Vol. 149 Pg. 249

N80°31'53"W 75.20'
224.52'
I. Pin Set

275.17'

38.65' P.K. Nail set

N80°31'53"W 263.17'
I. Pin Set

R.R.S. FB 2

SEC. 6, T14N
R11W

Wayne E. & Anna Yoder
Vol. 247 Pg. 48
P.B. 12 Pg. 411

382.77' N4°22'07"E

200.00'

I. Pin FB

N.E. '14

Stone FB at S.E. corner
N.E. '14 Sec. 1, T14N,
R12W, of Salt Creek
Twp., Hol. Co., Ohio

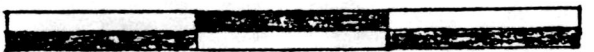
S.E. '14

This 0.4494 acre parcel is not approved
for any use that generates wastewater.

6/24/92
Date

Sanitarian

SPLIT
APPROVED
920250



GRAPHIC SCALE IN FEET



PLAT OF A SURVEY FOR
ELI A. YODER

(Grantor)

Known as part of the N.E.
'14 Sec. 1, T14N, R12W, of
Salt Creek Twp., Hol. Co., Ohio

Robert L. Kasner P.S. 5193
P.E. 28820
10/11/91
12/22/92

180084

REC'D. DEC 23 1992

AT 12:48 O'CLOCK PM INDEXED

PLAT APPROVED
12/22/92

Recorded DEC 24 1992

Holmes Co. Ohio Fee: \$5.00

Plat Vol. 14 Pg. 116 Recorder [Signature]