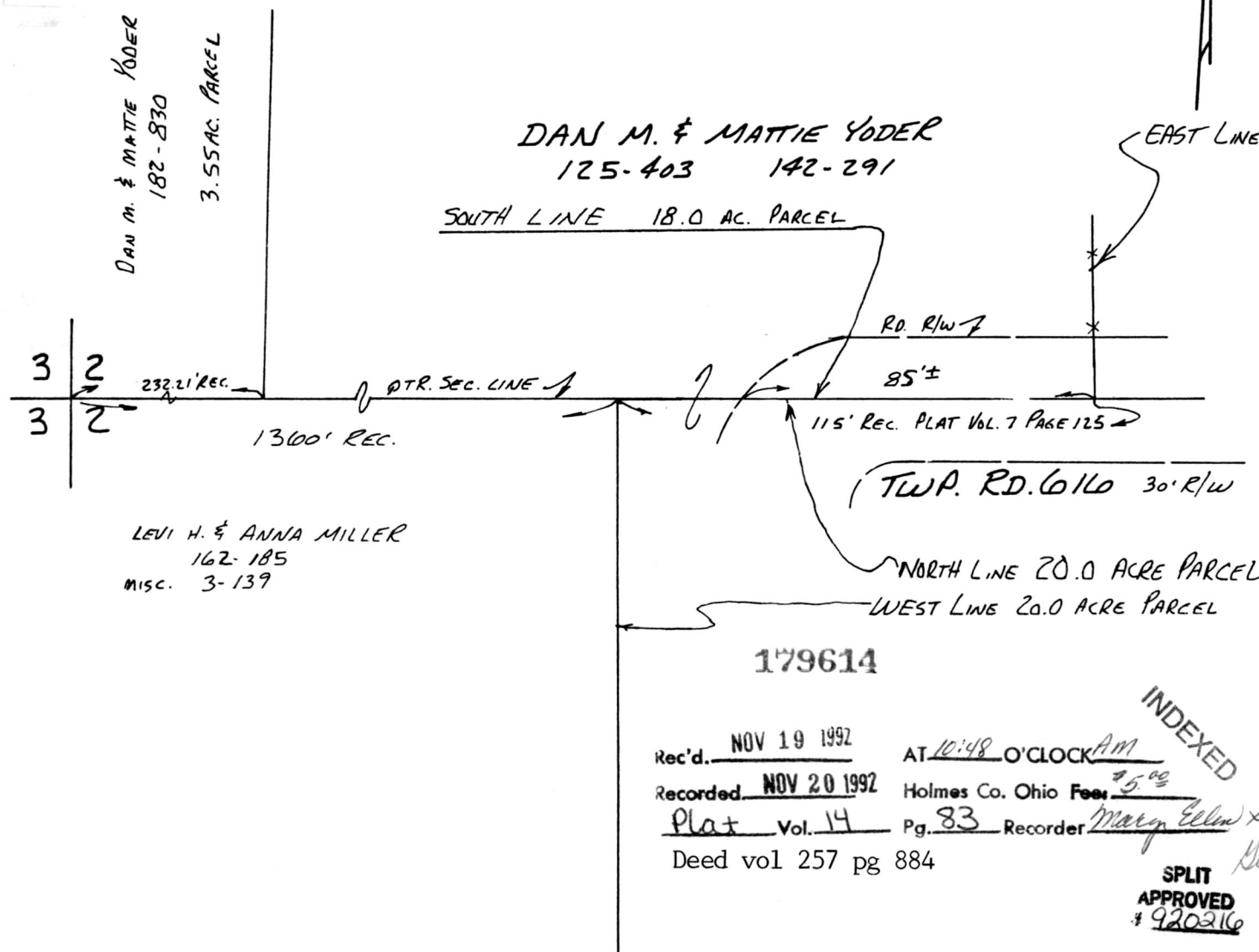
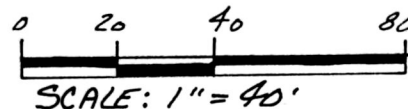


PLAT SHOWING ROAD FRONTAGE ON TOWNSHIP ROAD 616 AS REQUESTED BY THE HOLMES COUNTY PLANNING DEPT. AND THE HOLMES COUNTY TAX MAP OFFICE.

SALT CREEK TOWNSHIP N.W. & S.W. QTR. SEC. 2 T-14 N; R-12W HOLMES Co., OHIO



I CERTIFY THIS PLAT TO BE CORRECT TO THE BEST OF MY KNOWLEDGE.

Donald C. Baker  
DONALD C. BAKER P.S. 6938  
5958 T.R. 322  
MILLERSBURG, OHIO 44654  
PH. (216) 674-4788

NOV. 10, 1992

Rec'd. NOV 19 1992 AT 10:48 O'CLOCK AM  
Recorded NOV 20 1992 Holmes Co. Ohio Fee \$5.00  
Plat Vol. 14 Pg. 83 Recorder Mary Ellen Segin  
Deed vol 257 pg 884

INDEXED

SPLIT APPROVED \$920216

48792-MLS

PLAT APPROVED 11/18/92 B