

I. Pipe Fd at S.W. corner Lot 535

33.00' Alley

Lots 537 & 538 of John Ingles 2nd Addition
Lot 536 as platted in P.B. 1 Pg. 92 dated Jan. 23, 1867

Wm. J. Paulson Vol. 234 Pg. 285

N 79° 45' E

I. Pin set

92.51'

I. Pin set



Concrete Monument
Fd S.W. corner out lot
104 to the Village
of Millersburg.

107.42'
N 8° 40' 49" W

12.25'
Concrete Monument
Fd S.W. corner Lot
930 in Rustic Acres
49.92 58° 38' 23" E

Concrete Monument
Fd N.W. corner Lot
900 in Rustic Acres

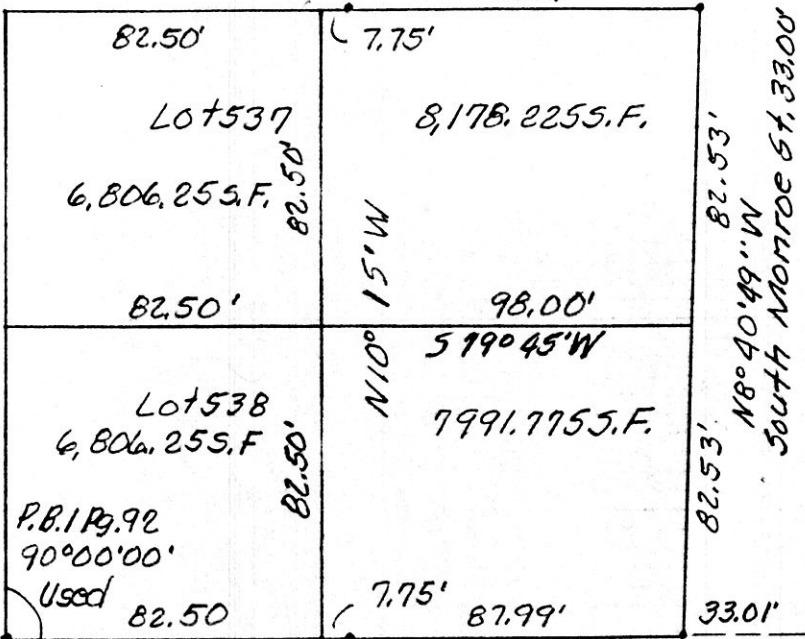
Robert L. Kasner P.S. 5193
P.E. 28820
4128192
Revised 8/6/92

LOT SPLIT APPROVED BY
MILLERSBURG VILLAGE

PLAT APPROVED
8-14-92

8-10-92

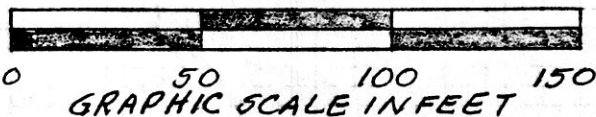
Wm. J. Paulson, Adm.



Lot 537 255.50' MCAS. 283.90'
P.B. 1 Pg. 92 gives 82.50' + 82.50' + 82.50' + 33.00' = 280.50'
155.107
82.50' N 10° 15' W 82.50' 16.5' Alley

Deed vol 256 pg 740
rec'd. Aug 14 1992
AT 10:20 O'Clock AM

Note: According to P.B. 1 Pg. 92 dated Jan. 23, 1867 these lots should have been 82.5' N/S by 165.0' E/W. They do not fit those dimensions at all. The iron pipes were found at the S.W. corners of Lots 538 and 535. Taking this line and turning 90° 00' 00" the south line of Lot 538 was extended to the East side of South Monroe St. From this the West side was located and the two lots were thusly staked out.



178256

Recorded Aug 17 1992

Holmes Co. Ohio Fee 5.00 P.R.

INDEXED

Plat Vol 14 Pg 17