

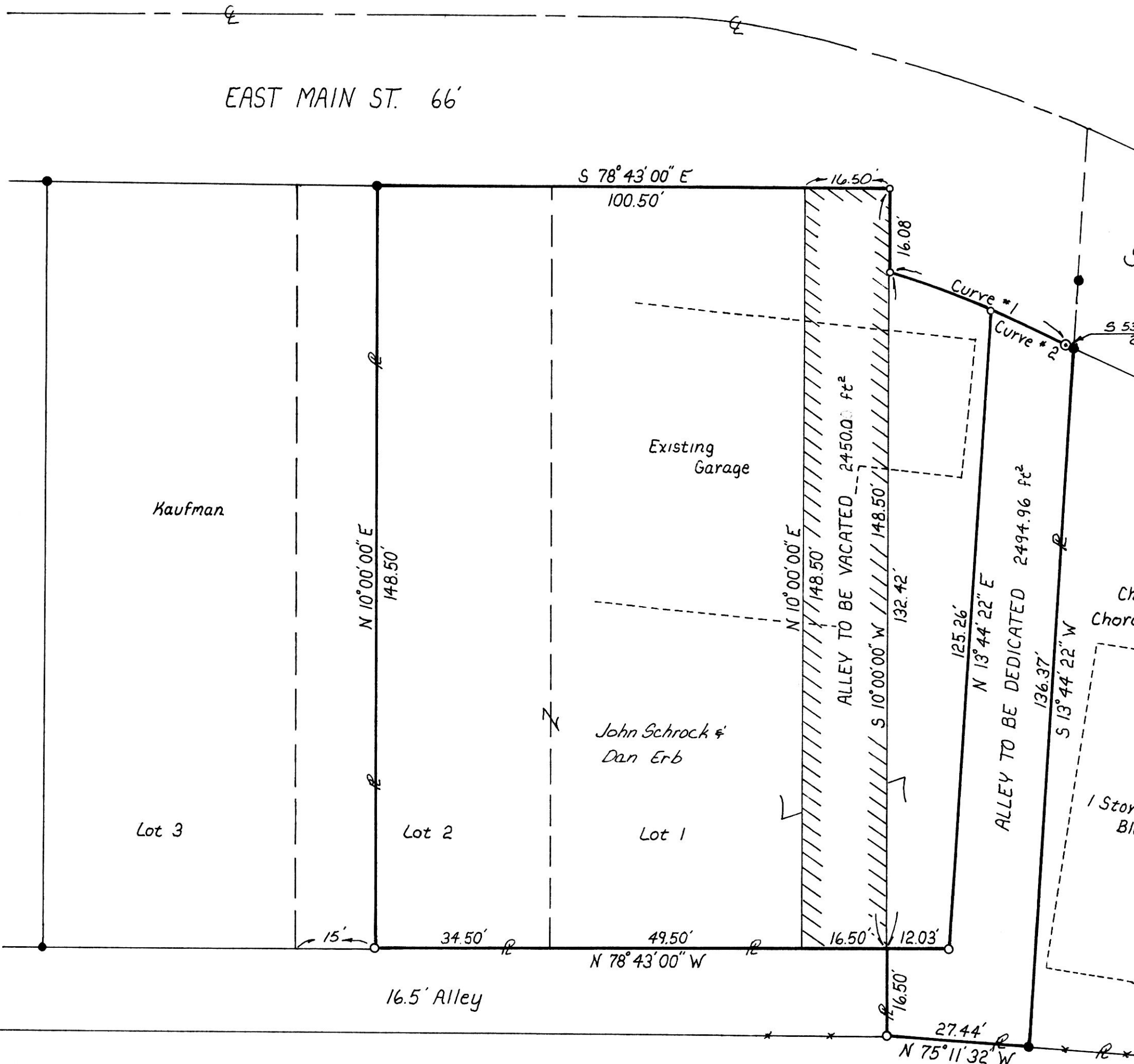
Survey For John Schrock & Dan Erb
Including Alleys To be Vacated and Dedicated

BERLIN TOWNSHIP, HOLMES COUNTY
VILLAGE OF BERLIN
INLOT 1, PARTS OF INLOT 2 & OUTLOT 5
N.W. Qtr., Sec. 15, T-9-N, R-5-W

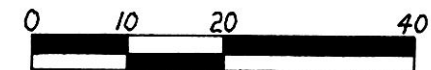
The Board of Holmes County Commissioners hereby approve the vacation of the "ALLEY TO BE VACATED" and accept and dedicate to public use the "ALLEY TO BE DEDICATED" as shown hereon. SEE RESOLUTIONS 07-27-92-2 and 07-27-92-3.

SIGNED THIS 27 DAY OF July, 1992.

Robert Lee
CHAIRMAN, HOLMES COUNTY COMMISSIONERS



	Curve #1	Curve #2
Δ =	7°40'50"	3°13'50"
R =	278.31'	278.31'
L =	37.31'	15.69'
Chord =	37.28'	15.69'
Chord Brg. =	S 57°31'05" E	S 55°17'35" E



Scale 1" = 20'

- Iron Pin Found
- Iron Pin Set (3/8 rebar)
- ⊙ Conc. R/w Monument Found
- P.K. Nail Set

Bearings Assumed

- Reference:
- Deed Vol. 171 Pg. 513
 - Deed Vol. 205 Pg. 460
 - S.R. 39 R/w Plans
 - Deed Vol. 11 Pg. 22

Steven Close

The "ALLEY TO BE DEDICATED" shown hereon is hereby accepted and dedicated to the public by Trustees of Berlin Township, Holmes County, Ohio, July 1992.

Duane E. Miller, TRUSTEE
Paul Boyd, TRUSTEE
Forest J. Handal, TRUSTEE

I Certify This Plat To be Correct To The Best of My Knowledge.
William H. Long May 12, 1982
William H. Long R.S. 6505



Outlot 5