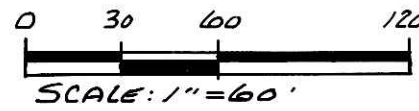
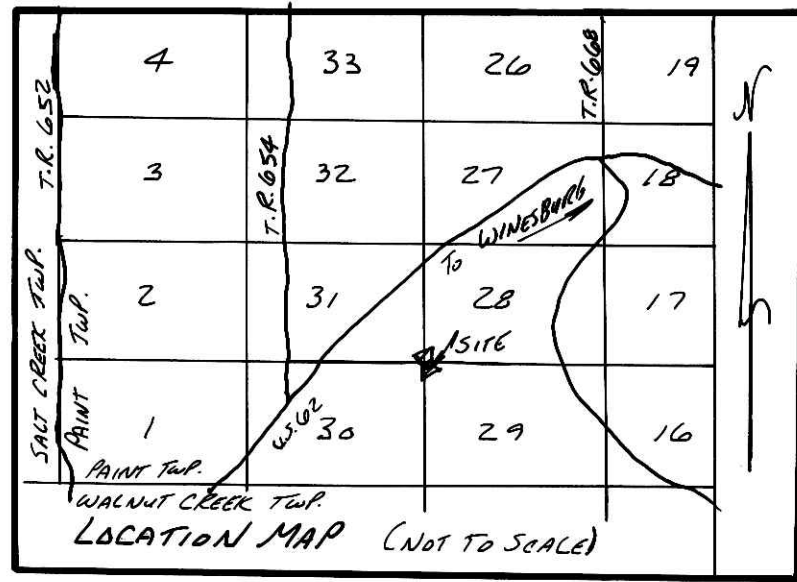


Vol. 13 pg. 197



- 1/2" IRON PIN FOUND
- 5/8" RE BAR WITH 1-D. CAP SET
- 1-D. CAP MARKED "BAKER 6938"

# EAST HOLMES INDUSTRIAL PARK ALLOTMENT NO. 3

PAINT TOWNSHIP  
4TH. QTR., LOTS 28, 29 & 31  
T-10N; R-5W  
HOLMES COUNTY, OHIO

REFERENCES:  
DEED Vol. 248 PAGE 989  
DEED Vol. 249 PAGE 463  
DEED Vol. 249 PAGE 469  
PLAT Vol. 9 PAGE 133  
PLAT Vol. 10 PAGE 58  
PLAT Vol. 12 PAGE 541  
PLAT Vol. 2 PAGE 224

BEARINGS FROM PLAT Vol. 13 PAGE 120

**GRANTORS:**

HOLMES COUNTY COMMUNITY IMPROVEMENT CORP.  
2. SOUTH CLAY ST.  
MILLERSBURG, OHIO 44654  
DEED Vol. 249 PAGE 463

**PREPARED BY:**

DONALD C. BAKER SURVEYING  
5958 T.R. 322  
MILLERSBURG, OHIO 44654  
PH. (216) 674-4788

AREA IN LOT 2.000 ACRES  
AREA IN ROAD DEDICATION 0.000 ACRES  
TOTAL AREA IN ALLOTMENT 2.000 ACRES

**CERTIFICATE OF OWNERSHIP AND DEDICATION**

WE HEREBY CERTIFY THAT WE ARE THE OWNERS OF THE PROPERTY SHOWN AND DESCRIBED HEREON AND THAT WE HEREBY ADOPT THIS PLAN OF SUBDIVISION WITH OUR FREE CONSENT, ESTABLISH THE MINIMUM BUILDING RESTRICTION LINES, AND DEDICATE ALL STREETS, ALLEYS, WALKS, PARKS, AND OTHER OPEN SPACES TO PUBLIC OR PRIVATE USE AS NOTED.

HOLMES Co. COMMUNITY IMPROVEMENT CORP.  
*Jerry Mullett, V.P.*  
*Jerry Mullett, V.P.*

June 3, 1993

**CERTIFICATE OF THE APPROVAL OF WATER AND SEWERAGE SYSTEMS**

I HEREBY CERTIFY THAT THE WATER SUPPLY AND SEWAGE DISPOSAL UTILITY SYSTEMS INSTALLED, OR PROPOSED FOR INSTALLATION, IN THE SUBDIVISION PLAT ENTITLED: EAST HOLMES INDUSTRIAL PARK ALLOTMENT NO. 3, FULLY MEET THE REQUIREMENTS OF THE HOLMES Co. BOARD OF HEALTH AND THE OHIO STATE HEALTH DEPT. AND ARE HEREBY APPROVED AS SHOWN.

June 18, 1993  
*James P. Quinn*  
COUNTY HEALTH COMMISSIONER

**CERTIFICATE OF APPROVAL BY THE HOLMES SOIL AND WATER CONSERVATION DISTRICT**

I HEREBY CERTIFY THAT I HAVE APPROVED THE SUBDIVISION PLAT AND/OR AGREEMENTS OR PROVISIONS FOR SEDIMENTATION AND EROSION CONTROL AS STATED OR SHOWN HEREON.

June 24, 1993  
*John W. Mast*  
HOLMES SOIL AND CONSERVATION DISTRICT

**CERTIFICATE OF THE APPROVAL BY THE COUNTY COMMISSIONERS**

I HEREBY CERTIFY THAT THE HOLMES Co. COMMISSIONERS HAVE APPROVED THE SUBDIVISION AS SHOWN HEREON.

7/6, 1993  
*Bob Lee*  
COUNTY COMMISSIONERS CHAIRMAN

**CERTIFICATE OF THE APPROVAL OF PLAT AND ENGINEERING DETAILS**

I HEREBY CERTIFY THAT I HAVE APPROVED THE PLAT AND ENGINEERING DETAILS OF THE PROPOSED ROADS, SEWER AND WATER SYSTEMS AND OTHER PROPOSED PUBLIC FACILITIES IN THE SUBDIVISION PLAT AS SHOWN HEREON.

6/25, 1993  
*Robert L. Kasner*  
COUNTY ENGINEER

**CERTIFICATE OF APPROVAL FOR RECORDING**

I HEREBY CERTIFY THAT THE SUBDIVISION PLAT SHOWN HEREON HAS BEEN FOUND TO COMPLY WITH THE SUBDIVISION REGULATIONS FOR HOLMES COUNTY, OHIO, WITH THE EXCEPTION OF SUCH VARIANCES, IF ANY, AS ARE NOTED IN THE MINUTES OF THE HOLMES Co. REGIONAL PLANNING COMMISSION AND THAT IT HAS BEEN APPROVED FOR RECORDING IN THE OFFICE OF THE COUNTY RECORDER.

July 6, 1993  
*Thomas R. Morgan*  
HOLMES REGIONAL PLANNING COMMISSION

Rec'd JUL 16 1993 AT 1:40 O'CLOCK P.M.  
Recorded JUL 19 1993 Holmes Co. Ohio Plat 21.60.  
Plat Vol. 13 Pg. 197 Recorder: Sally Miller  
Jawell

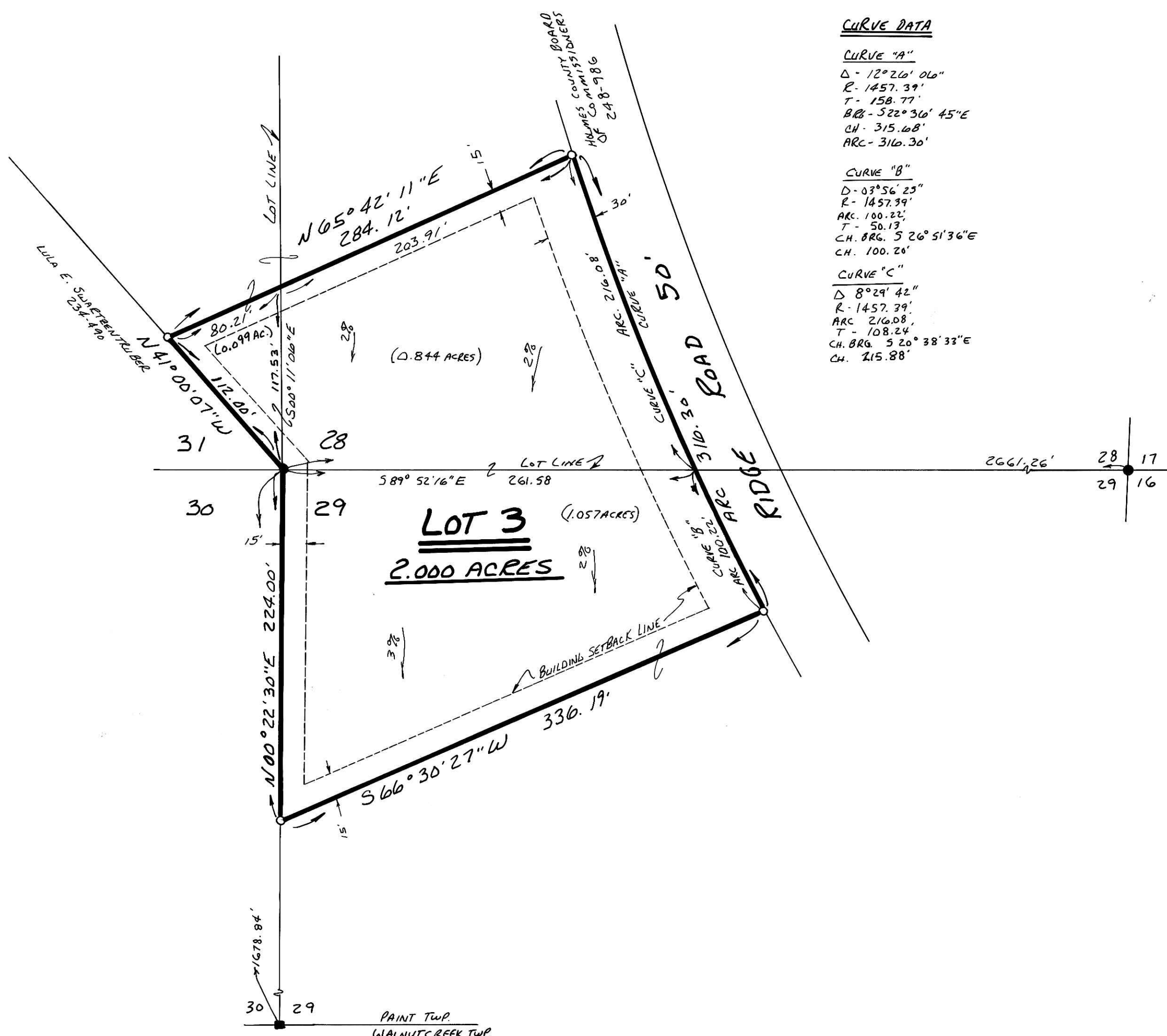


**CERTIFICATE OF ACCURACY**

I HEREBY CERTIFY THAT THE PLAN SHOWN AND DESCRIBED HEREON IS A TRUE AND CORRECT SURVEY TO THE ACCURACY REQUIRED BY THE HOLMES COUNTY REGIONAL PLANNING COMMISSION AND THAT THE MONUMENTS HAVE BEEN PLACED AS SHOWN HEREON.

JUNE 2, 1993  
*Donald C. Baker*  
DONALD C. BAKER P.S. 6938

TRANSFER NOT NECESSARY  
DATE: 7-16-93  
AUDITOR: Richard A. Sawyer



**CURVE DATA**

**CURVE "A"**  
D - 12° 26' 06"  
R - 1457.39'  
T - 158.77'  
B/C - 522° 36' 45"E  
CH - 315.68'  
ARC - 316.30'

**CURVE "B"**  
D - 03° 56' 25"  
R - 1457.39'  
ARC - 100.22'  
T - 50.13'  
CH - 86.52° 51' 36"E  
CH - 100.26'

**CURVE "C"**  
D - 8° 29' 42"  
R - 1457.39'  
ARC - 216.08'  
T - 108.24'  
CH - 86.52° 38' 33"E  
CH - 215.88'