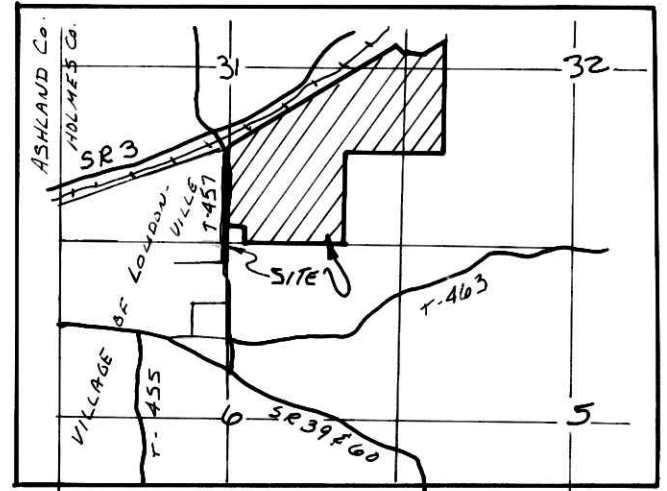
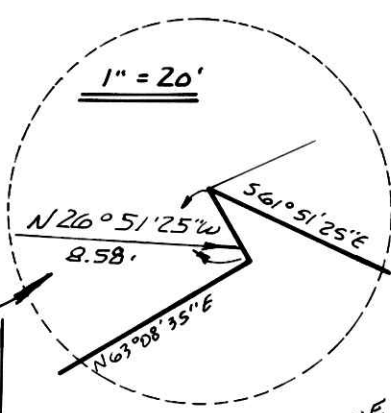
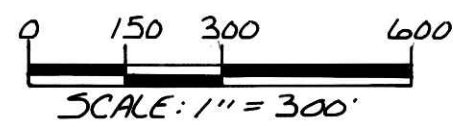


PROPOSED ANNEXATION TO THE VILLAGE OF LOUDONVILLE



WASHINGTON TOWNSHIP
N.W. QTR. SECTION 6 T-19; R-15W
N.E. & S.E. QTR. SECTION 31 T-20; R-15W
N.W. & S.W. QTR. SECTION 32 T-20; R-15W
HOLMES COUNTY, OHIO

CERTIFICATION OF THE APPROVAL BY THE HOLMES COUNTY COMMISSIONERS

I HEREBY CERTIFY THAT THE HOLMES COUNTY COMMISSIONERS HAVE APPROVED THE DETACHMENT OF THIS TRACT OF LAND AS SHOWN HEREON, FROM HOLMES COUNTY, AT A MEETING HELD THE 11th DAY OF January, 1993.

Paul
PRESIDENT, COUNTY COMMISSIONERS

APPROVAL OF LOUDONVILLE, OHIO, PLANNING COMMISSION
I, THE UNDERSIGNED, BEING THE SECRETARY OF THE PLANNING COMMISSION OF THE VILLAGE OF LOUDONVILLE, OHIO, DO HEREBY CERTIFY OUR APPROVAL OF THE ATTACHED PLAT OF ANNEXATION TO THE VILLAGE OF LOUDONVILLE, OHIO, THIS 28th DAY OF June, 1993.

Chaine B. Vanhorn
SECRETARY, PLANNING COMMISSION

APPROVAL OF LOUDONVILLE VILLAGE COUNCIL
I HEREBY CERTIFY THAT THIS PLAT FOR ANNEXATION WAS APPROVED BY THE VILLAGE COUNCIL OF LOUDONVILLE, OHIO, AT A MEETING HELD ON THE 21st DAY OF June, 1993. Ordinance No. 36-93

William B. Yum
VILLAGE CLERK

RECORDERS CERTIFICATION #182871
I HEREBY CERTIFY THAT THIS PLAT WAS RECEIVED FOR RECORD ON THE JUL 07 1993 DAY OF JULY, 1993, AT 12:46 O'CLOCK P.M. AND WAS RECORDED THE 13 DAY OF JUL 08 1993, 1993, IN PLAT VOL. 13 PAGE 195 OF THE HOLMES COUNTY RECORDS.

FEE 21.60
Sally Miller
HOLMES COUNTY RECORDER

SURVEYOR'S CERTIFICATION
I HEREBY CERTIFY THAT THIS PLAT WAS PREPARED ON BEHALF OF THE VILLAGE OF LOUDONVILLE FROM EXISTING SURVEYS AND DEEDS THIS 4th DAY OF DECEMBER, 1991.

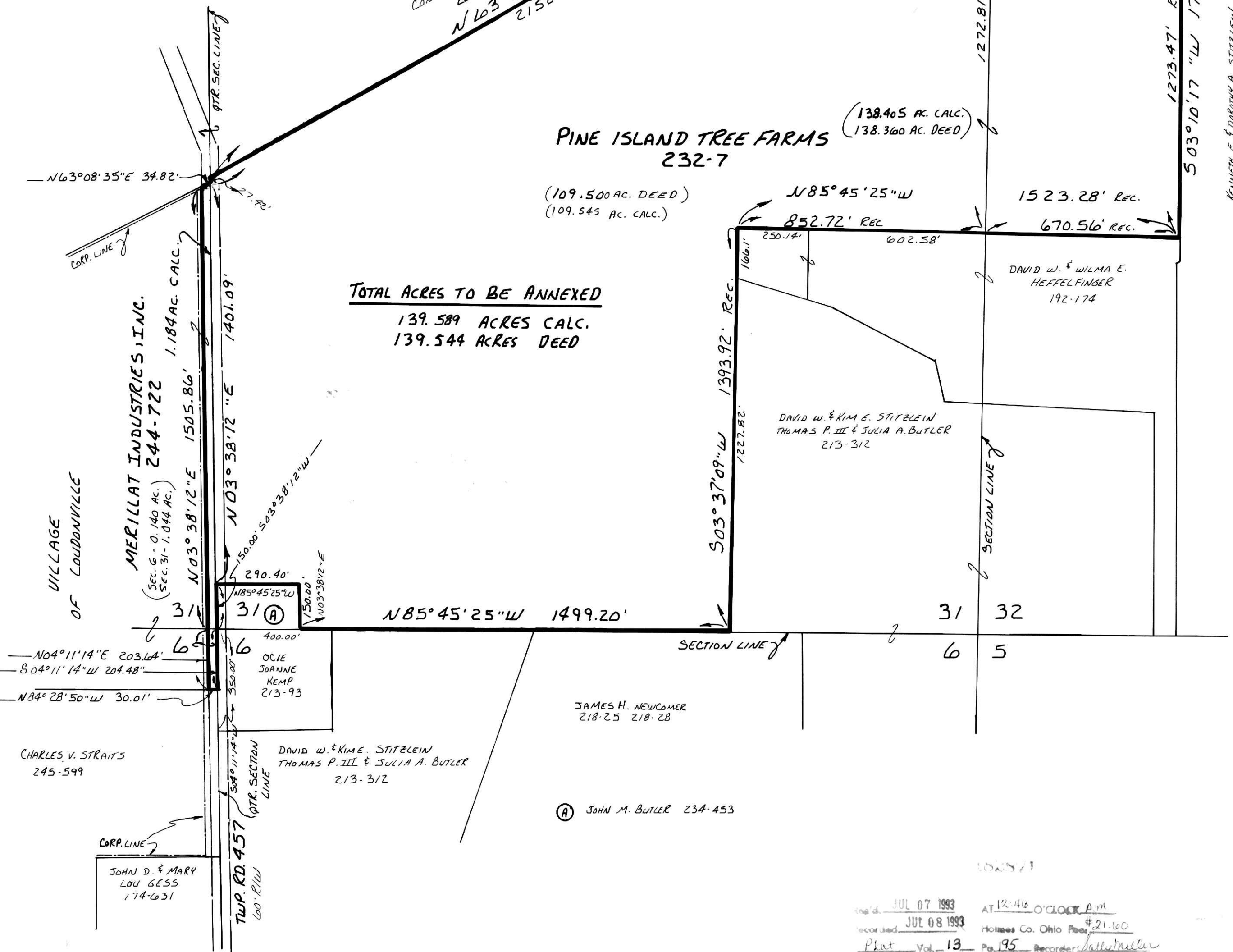


Donald C. Baker
DONALD C. BAKER P.S. 6938
5958 T.R. 322
MILLERSBURG, OHIO 44654
PH. (216) 674-4788

Recorded JUL 07 1993 AT 12:46 O'CLOCK P.M.
Recorded JUL 08 1993 Holmes Co. Ohio Files # 21.60
Plat Vol. 13 Pg. 195 Recorder Sally Miller
Deed vol. 260 pg. 665 Townships Four

PINE ISLAND TREE FARMS
232-7
(138.465 AC. CALC.)
(138.360 AC. DEED)

TOTAL ACRES TO BE ANNEXED
139.589 ACRES CALC.
139.544 ACRES DEED



CHARLES V. STRAITS
245-599

JAMES H. NEWCOMER
218-25 218-28

(A) JOHN M. BUTLER 234-453

DAVID W. & KIM E. STITZLEIN
THOMAS P. III & JULIA A. BUTLER
213-312

JOHN D. & MARY
LOU GESS
174-631