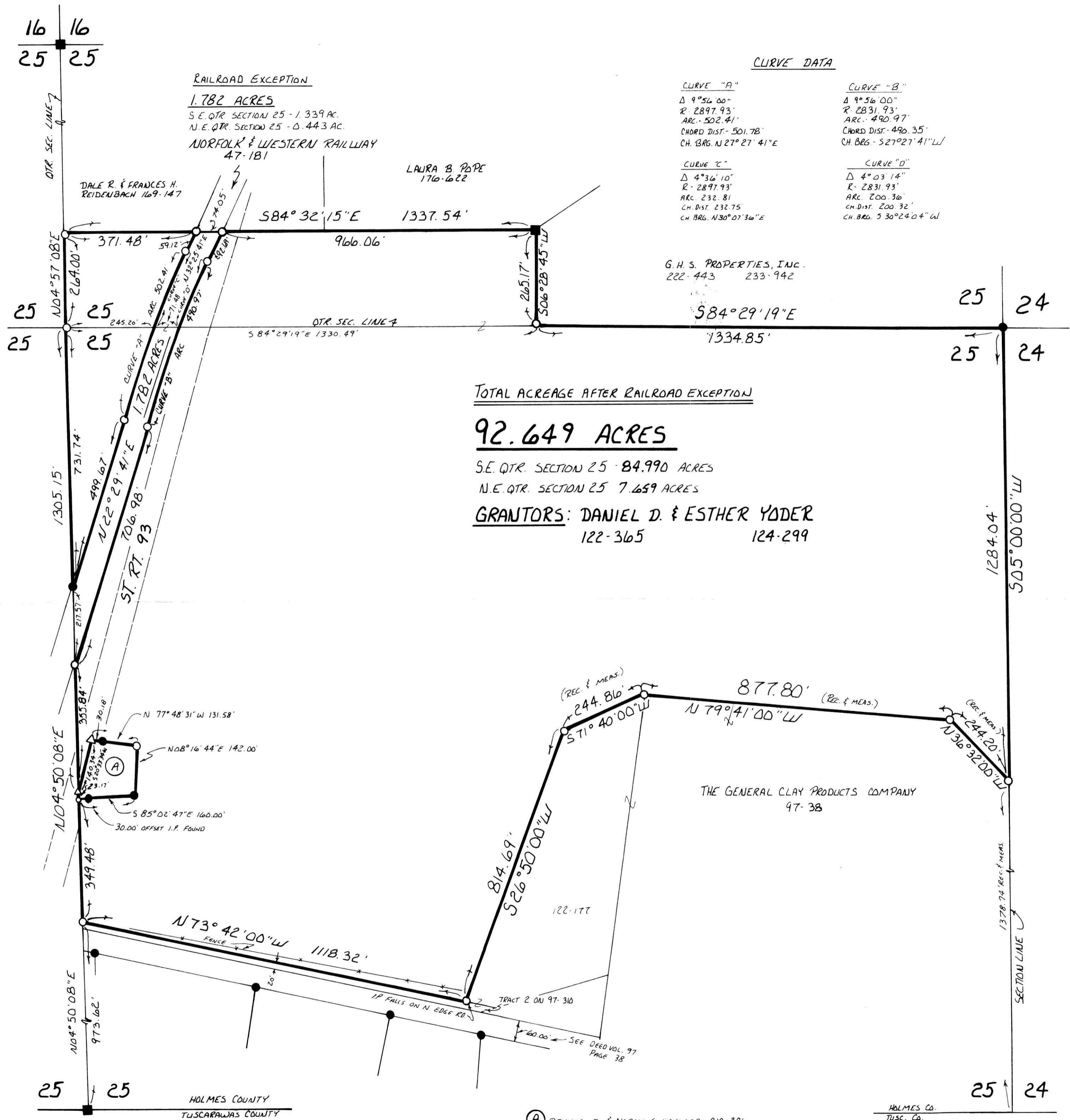


# CLARK TOWNSHIP PART OF THE N.E. QTR. & S.E. QTR. SECTION 25 TWP. 8N RANGE 4W HOLMES COUNTY, OHIO



**CURVE DATA**

<b>CURVE "A"</b> Δ 9°56'00" R 2897.93' ARC 502.41' CHORD DIST 501.78' CH BRG. N 27°27'41"E	<b>CURVE "B"</b> Δ 9°56'00" R 2831.93' ARC 490.97' CHORD DIST 490.35' CH BRG. S 27°27'41"W
<b>CURVE "C"</b> Δ 4°36'10" R 2897.93' ARC 232.81' CH DIST 232.75' CH BRG. N 30°07'36"E	<b>CURVE "D"</b> Δ 4°03'14" R 2831.93' ARC 200.36' CH DIST 200.32' CH BRG. S 30°24'04"W

**RAILROAD EXCEPTION**  
1.782 ACRES  
S.E. QTR SECTION 25 - 1.339 AC.  
N.E. QTR SECTION 25 - 0.443 AC.  
NORFOLK & WESTERN RAILWAY  
47-181

LAURA B POPE  
176-622

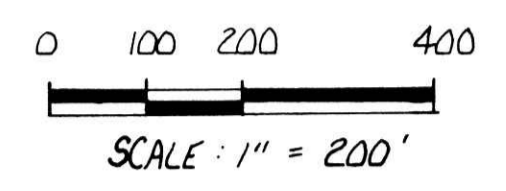
G. H. S. PROPERTIES, INC.  
222-443 233-942

**TOTAL ACREAGE AFTER RAILROAD EXCEPTION**

**92.649 ACRES**

S.E. QTR. SECTION 25 84.990 ACRES  
N.E. QTR. SECTION 25 7.659 ACRES

**GRANTORS: DANIEL D. & ESTHER YODER**  
122-365 124-299



- STONE FOUND
- IRON PIN FOUND
- △ R.R. SPIKE SET
- NAIL SET
- 5/8" REBAR WITH I.D. CAP SET
- I.D. CAP MARKED "BAKER 6938"

**REFERENCES:**

- PLAT VOL. 5 PAGE 80
- PLAT VOL. 9 PAGE 197
- PLAT VOL. 3 PAGE 4
- PLAT VOL. 7 PAGE 58
- RAILROAD PLANS
- VARIOUS DEEDS AS SHOWN

BEARINGS FROM DEED VOL. 122 PAGE 365  
AND DEED VOL. 124 PAGE 299

**ACREAGE INCLUDING RAILROAD EXCEPTION**

**94.431 ACRES**  
S.E. QTR. SECTION 25 - 86.329 ACRES  
N.E. QTR. SECTION 25 - 8.102 ACRES



I CERTIFY THIS SURVEY TO BE CORRECT  
TO THE BEST OF MY KNOWLEDGE.

Donald C. Baker  
DONALD C. BAKER P.S. 6938  
4321 T.R. 252  
GLENUMONT, OHIO

MARCH 2, 1990

168017

**INDEXED**

RECORDED JUN 07 1990 AT 9:50 AM  
RECORDED JUN 08 1990  
Plat Vol. 13 Pg. 105 Recorder Richard Gravene  
Lavel

PLAT APPROVED  
6/5/90 B