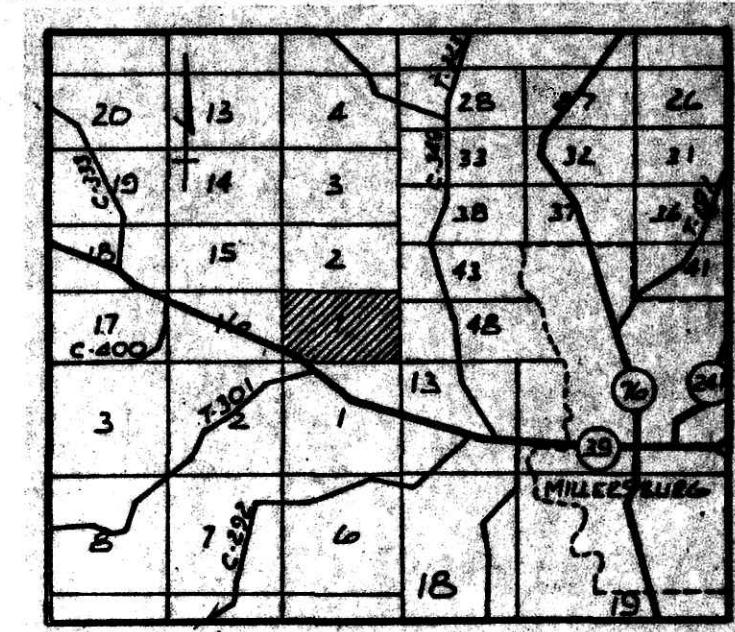
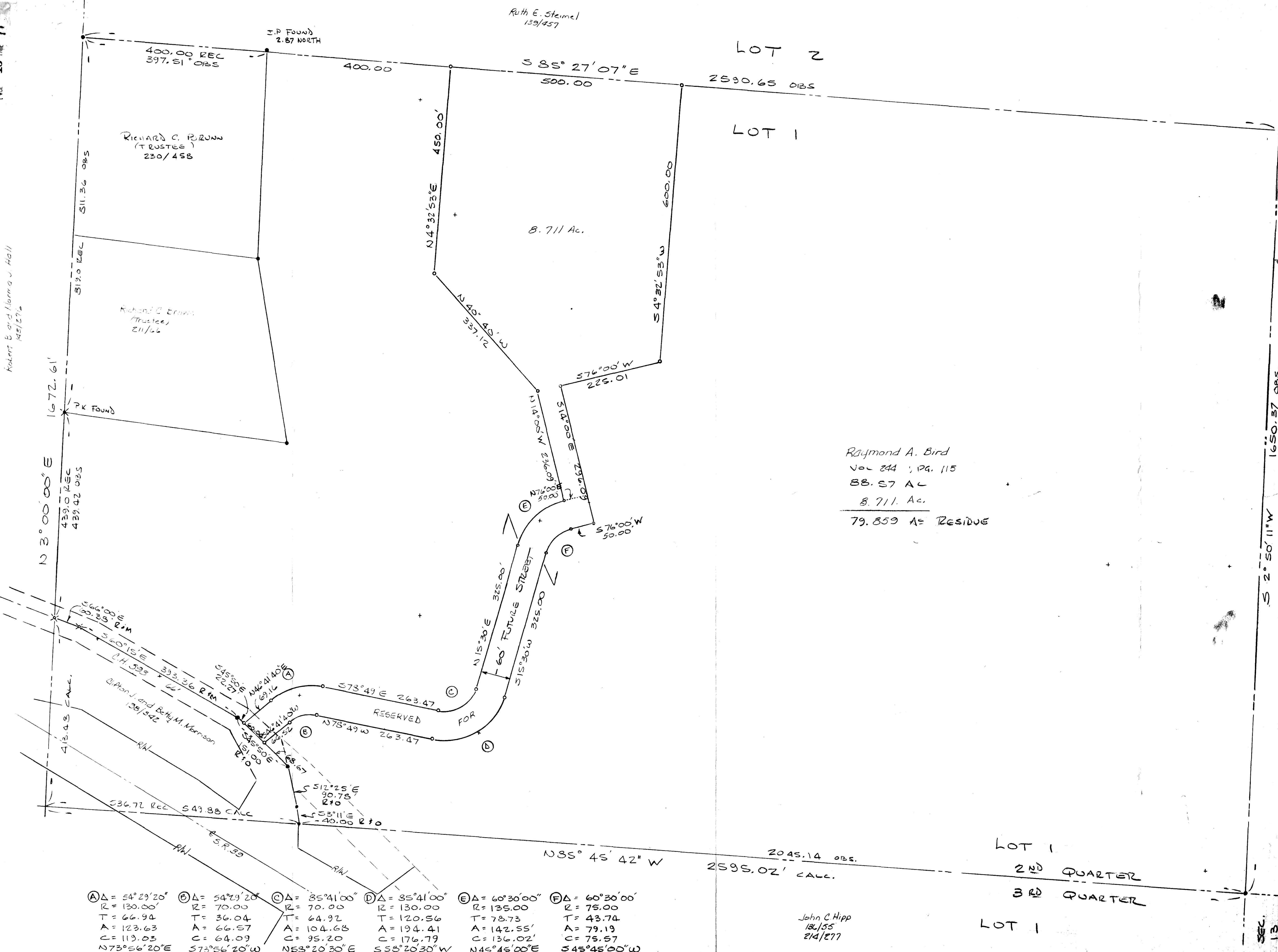


VOL 13 PAGE 77

Kolbert E and Norma J. Hall
145/171



0 50' 100' 200'
Scale In Feet

- Iron Pin Found
- Iron Pin Set (S.J.C. Inc)
- ★ Corner Post Found
- P.K. Nail Found
- ⊗ P.K. Nail Set

Raymond A. Bird
Vol 244, Pg. 115
88.57 AC
8.711 Ac.
79.859 AC RESIDUE

LOT 43
Ruth E. Stempel
141/582

LOT 48
Mary Esther Hipp
160/409
219/273

164907 Deed Vol. 244 Pg. 496
RECD. AUG 24 1989
AT 2:01 o'clock PM
RECORDED AUG 25 1989
Plat VOL 13 PG 77
Holmes Co. Ohio Fees \$37.80
Richard G. Gause
Distances shown hereon are expressed in feet and decimal parts thereof, bearings are to an assumed meridian and are used to express angles only, iron pins or monuments were found or will be set as indicated, all of which I hereby state to be correct to the best of my knowledge, information and belief.
Virgil D. Landis P. S. #6551 Date 8-11-89



| | | | | | |
|-----------------|-----------------|-----------------|-----------------|-----------------|-----------------|
| Ⓐ Δ = 54°29'20" | Ⓛ Δ = 54°29'20" | Ⓒ Δ = 85°41'00" | Ⓓ Δ = 85°41'00" | Ⓔ Δ = 60°30'00" | Ⓕ Δ = 60°30'00" |
| R = 130.00' | R = 70.00' | R = 70.00' | R = 130.00' | R = 135.00' | R = 75.00' |
| T = 66.94 | T = 36.04 | T = 64.92 | T = 120.56 | T = 78.73 | T = 43.74 |
| A = 123.63 | A = 66.57 | A = 104.68 | A = 194.41 | A = 142.55' | A = 79.19 |
| C = 113.03 | C = 64.09 | C = 95.20 | C = 176.79 | C = 136.02' | C = 75.57 |
| N73°56'20"E | S73°56'20"W | N53°20'30"E | S58°20'30"W | N45°45'00"E | S45°45'00"W |

John C. Hipp
181/55
214/277

SHAFER, JOHNSTON, LICHTENWALTER & ASSOCIATES, INC.
CONSULTING ENGINEERS - SURVEYORS
MANSFIELD OHIO WOOSTER

MAP OF SURVEY
Lot 1 2ND QUARTER
T. 9N. R. 7W
HARDY TOWNSHIP
HOLMES COUNTY, OHIO

DRAWN VOL 13 CHECKED SCALE 1"=100' DATE AUG 89
JOB NO EW-762-A SHEET 1 OF 1