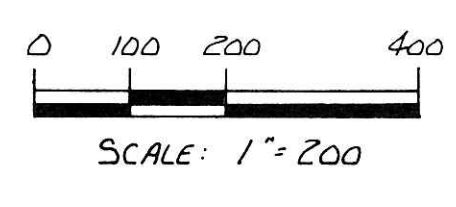


KILLBUCK TOWNSHIP

S.E. QTR. SECTION 1
 N.E. QTR. SECTION 10
 S.E. QTR. SECTION 10
 T-8 N R-8 W
 N.W. QTR. SECTION 6
 S.W. QTR. SECTION 6
 T-8 N R-7 W
 HOLMES COUNTY, OHIO

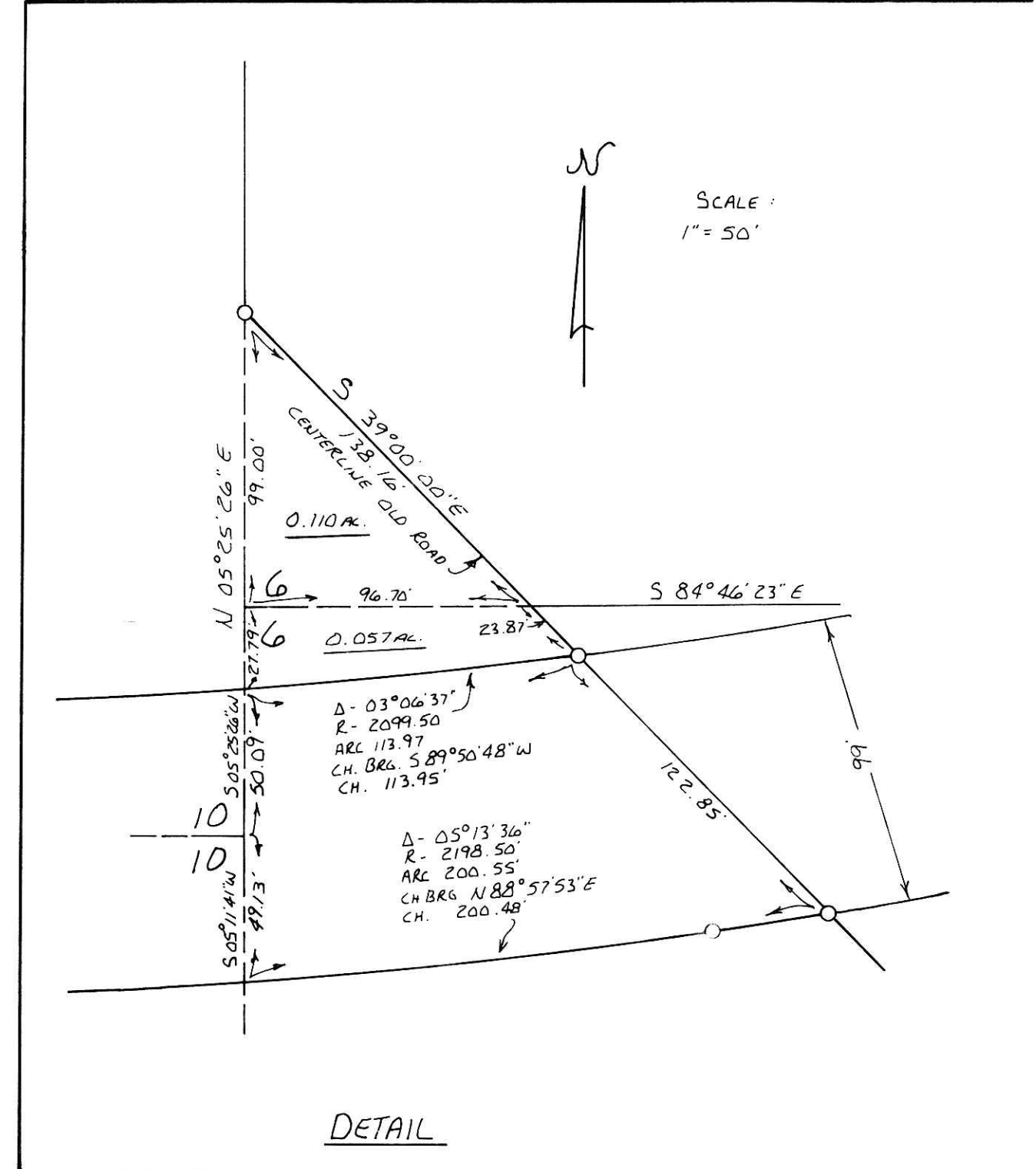
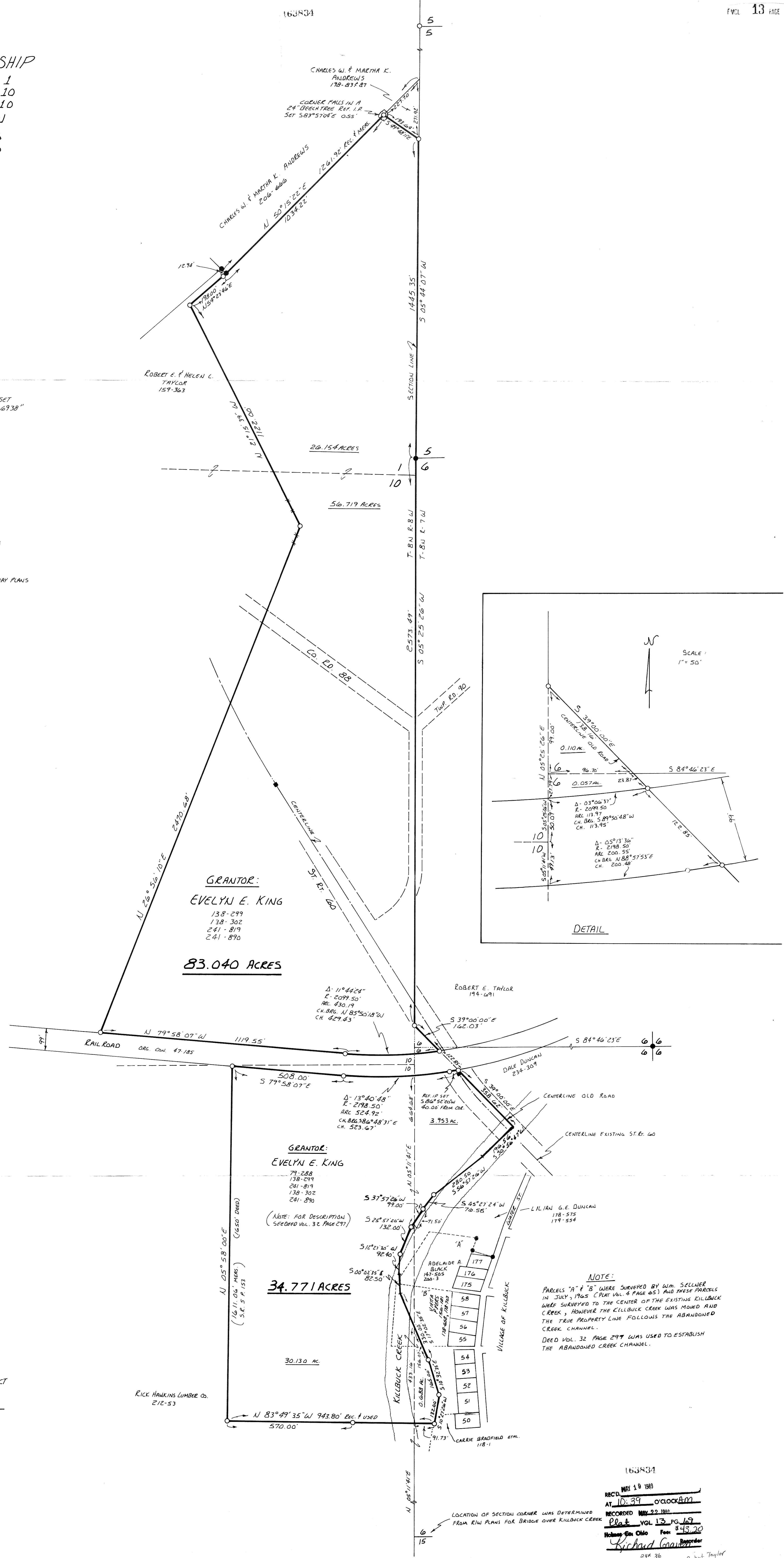
SURVEYED FOR EVELYN KING



- HIGHWAY MON.
- IRON PIN FOUND
- 3/8" REBAR WITH I.D. CAP SET
- I.D. CAP MARKED "BAKER 6938"

REFERENCES:

- PLAT VOL. 10 PAGE 550
- PLAT VOL. 8 PAGE 458
- PLAT VOL. 10 PAGE 427
- PLAT VOL. 4 PAGE 65
- SURVEY RECORD 3 PAGE 223
- SURVEY RECORD 5 PAGE 153
- SURVEY RECORD 4 PAGE 378
- RAILROAD PLANS
- BEARINGS FROM STATE HIGHWAY PLANS ST. RT. 60
- DEED VOL. 32 PAGE 297
- VARIOUS DEEDS AS SHOWN



I CERTIFY THIS SURVEY TO BE CORRECT TO THE BEST OF MY KNOWLEDGE.
 Donald C. Baker
 DONALD C. BAKER P.S. 6938
 4321 T.E. 252 GLENMONT OH.
 MAY 5, 1989

NOTE:
 PARCELS "A" & "B" WERE SURVEYED BY Wm. SELLNER IN JULY, 1765 (PLAT VOL. 4 PAGE 45) AND THESE PARCELS WERE SURVEYED TO THE CENTER OF THE EXISTING KILLBUCK CREEK, HOWEVER THE KILLBUCK CREEK WAS MOVED AND THE TRUE PROPERTY LINE FOLLOWS THE ABANDONED CREEK CHANNEL.
 DEED VOL. 32 PAGE 297 WAS USED TO ESTABLISH THE ABANDONED CREEK CHANNEL.

LOCATION OF SECTION CORNER WAS DETERMINED FROM R.I.W. PLANS FOR BRIDGE OVER KILLBUCK CREEK

163434
 REC'D MAY 10 1989
 AT 10:39 o'clock AM
 RECORDED MAY 22 1989
 Plat VOL 13 PG 69
 Holmes Co Ohio Fee \$43.20
 Richard G. Taylor