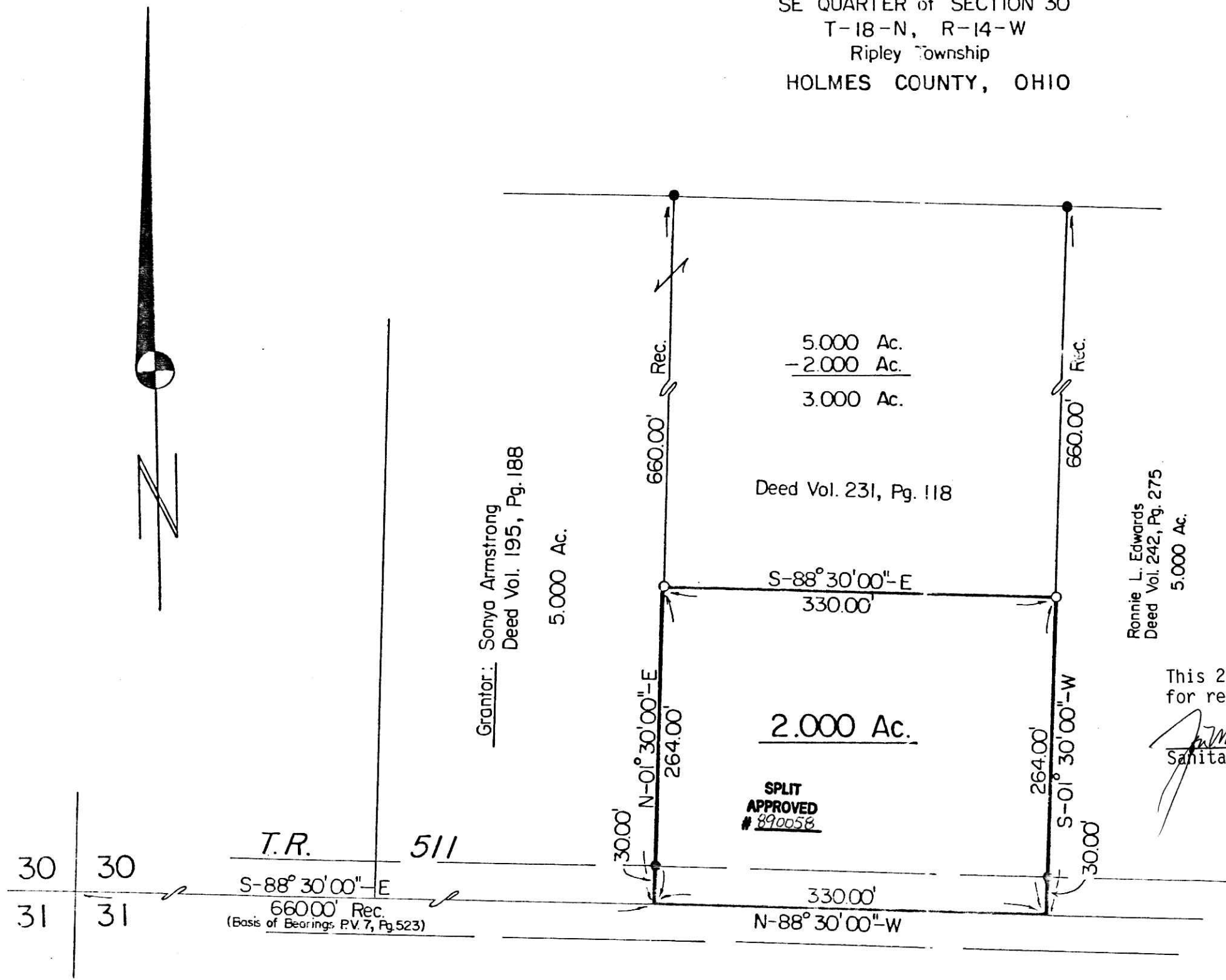


SURVEY PLAT of a 2.000 ACRE PARCEL

SE QUARTER of SECTION 30
T-18-N, R-14-W
Ripley Township
HOLMES COUNTY, OHIO

- Iron Pipe or Pin Fd.
- 5/8" x 30" Rebar With Yellow Plastic Cap
Marked RUDOLPH Set
6449



Grantor: Sonya Armstrong
Deed Vol. 195, Pg. 188
5.000 Ac.

Ronnie L. Edwards
Deed Vol. 242, Pg. 275
5.000 Ac.

5.000 Ac.
- 2.000 Ac.
3.000 Ac.

Deed Vol. 231, Pg. 118

2.000 Ac.

SPLIT APPROVED
890058

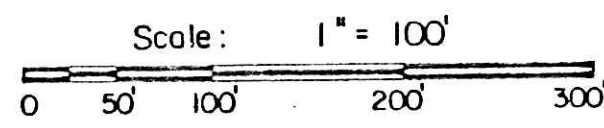
This 2.000 Ac. plat is approved for residential wastewater.

J.M. Group
Sanitarian
Date 4/24/89



I Certify This Survey And Plat To Be Correct To The Best Of My Knowledge.

4-07-89
Date
Ronald G. Rudolph
Ronald G. Rudolph, P.S. No. 6449
R.G. RUDOLPH SURVEYING, INC.
405 W. Liberty St.
Wooster, Ohio 44691



References
Plat Vol. 7, Pg. 523

163609 Job No. 3526

REC'D. APR 28 1989

AT 2:21 o'clock PM Deed Vol 243 Pg 119

RECORDED MAY 01 1989

Plat VOL. 13 PG. 65

Holmes Co. Ohio Fee: \$9.35

Richard Graves Recorder