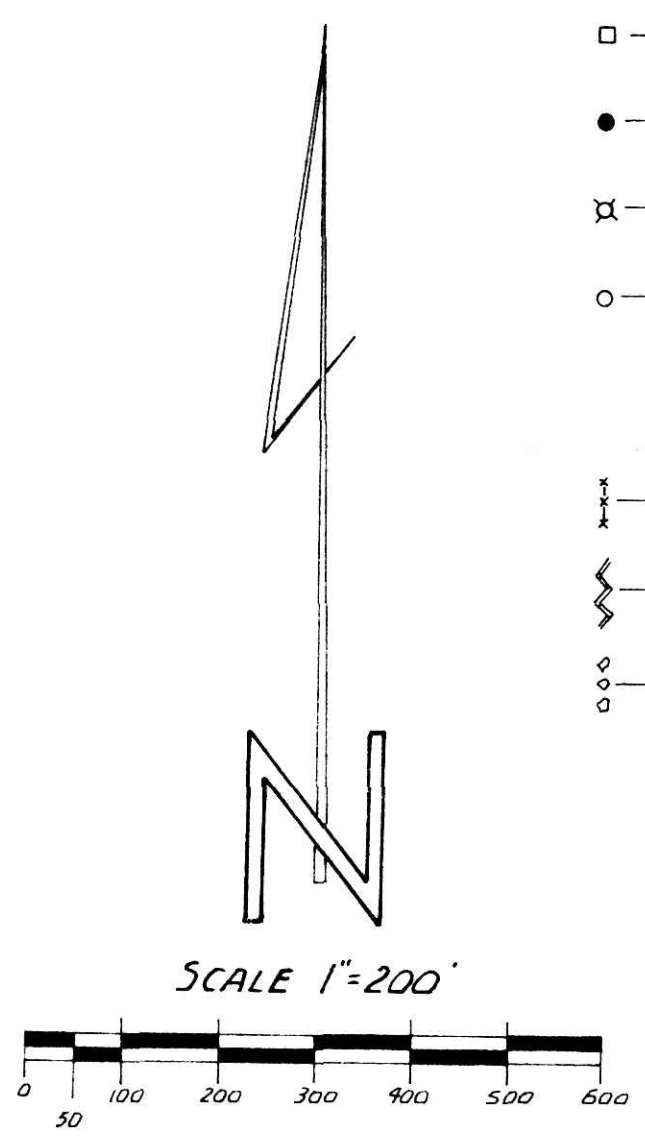


*** SURVEY PLAT ***

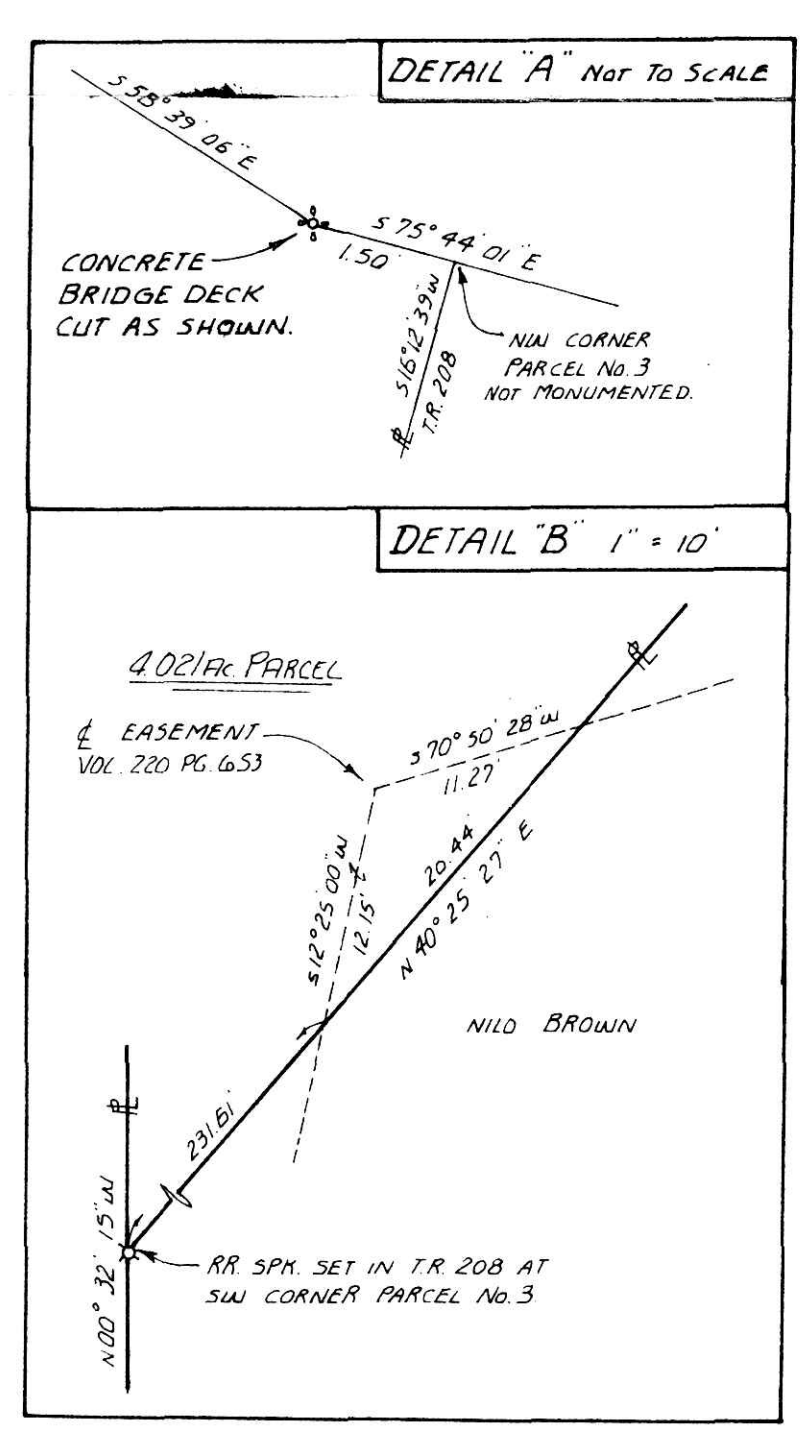
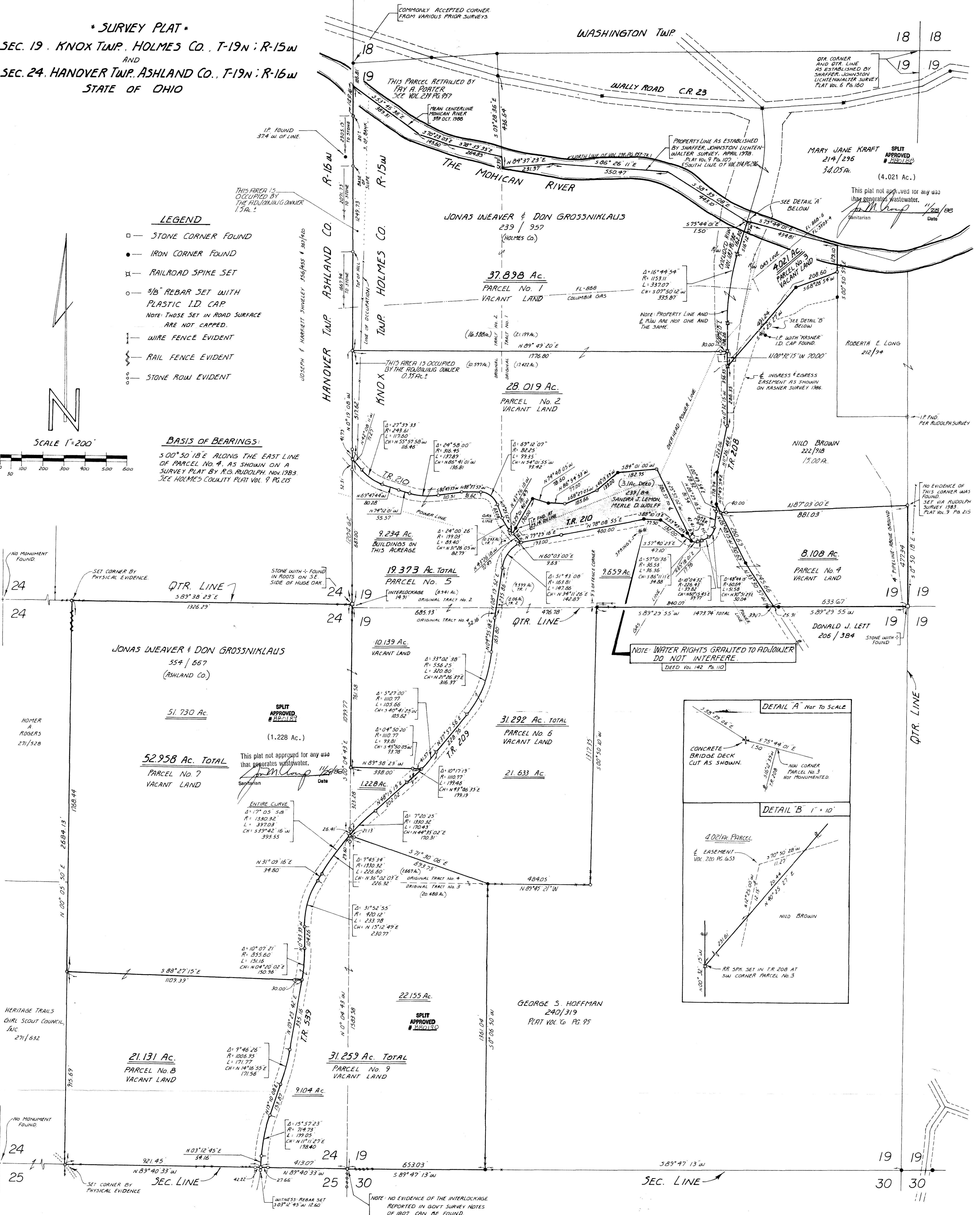
SEC. 19, KNOX TWP., HOLMES CO., T-19N ; R-15W
AND
SEC. 24, HANOVER TWP., ASHLAND CO., T-19N ; R-16W
STATE OF OHIO

161997

- LEGEND**
- — STONE CORNER FOUND
 - — IRON CORNER FOUND
 - ⊗ — RAILROAD SPIKE SET
 - — 5/8" REBAR SET WITH PLASTIC I.D. CAP
 - NOTE: THOSE SET IN ROAD SURFACE ARE NOT CAPPED.
 - — WIRE FENCE EVIDENT
 - — RAIL FENCE EVIDENT
 - — STONE ROW EVIDENT



BASIS OF BEARINGS:
S 00° 30' 18" E ALONG THE EAST LINE OF PARCEL No. 4, AS SHOWN ON A SURVEY PLAT BY R.G. RUDOLPH, NOV. 1983. SEE HOLMES COUNTY PLAT VOL. 9, PG. 215



TOTAL AREA SURVEYED
HOLMES COUNTY DEED VOL. 239 PG. 957 = 152.094 Ac.
ASHLAND COUNTY DEED VOL. 554 PG. 667 = 81.965 Ac.
TOTAL = 234.059 Ac.

UTILITY LINES ARE SHOWN FOR GENERAL INFORMATION ONLY.
EXACT LOCATIONS CAN ONLY BE DETERMINED BY THE UTILITY COMPANY.

161997
DEC 5 1988
Recorded DEC 6 1988
PLAT No. 13
At 4:17 PM
Holmes Co. Ohio Plat No. 21-00
Pg. 36
Richard Thaven

Deed Vol 241 Pages 477, 481, 484, 489, 492, 496, 501, & 504