

KILLBUCK TOWNSHIP
HOLMES COUNTY, OHIO
SECTION 24, T-8N, R-7W



LEGEND
 Stone Found
 Iron Pin Found
 Iron Pin Set - 5/8" x 30" Rebar w/ Yellow Cap Marked "LONG-7115"
 (I.P.'s in Road Have No Caps)

References: Survey Record Vol. 2, Pg 113
 " " " " 3, Pg 365
 " " " " 4, Pg 211
 " " " " 4, Pg 257
 " " " " 4, Pg 275
 " " " " 4, Pg 177
 Deeds As Shown
 Tax Maps

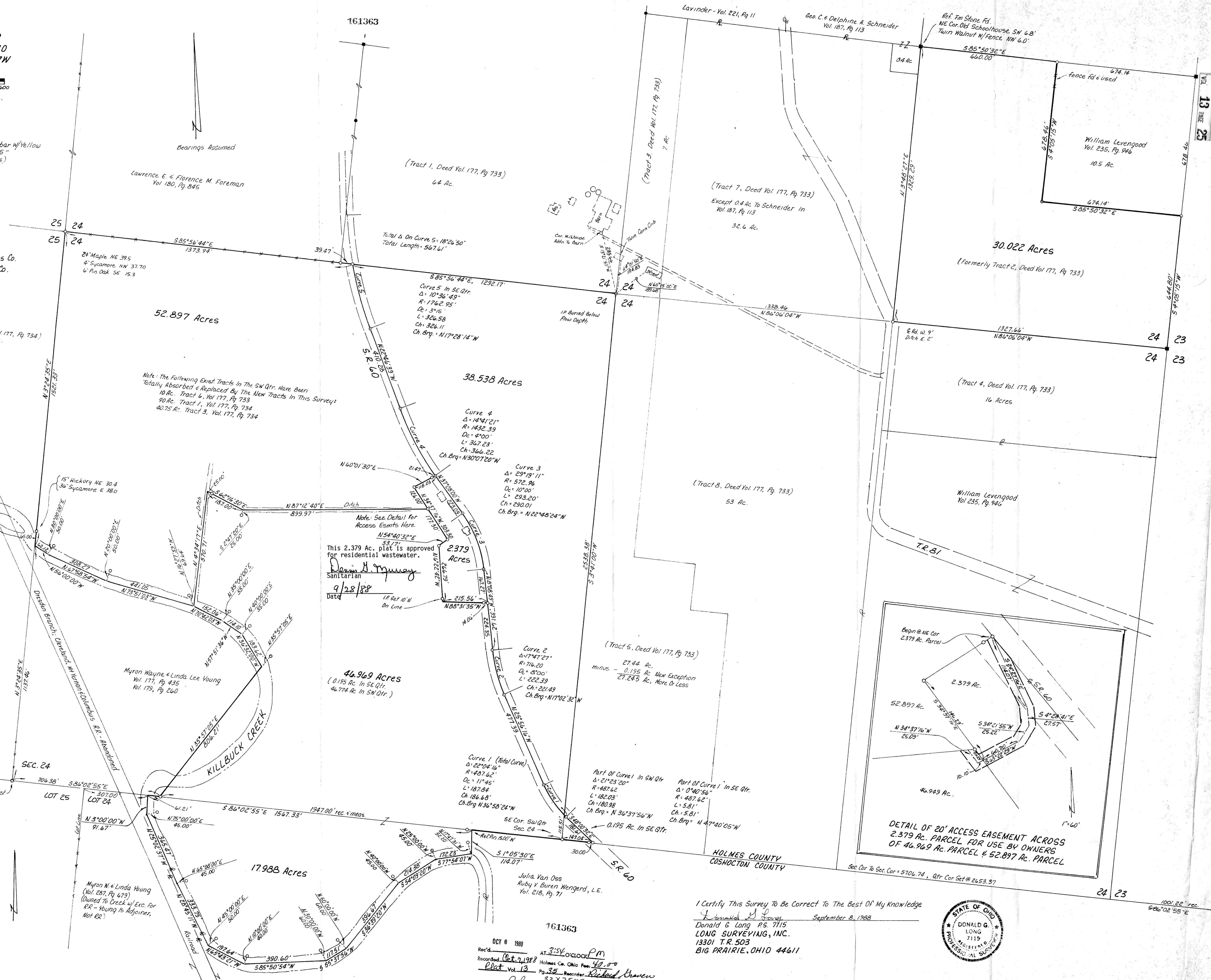
Surveyed For: FLINTSTONE FARMS, INC.
 Deed Vol. 177, Pg 727 & 731 - Holmes Co.
 Deed Vol. 285, Pg. 944 - Coshocton Co.

Acres Breakdown From Exist Tracts To New Tracts

New Parcels	Existing Tracts in SW Qtr		SE Qtr	
	(40.75)	(90)	(10)	(27.44)
38.538	7.017	21.521	10.000	0
52.897	0	52.897	0	0
46.969	32.762	14.012	0	0.195
2.379	1.063	1.316	0	0

CLARK TOWNSHIP
COSHOCTON COUNTY, OHIO
LOT 24, 2nd Qtr. T-7N, R-7W

References: Tax Map, Deeds As Shown
 Bearings Assumed



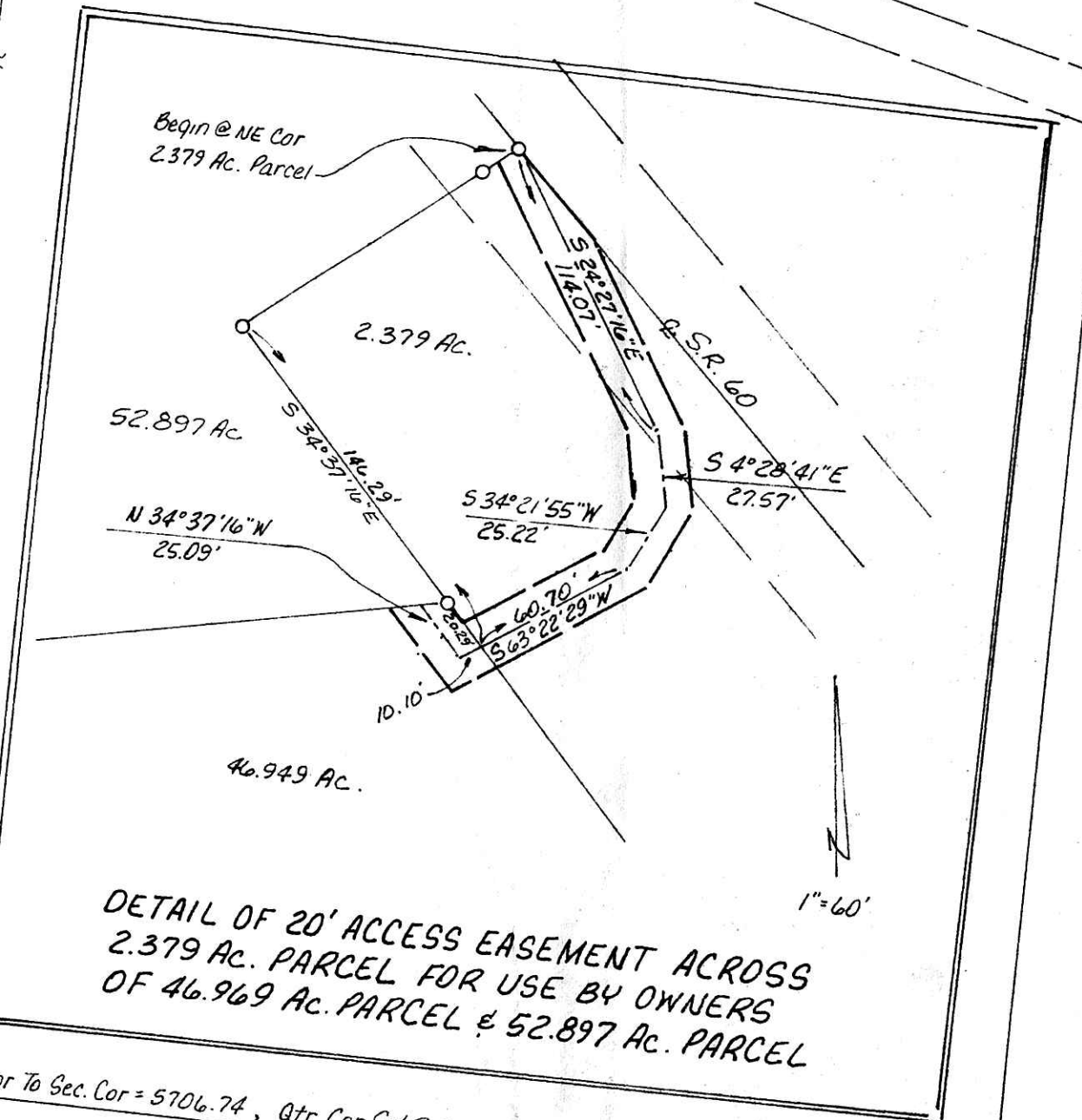
(Tract 1, Deed Vol. 177, Pg 733)
 6.4 Ac.

52.897 Acres

38.538 Acres

46.969 Acres
 (0.195 Ac. in SE Qtr.
 46.774 Ac. in SW Qtr.)

17.988 Acres



I Certify This Survey To Be Correct To The Best Of My Knowledge
 Donald G. Long, P.S. 7115
 LONG SURVEYING, INC.
 13301 T.R. 503
 BIG PRAIRIE, OHIO 44611



OCT 6 1988
 Rec'd. AT 2:56 o'clock PM
 Recorded Plat 1388
 Holmes Co. Ohio Fees 40.00
 Plat Vol. 13 Pg. 35
 32 X 25 X 5
 Richard Brown