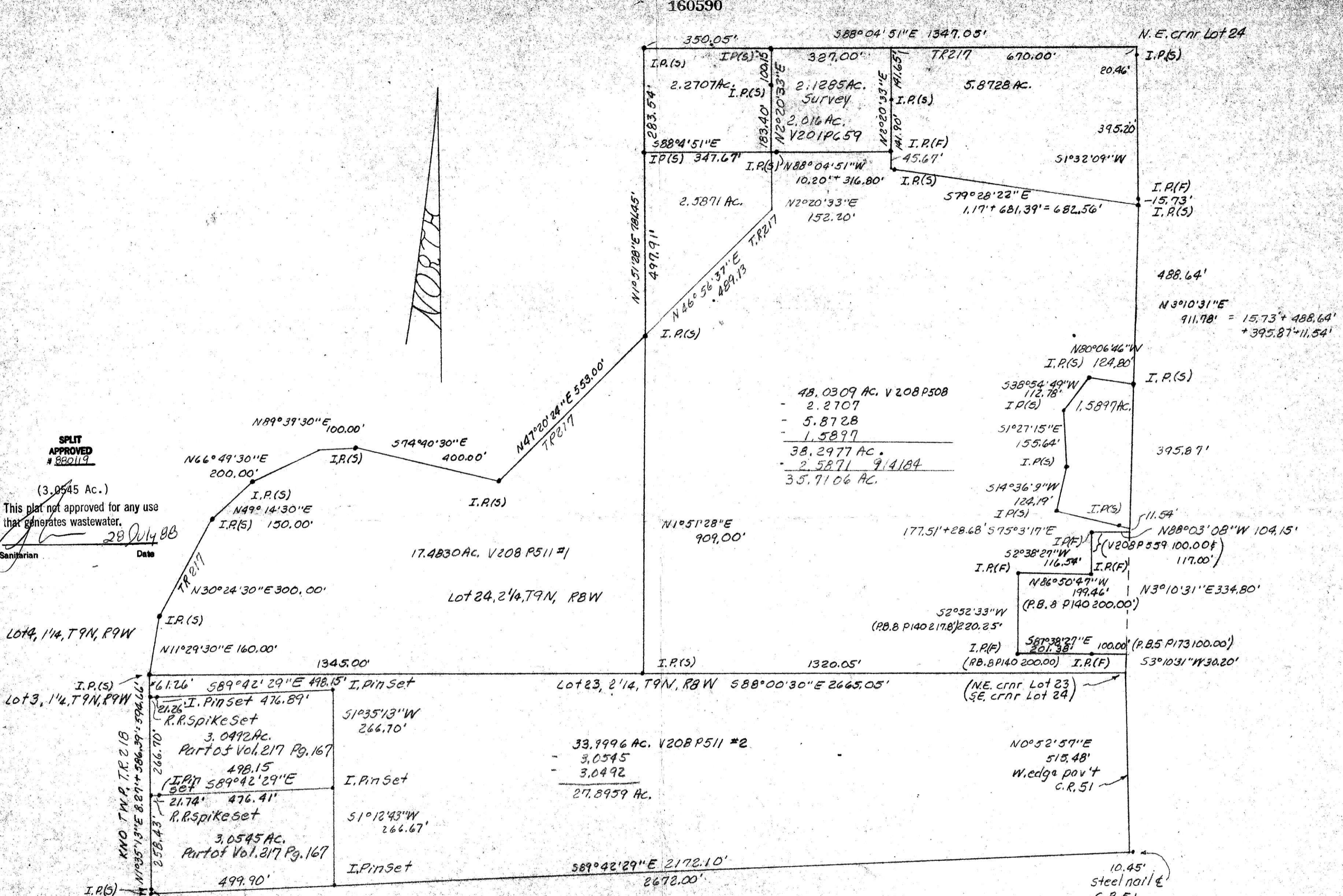


160590

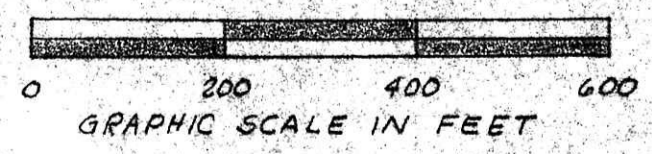


SPLIT APPROVED
880119

(3.0545 Ac.)
This plat not approved for any use that generates wastewater.
Sanitarian Date
[Signature] 28 July 88

48.0309 AC. V 208 P 508
- 2.2707
- 5.8728
- 1.5897
38.2977 AC.
2.5871 9/4/84
35.7106 AC.

33.9996 AC. V 208 P 511 #2
- 3.0545
- 3.0492
27.8959 AC.



211181
914184



PLAT OF A SURVEY OF
GLASGO FARM
KNOWN as part of Lots 23 & 24
2nd Qtr., T9N, R8W, of Monroe
Twp., Hol. Co., Ohio.
Robert L. Kasner P.S., 5193
P.E. 28820

160590
JUL 29 1988
Recorded AUG 1 1988
Plat Vol. 13 27 11
15x19x5
Richard Hansen