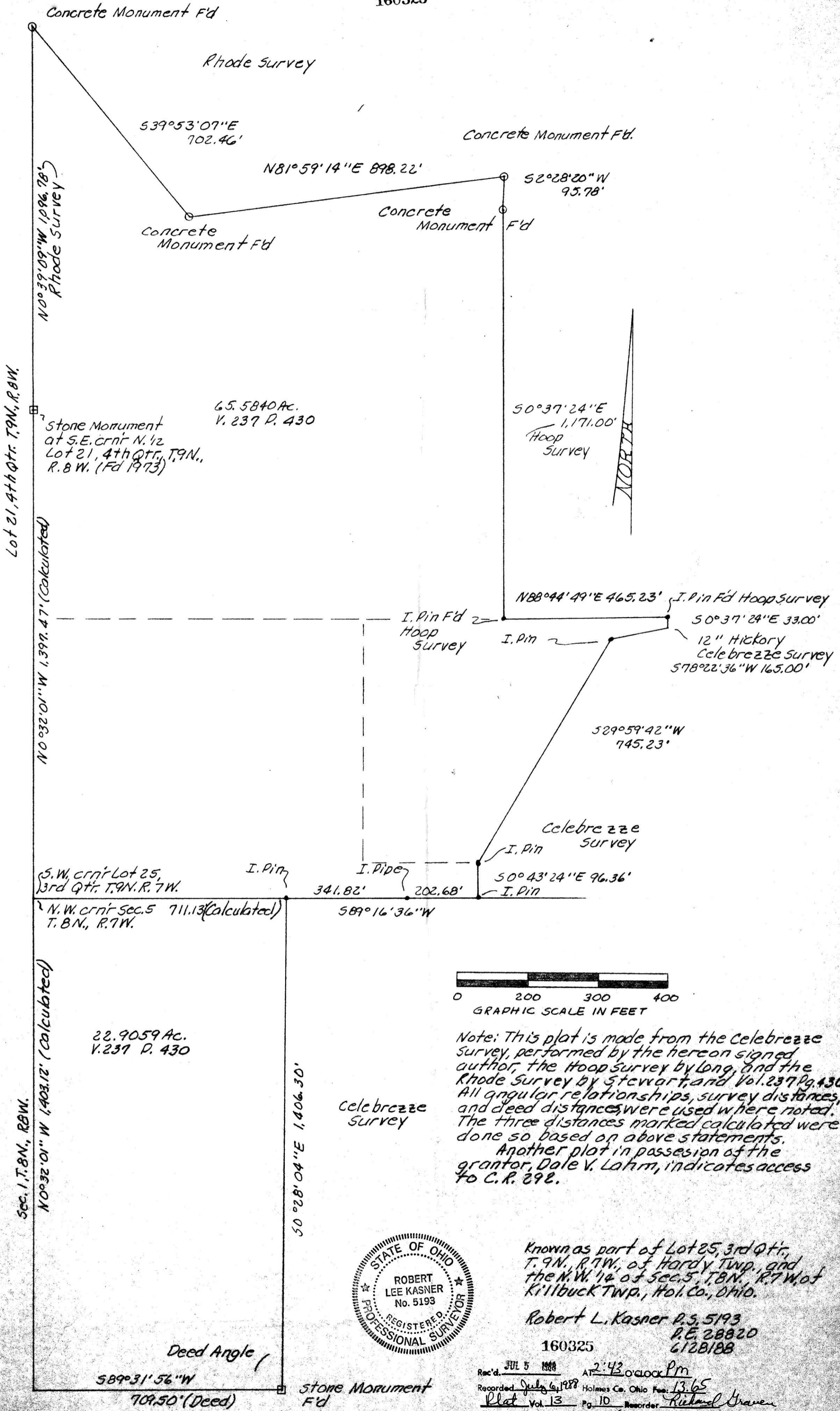


160325



Lot 21, 4th Qtr. T.9N., R.8W.

Stone Monument at S.E. crnr N. 1/2 Lot 21, 4th Qtr., T.9N., R.8W. (Fd 1973)

65.5840 Ac. V. 237 P. 430

S.W. crnr Lot 25, 3rd Qtr. T.9N. R.7W. N.W. crnr Sec. 5 711.13 (Calculated) T.8N., R.7W.

22.9059 Ac. V. 237 P. 430

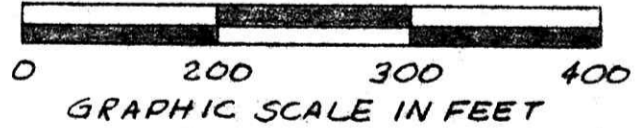
Sec. 1, T.8N., R.8W.

N0°32'01\"/>

50°28'04\"/>

Deed Angle 589°31'56\"/>

stone Monument F'd



Note: This plat is made from the Celebrezze survey, performed by the hereon signed author, the Hoop Survey by Long, and the Rhode Survey by Stewart, and Vol. 237 Pg. 430. All angular relationships, survey distances, and deed distances were used where noted. The three distances marked calculated were done so based on above statements. Another plat in possession of the grantor, Dale V. Lahm, indicates access to C.R. 292.



Known as part of Lot 25, 3rd Qtr., T.9N., R.7W., of Hardy Twp., and the N.W. 1/4 of Sec. 5, T.8N., R.7W., of Killbuck Twp., Hol. Co., Ohio.

Robert L. Kasner P.S. 5193
P.E. 28820
6128188

160325
Rec'd. JUL 5 1988 AT 2:43 o'clock Pm
Recorded July 6, 1988 Holmes Co. Ohio Fee: 13.65
Plat Vol. 13 Pg. 10 Recorder Richard Graven
21 XBXV