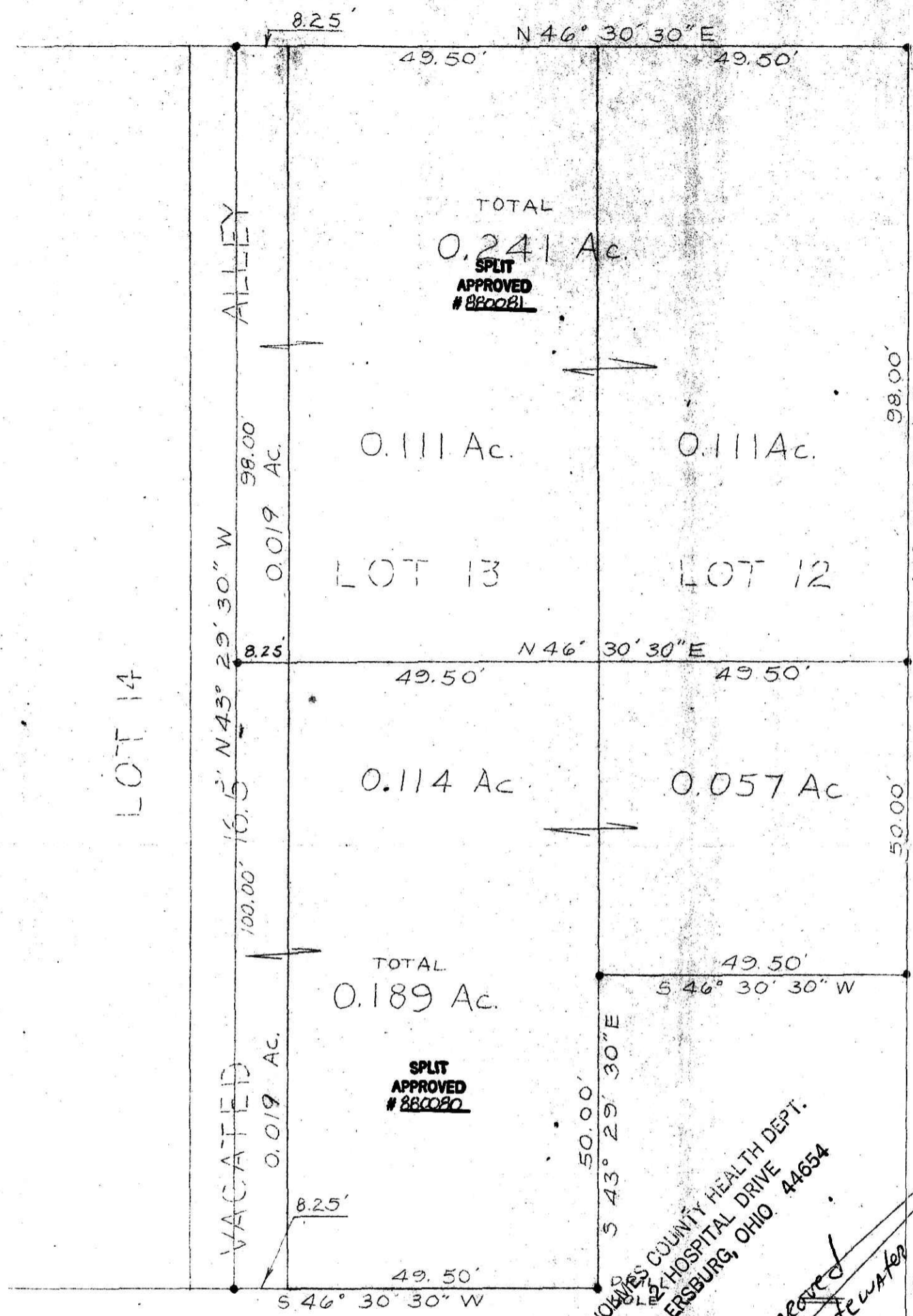


LOT 11

160040

16.5' ALLEY



TOTAL
0.241 Ac.
SPLIT
APPROVED
880081

0.111 Ac.

0.111 Ac.

LOT 13

LOT 12

0.114 Ac.

0.057 Ac.

TOTAL
0.189 Ac.
SPLIT
APPROVED
880080

HOLMES COUNTY HEALTH DEPT.
124 HOSPITAL DRIVE
MILLERSBURG, OHIO 44654

This Plat is Approved
for EXISTING WASTEWATER
USES
June 88

MARKET ST 66

LOT 5

MAIN ST 66

SET 1" x 30" RE-BAR

PLAT OF A TRACT OF LAND
FOR
BEN BEACHY
IN
LOTS 12 & 13
VILLAGE OF FARMERSTOWN
SECTION 12
RANGE 5W, TOWNSHIP 8N
CLARK TOWNSHIP
HOLMES COUNTY
OHIO

160040

SCALE 1" = 20'

JULY 27, 1979

Rec'd JUN 8 1988

AT 11:08 o'clock AM

Recorded JUN 9 1988

Holmes Co. Ohio Fee 8.25

Plat Vol. 13

pg. 3

Recorder Richard Hansen

REG SURVEYOR 414

Y. C. Stewart