

0 30 60 120

SCALE: 1" = 60'

- IRON PIN FOUND
- 5/8" REBAR WITH I.D. CAP SET
- I.D. CAP MARKED "BAKER 6938"

REFERENCES:

DEED VOL. 252 PAGE 612
 DEED VOL. 250 PAGE 647
 PLAT VOL. 12 PAGE 739
 PLAT VOL. 5 PAGE 600
 PLAT VOL. 8 PAGE 877

BEARINGS FROM PLAT VOL. 10 PAGE 390

177098

WALNUT CREEK TOWNSHIP
 S.E. QTR. FRACTIONAL SECTION 13
 T-9N; R-5W, HOLMES COUNTY, OHIO

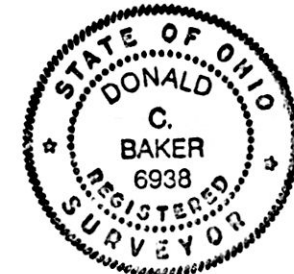
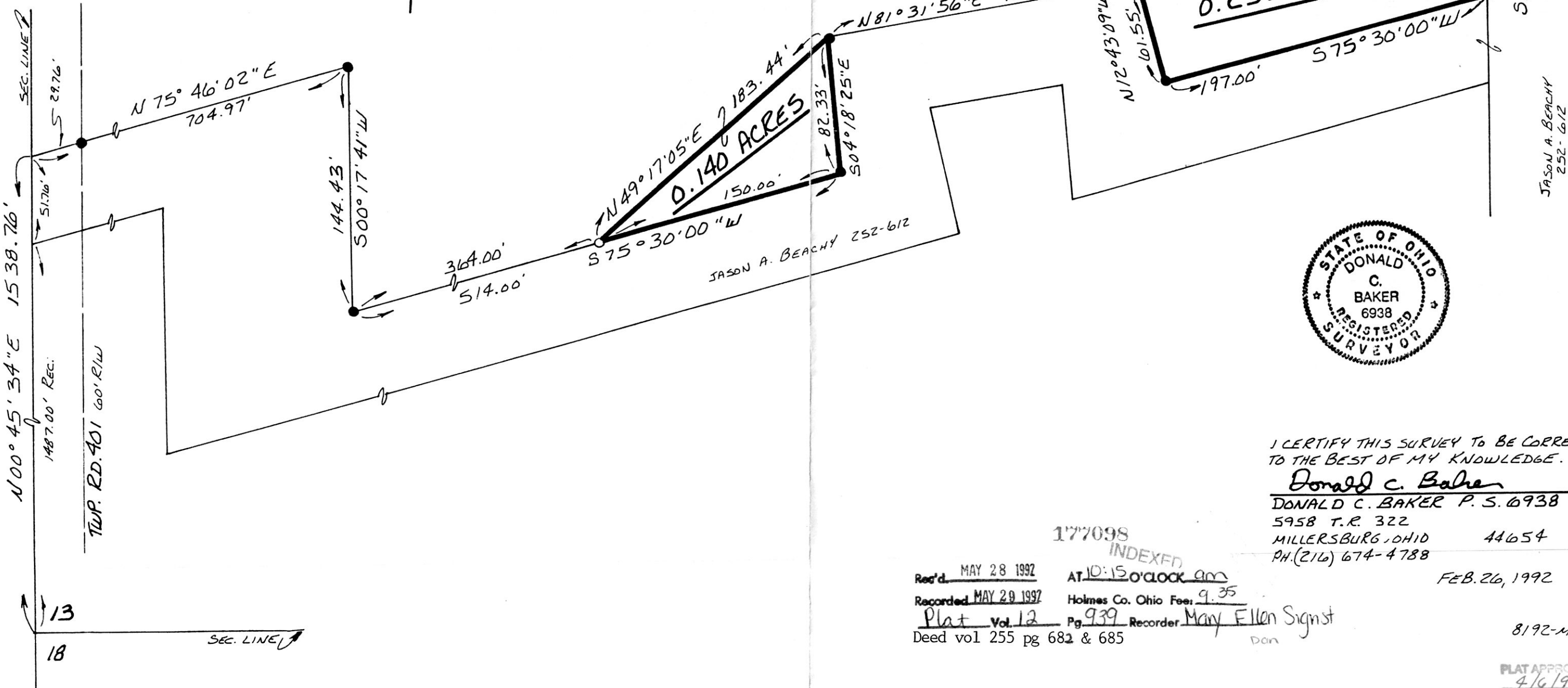
These 0.140 and 0.256 acre parcels are not approved for any use that generates residential wastewater.

Sanitarian John D. [Signature] Date 3/4/92

SPLIT APPROVED # 920056

SPLIT APPROVED # 920057

pl 9.35



I CERTIFY THIS SURVEY TO BE CORRECT TO THE BEST OF MY KNOWLEDGE.

Donald C. Baker
 DONALD C. BAKER P. S. 6938
 5958 T.R. 322
 MILLERSBURG, OHIO 44654
 PH. (216) 674-4788

177098 INDEXED
 Rec'd MAY 28 1992 AT 10:15 O'CLOCK AM
 Recorded MAY 29 1992 Holmes Co. Ohio Fee: 9.35
 Plat Vol. 12 Pg. 939 Recorder Mary Ellen Signst
 Deed vol 255 pg 682 & 685 Dan

FEB. 26, 1992
 8192-MLS

PLAT APPROVED 4/6/92B

VOL 12 PAGE 939