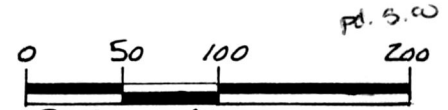


RIPLEY TOWNSHIP
 S.E. QTR. SECTION 5
 T.17N; R.14W
 HOLMES COUNTY, OHIO

176960

SPLIT
 APPROVED
 # 920092



- SCALE: 1" = 100'
- ▲ R.R. SPIKE FOUND
 - IRON PIN FOUND
 - △ R.R. SPIKE SET
 - 5/8" REBAR WITH I.D. CAP SET
 - I.D. CAP MARKED "BAKER 6938"

REFERENCES:

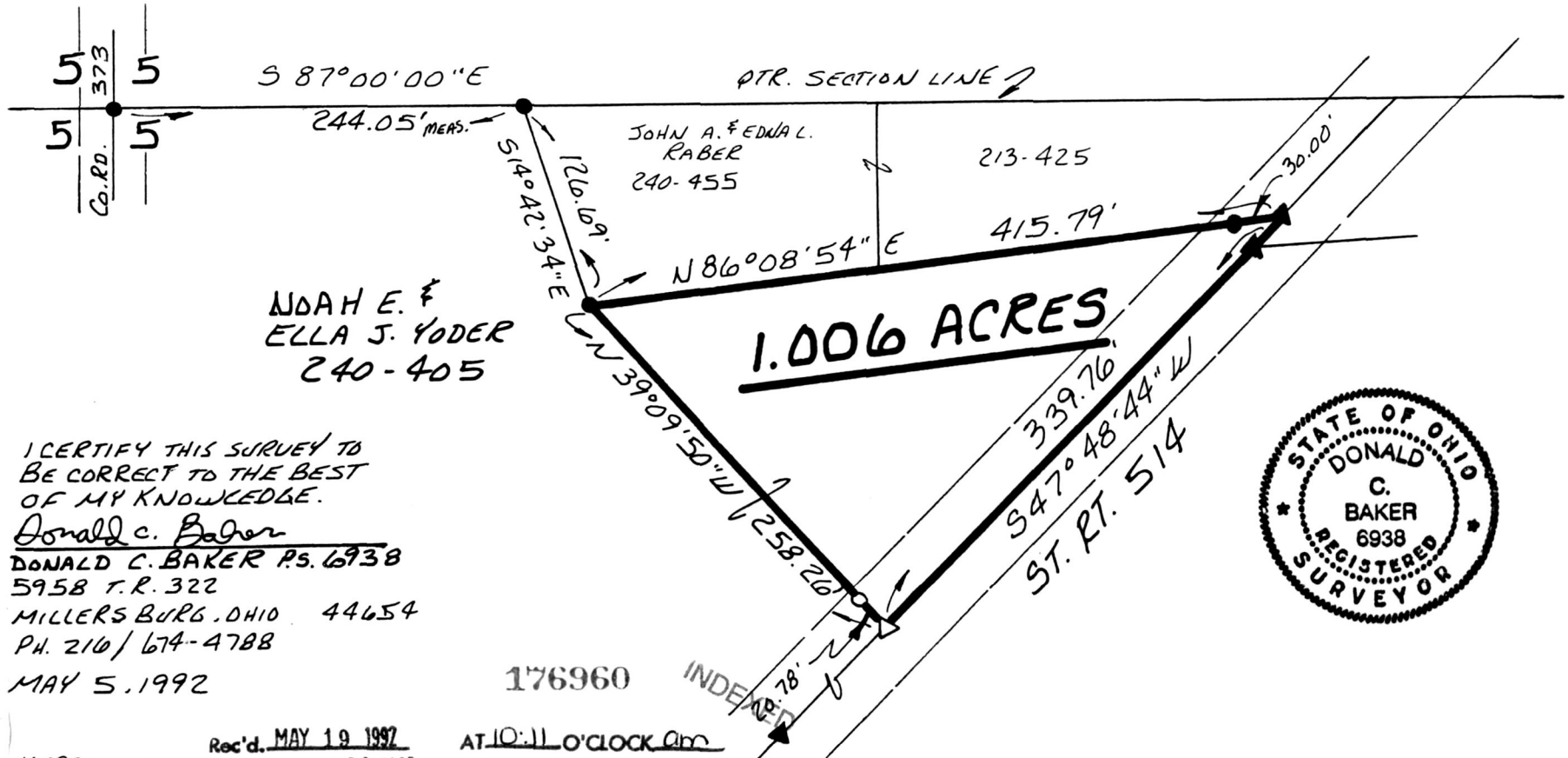
This 1.006 acre parcel is not approved for any use that generates wastewater.

PLAT VOL. 12 PAGE 73
 PLAT VOL. 8 PAGE 765
 PLAT VOL. 10 PAGE 240
 PLAT VOL. 5 PAGE 8
 PLAT VOL. 12 PAGE 89
 DEED VOL. 240 PAGE 405

Sanitarian

5/19/92
 Date

BEARINGS FROM PLAT VOL. 12 PAGE 73

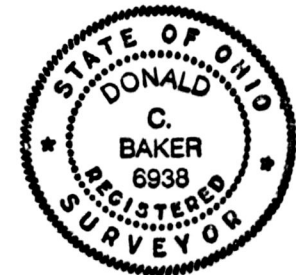


JOHN A. & EDNA L. RABER
 240-455

WDAH E. & ELLA J. YODER
 240-405

I CERTIFY THIS SURVEY TO BE CORRECT TO THE BEST OF MY KNOWLEDGE.

Donald C. Baker
 DONALD C. BAKER P.S. 6938
 5958 T.R. 322
 MILLERSBURG, OHIO 44654
 PH. 216/674-4788
 MAY 5, 1992



VOL 12 PAGE 932

16892-MLS

Rec'd. MAY 19 1992
 Recorded MAY 20 1992

AT 10:11 O'CLOCK AM
 Holmes Co. Ohio Fee: 5.⁰⁰

Plat Vol. 12 Pg. 932 Recorder Mary Ellen Signst
 Deed vol 255 pg 549 John A Raber

PLAT APPROVED
 5/19/92 B