

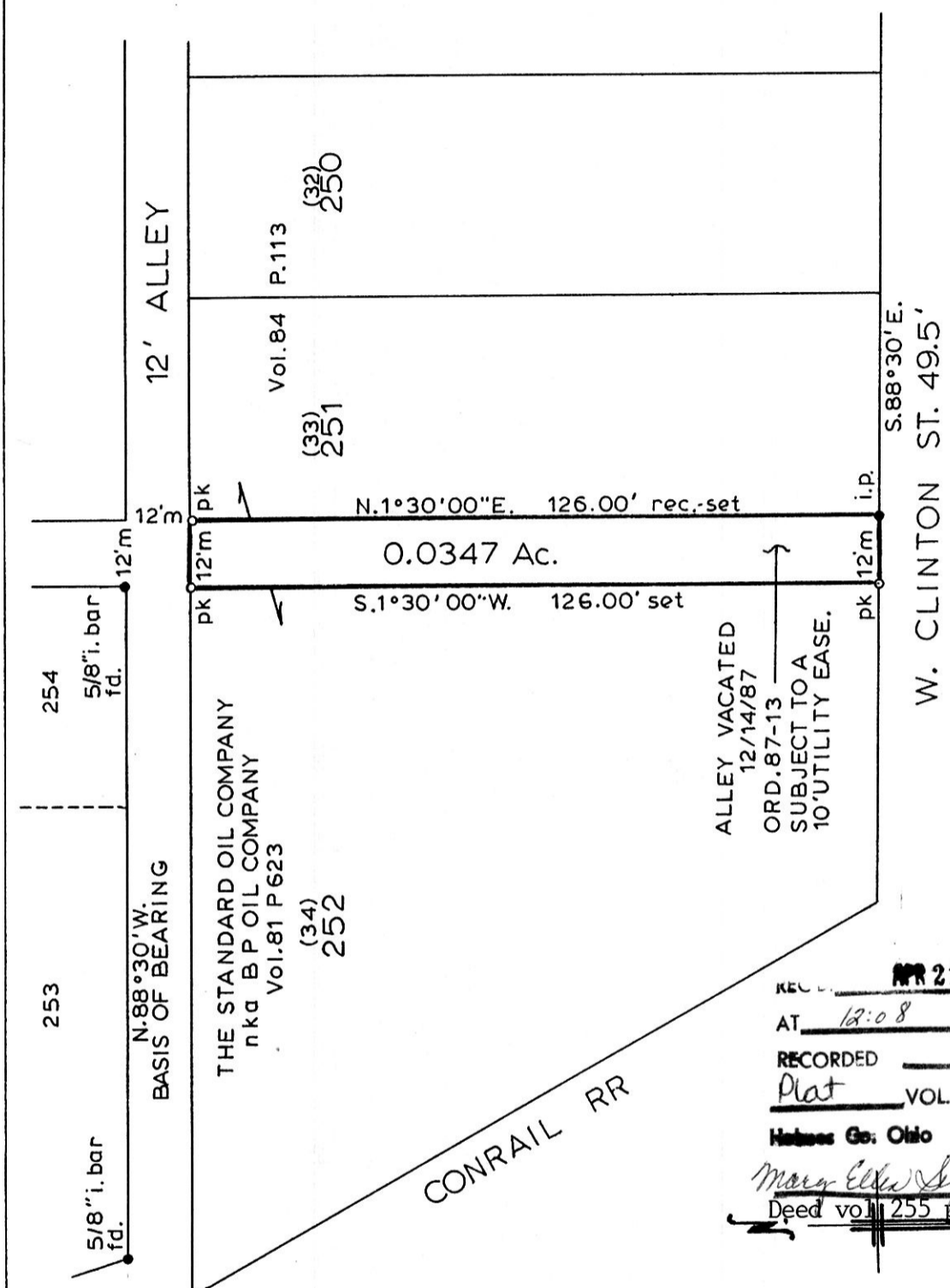


CAMPBELL & ASSOCIATES, INC.
Surveying • Engineering

BOUNDARY SURVEY

Ohio WATS (800) 233-4117
FAX (216) 535-7571

VOL 12 PAGE 916

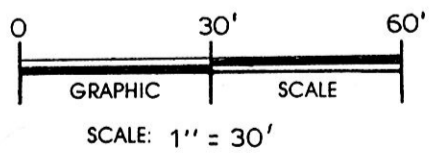


176540

REC. APR 21 1992 INDEXED
 AT 12:08 O'CLOCK PM
 RECORDED APR 22 1992
 Plat VOL 12 PG. 916
 Holmes Co. Ohio Fee: \$5.00
 Mary Ellen Spriet Recorder
 Deed vol 255 pg 262 Midland Title



CAMPBELL & ASSOCIATES, INC.
Surveying - Engineering
315 Tuscarawas St., West Suite 301
Canton, Ohio 44702
(216) 455-3707
FAX (216) 455-0093



PLAT OF A SURVEY
VACATED ALLEY
PART OF IRVINE & ENOS 2nd ADDITION (P. Vol. 1 Pg. 19)
VILLAGE OF MILLERSBURG
Holmes County, Ohio
November 29, 1991

I declare that this Survey is true and correct
to the best of my knowledge and belief,

Jay T. Dunlap

PLAT APPROVED
4/13/92 B



Jay T. Dunlap P.L.S. 6250