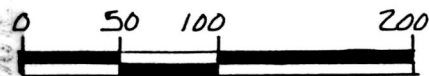


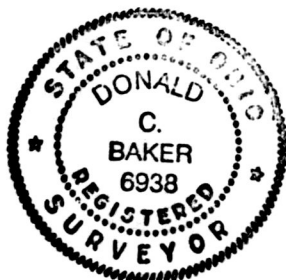
VOL 12 PAGE 871

PRAIRIE TOWNSHIP  
S.W. QTR. SECTION 29  
T-14-N; R-13W  
HOLMES COUNTY, OHIO



SCALE: 1" = 100'

- IRON PIN FOUND
- 5/8" REBAR WITH I.D. CAP SET
- I.D. CAP MARKED "BAKER 6938"



I CERTIFY THIS SURVEY TO BE CORRECT TO THE BEST OF MY KNOWLEDGE.

Donald C. Baker 2/13/92

DONALD C. BAKER P.S. 6938

5958 TR 322  
MILLERSBURG OHIO 44654  
PH. (216) 674-4788

5392-MLS

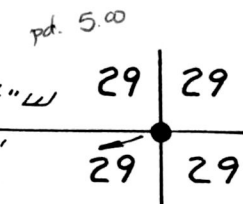
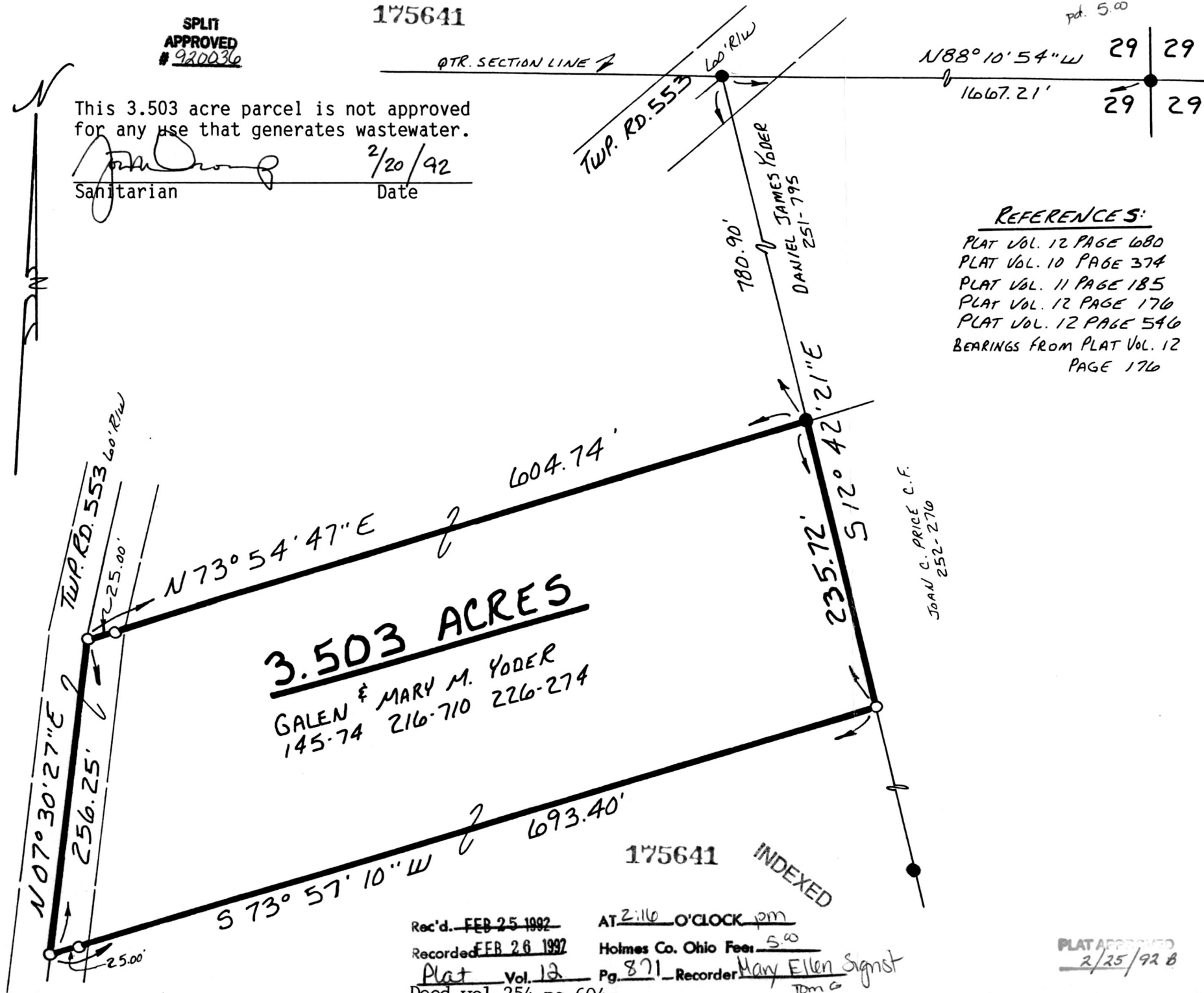
SPLIT APPROVED # 920036

175641

This 3.503 acre parcel is not approved for any use that generates wastewater.

[Signature] 2/20/92  
Sanitarian Date

QTR. SECTION LINE



**REFERENCES:**  
 PLAT VOL. 12 PAGE 680  
 PLAT VOL. 10 PAGE 374  
 PLAT VOL. 11 PAGE 185  
 PLAT VOL. 12 PAGE 176  
 PLAT VOL. 12 PAGE 546  
 BEARINGS FROM PLAT Vol. 12 PAGE 176

**3.503 ACRES**

GALEN & MARY M. YODER  
145-74 216-710 226-274

175641 INDEXED

Rec'd. FEB 25 1992 AT 2:16 O'CLOCK pm  
 Recorded FEB 26 1992 Holmes Co. Ohio Fees 5.<sup>00</sup>  
 Plat Vol. 12 Pg. 871 Recorder Mary Ellen Signst  
 Deed vol 254 pg 604 Tom G

PLAT APPROVED 2/25/92 B