

SCALE: 1" = 60'

● IRON PIN FOUND

○ 5/8" RE BAR WITH I.D. CAP SET
I.D. CAP MARKED "BAKER 6938"

REFERENCES:

PLAT VOL. 10 PAGE 328
PLAT VOL. 12 PAGE 406
DEED VOL. 248 PAGE 191
PLAT VOL. 2 PAGE 88
DEED VOL. 223 PAGE 238

BEARINGS FROM PLAT VOL. 12
PAGE 406

**WALNUT CREEK TOWNSHIP
1ST. QTR. LOT 1
T-9N1R-5W
HOLMES COUNTY, OHIO**

0.500 #I
This 0.500 #II acre parcel is not approved
for any use that generates wastewater.

[Signature] 12/18/91
Sanitarian Date

SPLIT
APPROVED
91020A

SPLIT
APPROVED
91020S

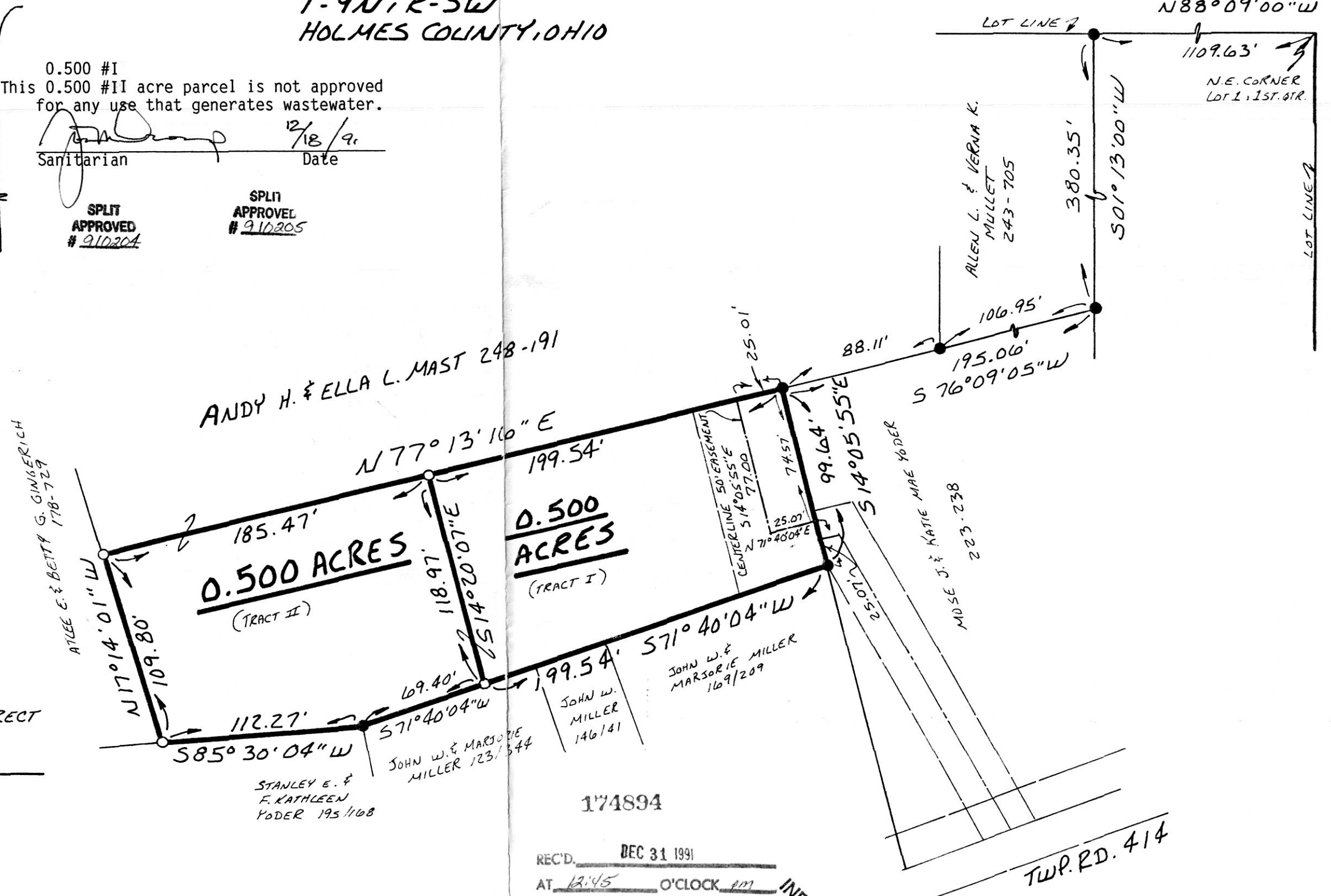


I CERTIFY THIS SURVEY TO BE CORRECT
TO THE BEST OF MY KNOWLEDGE.

Donald C. Baker
DONALD C. BAKER P.S. 6938
4321 T.R. 252
GLENMONT OHIO 44628

OCTOBER 30, 1991

1956-MLS



**0.500
ACRES**
(TRACT I)

**0.500
ACRES**
(TRACT II)

174894

REC'D. DEC 31 1991
AT 12:45 O'CLOCK PM
RECORDED JAN 02 1992
Plat VOL 12 PG. 826
Holmes Co. Ohio Fee: \$9.35
Mary Ellen Sigrist Recorder
Deed vol 254 pg 1 & 3

PLAT APPROVED
12/31/91

VOL 12 PAGE 826