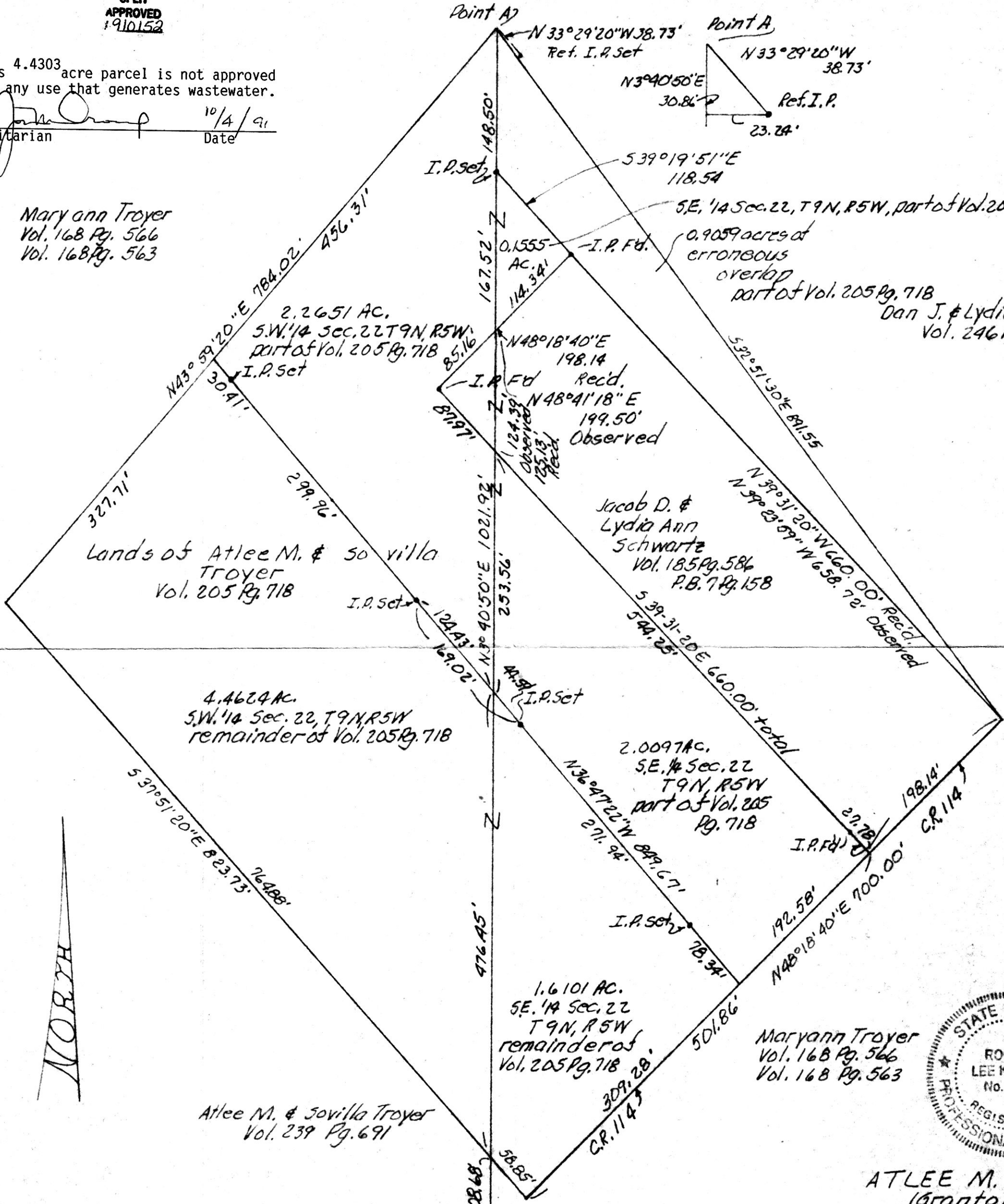


SPLIT APPROVED 1910152

This 4.4303 acre parcel is not approved for any use that generates wastewater.

Sanitarian *[Signature]* Date 10/4/91

Maryann Troyer Vol. 168 Pg. 566 Vol. 168 Pg. 563



Dan J. & Lydie Ann Yoder Vol. 246 Pg. 942

Jacob D. & Lydia Ann Schwartz Vol. 185 Pg. 586 P.B. 7 Pg. 158

Lands of Atlee M. & So villa Troyer Vol. 205 Pg. 718

4.4624 AC. S.W. 1/4 Sec. 22, T9N, R5W remainder of Vol. 205 Pg. 718

2.0097 AC. S.E. 1/4 Sec. 22 T9N, R5W part of Vol. 205 Pg. 718

1.6101 AC. S.E. 1/4 Sec. 22 T9N, R5W remainder of Vol. 205 Pg. 718

Maryann Troyer Vol. 168 Pg. 566 Vol. 168 Pg. 563

Atlee M. & So villa Troyer Vol. 239 Pg. 691

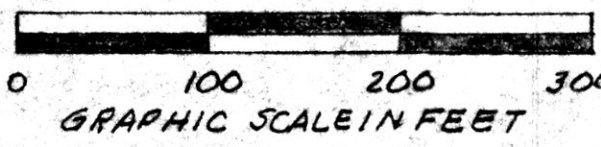
S.W. 1/4 Sec. 22, T9N, R5W 174002

S.E. 1/4 Sec. 22, T9N, R5W



ATLEE M. TROYER (Grantor) Known as part of the S.W. & S.E. 1/4s of Sec. 22, T9N, R5W of Walnut Creek Twp., Hol. Co., Ohio.

Robert L. Kasner R3593 RE. 28820 7/13/91



INDEXED
OCT 21 1991
AT 1:01 O'CLOCK PM
RECORDED OCT 22 1991
Plat VOL 12 PG 773
Holmes Co. Ohio Fee: 10.40
Recorder
Deed vol. 253 pg 180

PLAT APPROVED 10/11/91