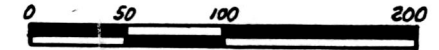


173624

RICHLAND TOWNSHIP
HOLMES COUNTY, OHIO
N.W. QTR., SEC. 15, T-8N, R-8W

VOL 12 PAGE 748

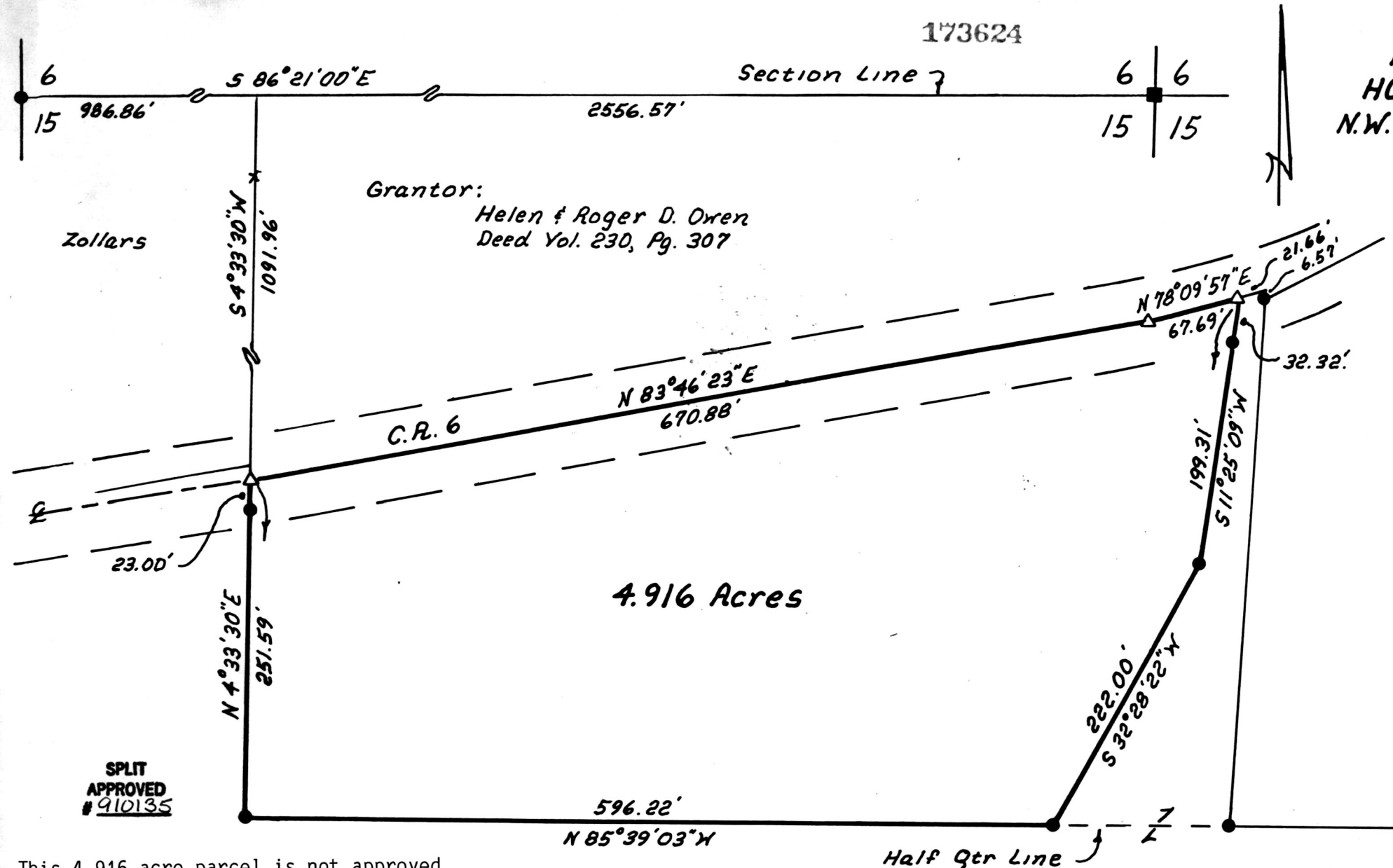


Scale 1" = 100'

- Stone Found
- Iron Pin Found
- △ R.R. Spike Set

Bearings Based On 1/2 Qtr Line
From Plat Vol. 6, Pg. 117

- References:
- Plat Vol. 6, Pg. 117
 - Plat Vol. 3, Pg. 70-B
 - Plat Vol. 12, Pg. 45



4.916 Acres

Half Qtr Line

SPLIT APPROVED #910135

This 4.916 acre parcel is not approved for any use that generates wastewater.

John D. Long 9/10/91
Sanitarian Date

Earl E. & Madeline Fraelich
Vol. 226, Pg. 668

173624

rec'd. SEP 12 1991 AT 4:00 O'CLOCK pm
Recorded SEP 13 1991 Holmes Co. Ohio Fee 5.00
Deed Vol. 12 Pg. 748 Recorder Mary Ellen Signost
Deed Vol 252 pg 847 Dan Mathie

INDEXED

I Certify This Survey To Be Correct To The Best Of My Knowledge

Donald G. Long August 29, 1991
Donald G. Long P.S. 7115
LONG SURVEYING, INC.
12524 C.R. 6
Killbuck, Ohio 44637



PLAT APPROVED 9/12/91

pg. 5-00