

pd \$5.00

Research Data:
 Deeds: 240/930 185/743 137/522
 240/932 204/773 190/776
 138/185 202/659 202/662

This plat not approved for any use that generates wastewater.

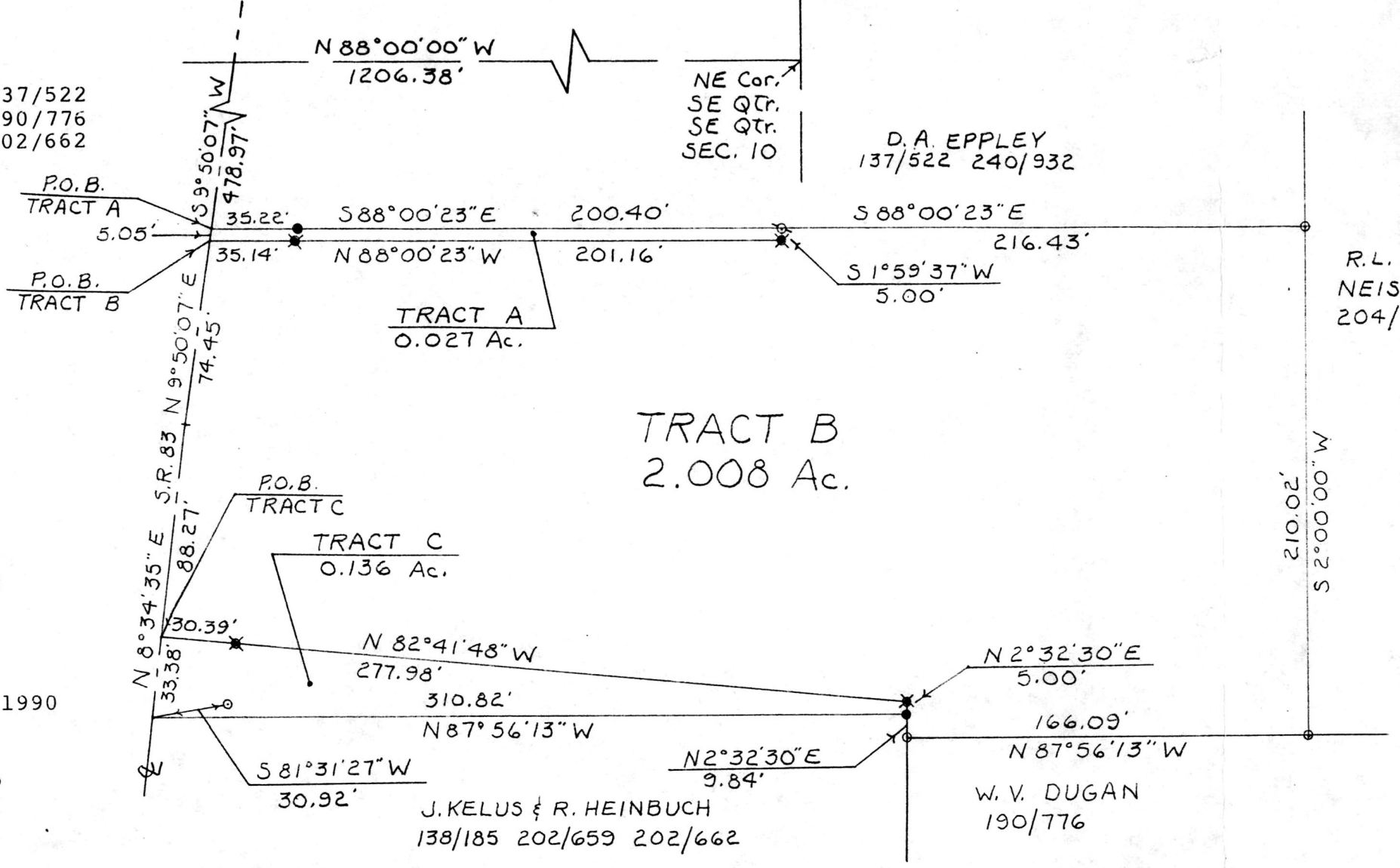
Dennis J. Murray 8/10/90
 Sanitarian Date

SPLIT APPROVED #900140

SPLIT APPROVED #900141

Boundary Survey for Charles Eppley in Section 10 Range 8W, Township 8N, Mechanic Township, Holmes County, Ohio

Scale: 1" = 60' June 22, 1990



NORTH BASED ON DEED 240/930

- ✱ = Set 3/4" X 30" Rebars with plastic caps
- ⊘ = Set 3/4" X 30" Pipe
- = Recovered 3/4" Pipes
- = Recovered 5/8" Steel Pins

Note: Tracts A & C to go to adjoiners.

VOL 12 PAGE 508

Prepared By
AMERICAN PRECISION SURVEYING
 450 S. 4th Street (614) 622-2783
 COSHOCTON, OHIO 43812

169018
 Deed Vol. 248 Pg. 434
 Rec'd AUG 27 1990 AT 3:29 PM
 Recorded AUG 28 1990 Holmes Co. Ohio Fee: \$5.00
 Plat Vol. 12 Pg. 508 Recorder Richard Craven



Bruce D. Eckelberry

R.P.S. No. 7103

PLAT APPROVED 8/17/90 B