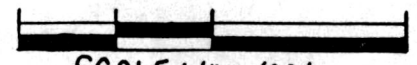


RICHLAND TOWNSHIP  
S.E. QTR. SECTION 8  
TWP. 8N RANGE 9W  
HOLMES COUNTY, OHIO

0 50 100 200



SCALE: 1" = 100'

- IRON PIN FOUND
- ⊗ DRILL HOLE SET
- 5/8" REBAR WITH I. D. CAP SET  
I. D. CAP MARKED "BAKER 6938"

BEARINGS FROM PLAT VOL. 12 PAGE 2

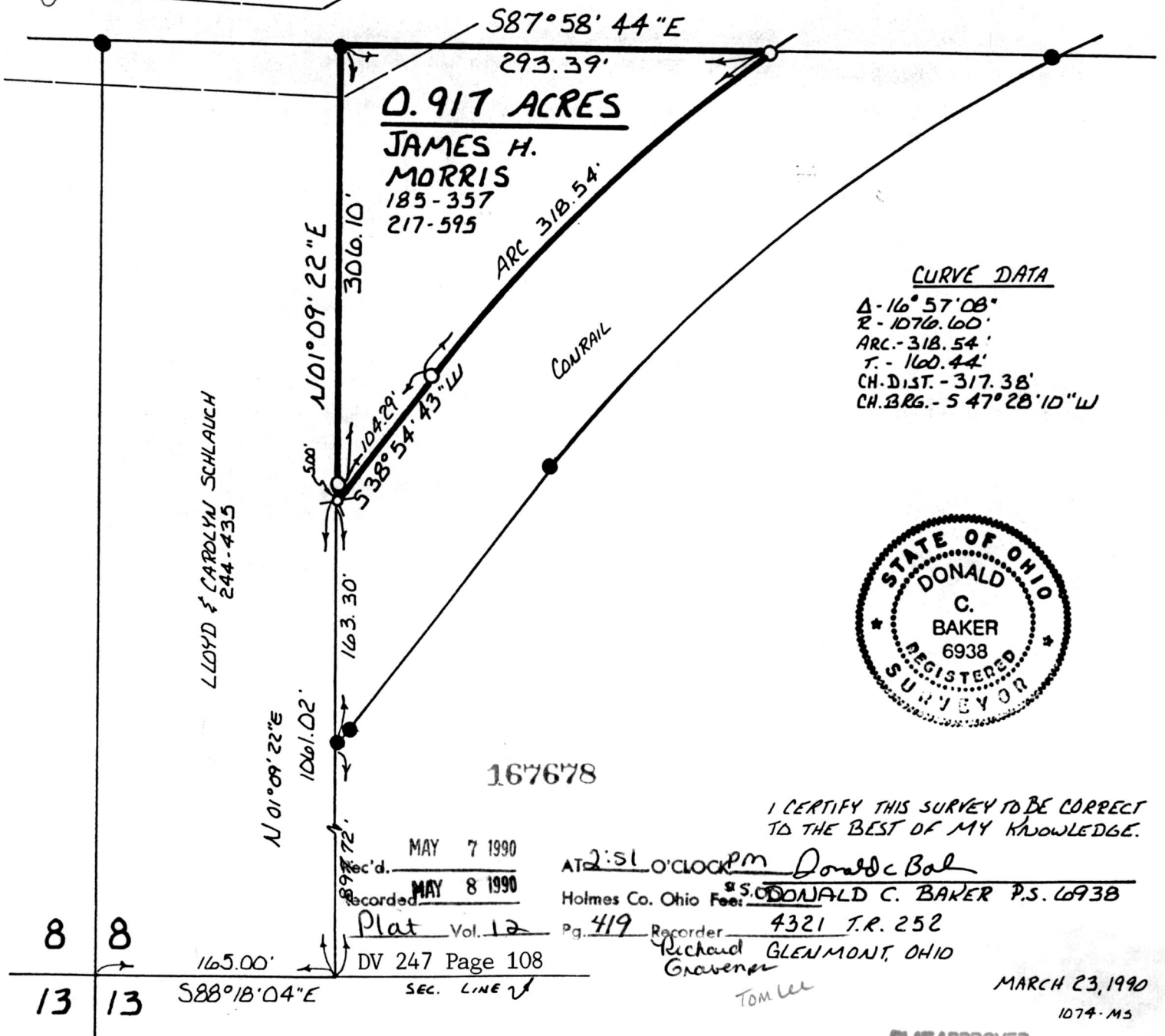
(0.917 Ac.)  
This plat not approved for any use  
that generates wastewater.

SPLIT  
APPROVED  
# 900047

*[Signature]* 5/2/90  
Sanitarian Date

JOSEPH JACOB  
167-452

T.R. 14 60' R/W



CURVE DATA

Δ - 16° 57' 08"  
 R - 1076.60'  
 ARC - 318.54'  
 T - 160.44'  
 CH. DIST. - 317.38'  
 CH. BRG. - 54° 28' 10" W



167678

I CERTIFY THIS SURVEY TO BE CORRECT  
TO THE BEST OF MY KNOWLEDGE.

AT 2:51 O'CLOCK PM *Donald C. Baker*  
 Holms Co. Ohio Fee: \$5.00 DONALD C. BAKER P.S. 6938  
 Recorder: 4321 T.R. 252  
 Richard GLENMONT, OHIO  
*Grainger*  
 TOM LU

MAY 7 1990  
 Recorded MAY 8 1990

Plat Vol. 12 Pg. 419  
 DV 247 Page 108  
 SEC. LINE ✓

8 8  
 13 13

165.00' S88°18'04"E

MARCH 23, 1990  
 1074-M5

PLAT APPROVED  
 5/7/90 B