

East Holmes Board of Education P.B. 2 Pg. 67
Vol. 135 Pg. 19

NORTH

I. Pipe Fd
Roy J. & Clara Beachy
Vol. 231 Pg. 92

SPLIT APPROVED # 900014

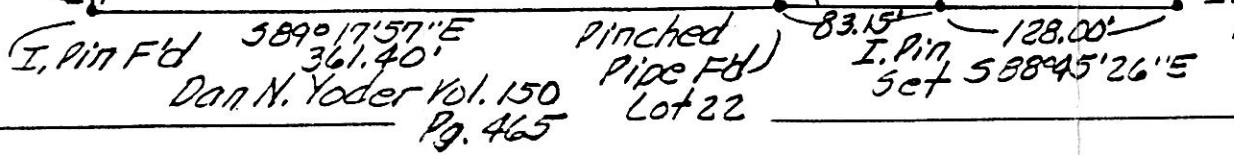
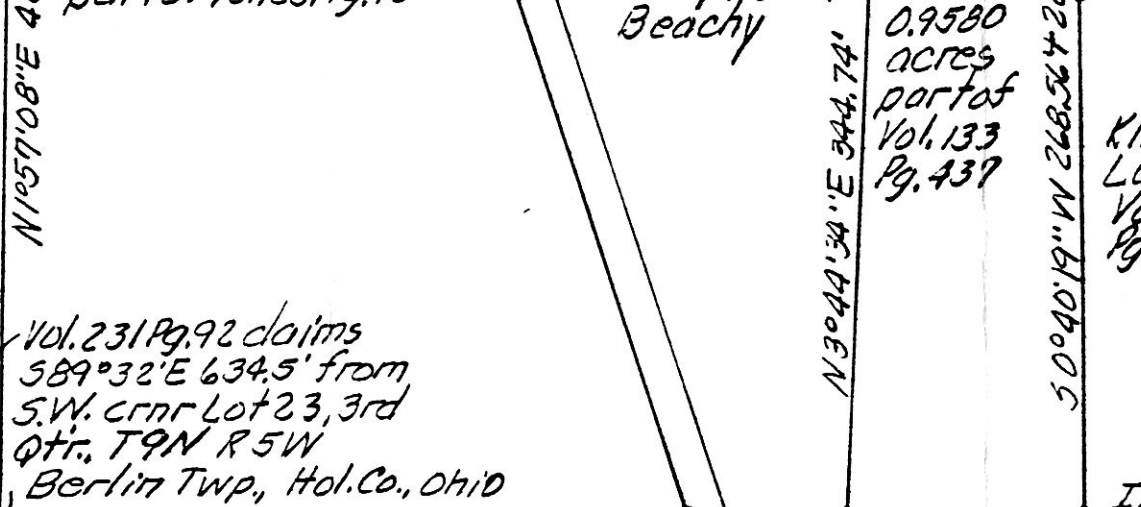
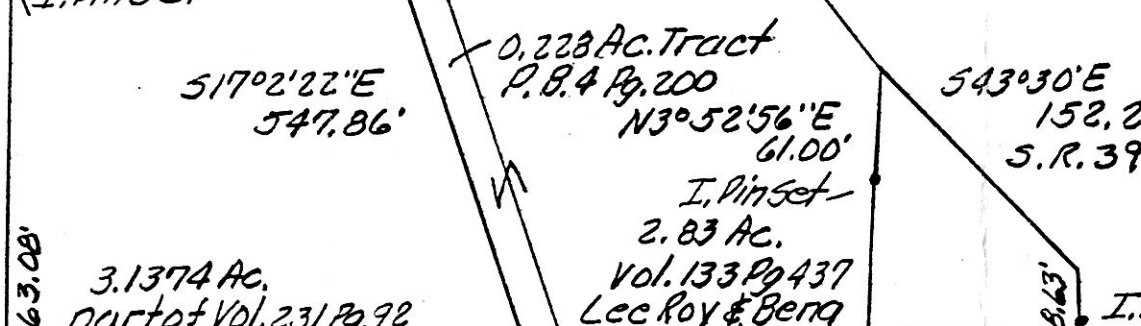
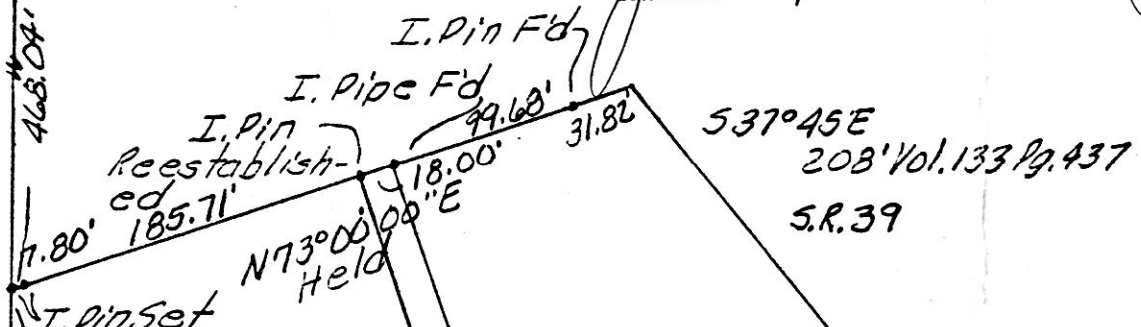
(0.9580 Ac.)
This plat not approved for any use that generates wastewater.

[Signature] 12/15/89
Sanitarian Date

(1.9846 Ac.)
This plat not approved for any use that generates wastewater.

[Signature] 2/9/90
Sanitarian Date

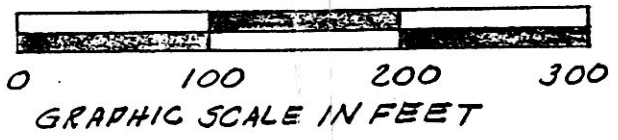
SPLIT APPROVED # 900013



SPLIT APPROVED # 900012

(3.1374 Ac.)
This plat not approved for any use that generates wastewater.

[Signature] 1/18/90
Sanitarian Date



Kline Lumber
Vol. 214
Pg. 728-730

PLAT OF A SURVEY FOR LEE ROY BEACHY
Known as part of Lot 23, 3rd Qtr., T9N, R5W of Berlin Twp., Hol. Co., Ohio.
Robert L. Kasner P.S. 5193
P.E. 28820
11/06/89

PLAT APPROVED 2/26/90 B

166790

Rec'd FEB 20, 1990 AT 3:23 O'CLOCK P.M.
FEB 21 1990
Holmes Co. Ohio Fee: 5.00

Deed Vol 12 P. 373 Recorder Richard Shuman
Deed Vol. 246 Page 259

261 & 263