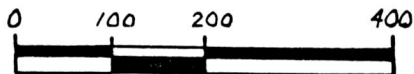


WASHINGTON TOWNSHIP
S.E. QTR. SECTION 34
TWP. 20N RANGE-15W
HOLMES COUNTY, OHIO



SCALE: 1" = 200'

- ▲ R.R. SPIKE FOUND
- △ R.R. SPIKE SET
- ♀ P.K. NAIL FOUND
- 5/8" REBAR WITH I.D. CAP SET
I.D. CAP MARKED "BAKER 6938"

BEARINGS FROM PLAT VOL. 11 PAGE 17

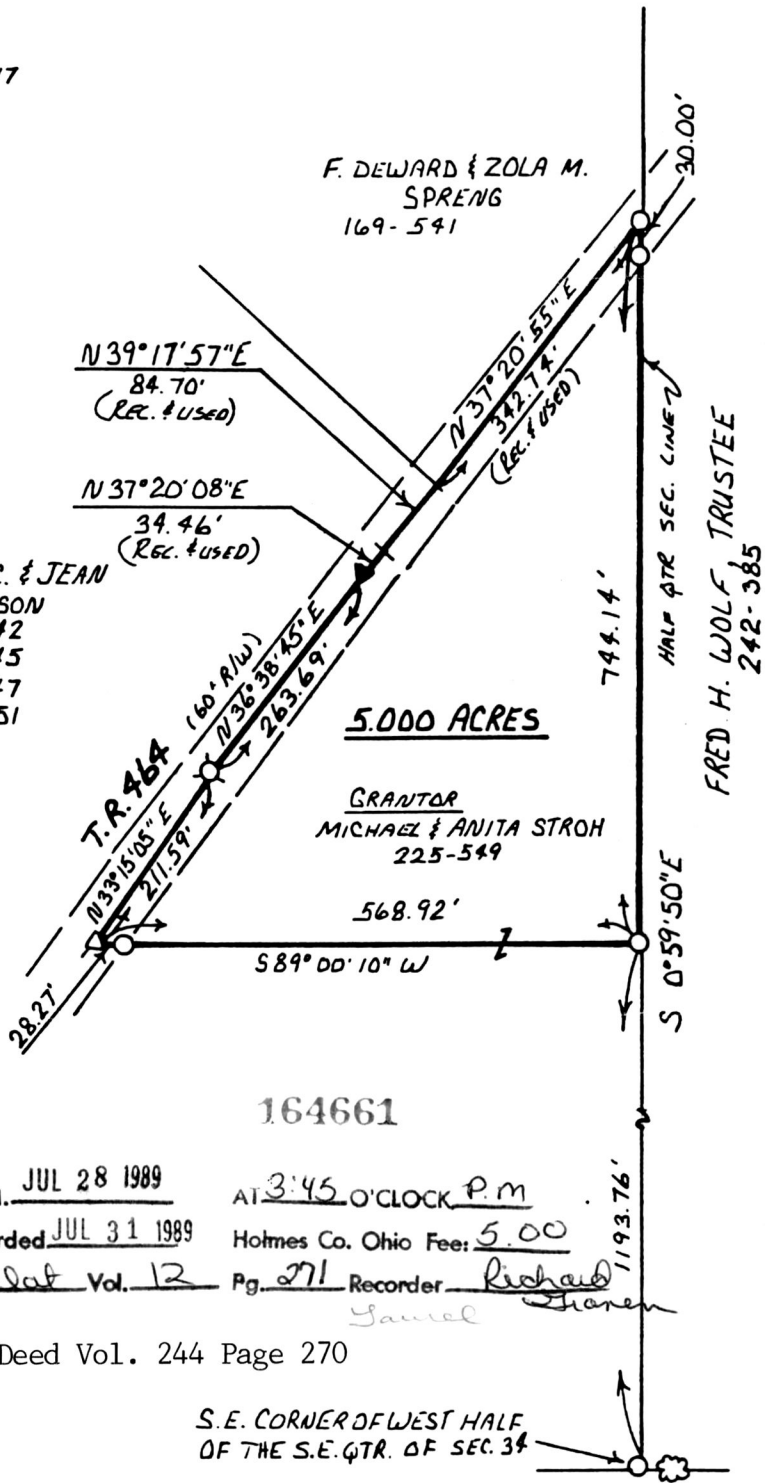


(5.000 Ac.)

This plat not approved for any use
that generates wastewater.

John Group 6/19/89
Sanitarian Date

ROBERT C. & JEAN
JOHNSON
178-242
178-245
178-247
178-251



164661

rec'd. JUL 28 1989

AT 3:45 O'CLOCK P.M.

Recorded JUL 31 1989

Holmes Co. Ohio Fee: 5.00

I CERTIFY THIS SURVEY TO BE CORRECT TO THE BEST OF MY KNOWLEDGE.

Plat Vol. 12 Pg. 271 Recorder: Richard Samuel Tharen

Donald C. Baker
DONALD C. BAKER P.S. 6938
4321 T.R. 252
GLENMONT, OH.

Deed Vol. 244 Page 270

JUNE 8, 1989

S.E. CORNER OF WEST HALF OF THE S.E. QTR. OF SEC. 34
IRON PIN SET ON WEST SIDE OF LARGE THORN TREE CALLED A MAPLE TREE ON PLAT VOL. 11 PAGE 17.