

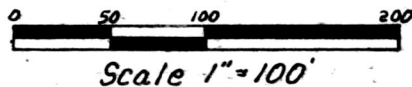
nd \$5.00

VOL 12 PAGE 269

164639

# MONROE TOWNSHIP HOLMES COUNTY, OHIO LOT 20, 1ST QTR., T-9N, R-8W

(0.728 Ac.)



This plat not approved for any use  
that generates wastewater.

Dennis B. Murray 7/17/89  
Sanitarian Date  
Grantor:

Charles V. & Geneva I. Steele  
Deed Vol. 238, Pg. 904

- Iron Pin Found
- Iron Pin Set - 5/8" Rebar With Yellow Cap Marked "LONG SURVEYING INC"

Bearings Based On Plat Vol. 12, Pg. 36

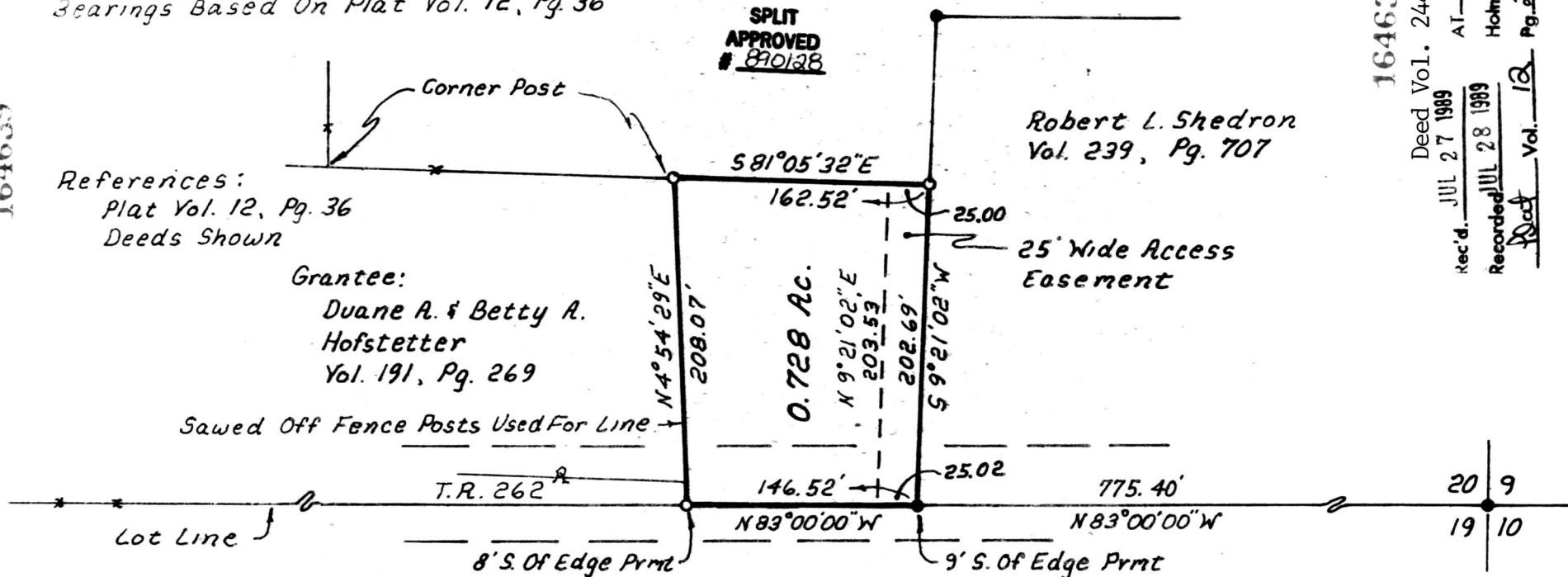
SPLIT  
APPROVED  
# 890138

Robert L. Shedron  
Vol. 239, Pg. 707

References:  
Plat Vol. 12, Pg. 36  
Deeds Shown

Grantee:  
Duane A. & Betty A.  
Hofstetter  
Vol. 191, Pg. 269

Sawed Off Fence Posts Used For Line



164639

Deed Vol. 1. 244 Pg. 247

Rec'd. JUL 27 1989

Recorded JUL 28 1989

AT 1:30 O'CLOCK P.M.

Holmes Co. Ohio Fees \$5.00

Vol. 12 Pg. 269 Recorder Richard Craven

I Certify This Survey To Be Correct  
To The Best Of My Knowledge.

Donald G. Long April 27, 1989  
Donald G. Long P.S. 7115  
LONG SURVEYING INC.  
13301 T.R. 503  
Big Prairie, Ohio 44611



S.E. Cor. House  
N 17° W, 59.7'  
& Road E. 114'  
30" Twin Maple  
W/ \*\* W. 71.5'