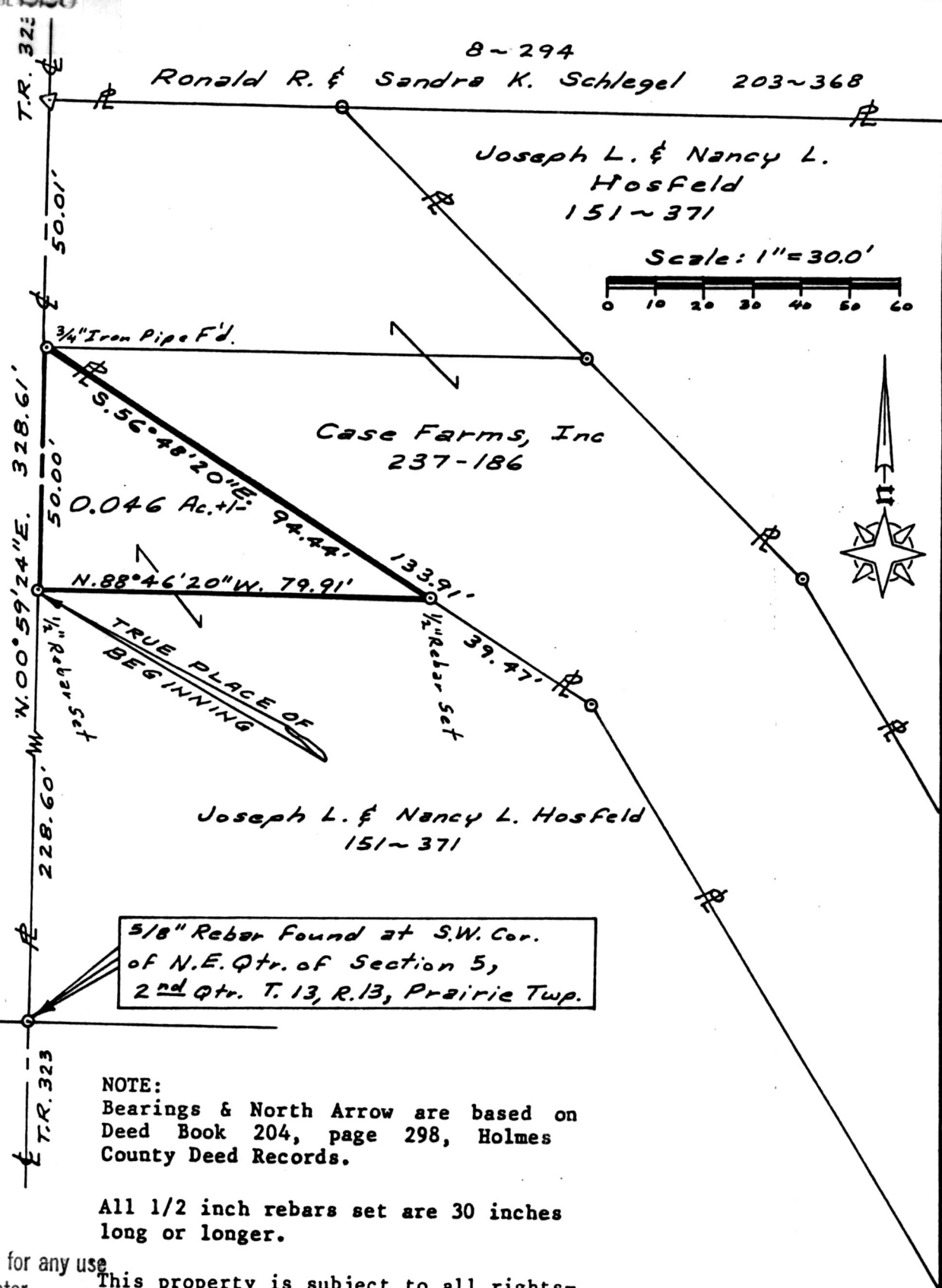


Buckeye Land Surveying, Inc.
George W. Johnson 215 South Fifth Street, R. • Columbus, Ohio 43212 (614) 622-4210
Professional Land Surveyor "Service is more than a promise"

2-314
Glenn & Gladys Schlegel 129~125



5/8" Rebar Found at S.W. Cor. of N.E. Qtr. of Section 5, 2nd Qtr. T. 13, R. 13, Prairie Twp.

SPLIT APPROVED # 890084

NOTE: Bearings & North Arrow are based on Deed Book 204, page 298, Holmes County Deed Records.

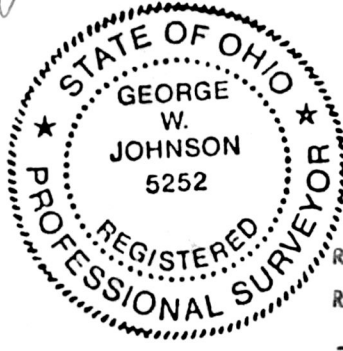
(0.046 Ac.)

All 1/2 inch rebars set are 30 inches long or longer.

This plat not approved for any use that generates wastewater.

This property is subject to all rights-of-way, easements, and restrictions of record or implied, if any, and are not necessarily shown on this plat.

Pertinent Documents: {D.B. 237, pg. 186}, {D.B. 204, pg. 298}, {D.B. 151, pg. 371}, {D.B. 203, pg. 368}, {D.B. 224, pg. 49}, {D.B. 232, pg. 126}, {D.B. 129, pg. 125}, {P.B. 8, pg. 294}, {P.B. 10, pg. 267}, {P.B. 10, pg. 595}, Holmes County Deed Records.



Deed Vol. 243 Pg. 492

Rec'd. MAY 25 1989
Recorded MAY 26 1989
Plat Vol. 12

JOSEPH L. HOSFELD and NANCY L. HOSFELD TO CASE FARMS, INC.
AT 3:04 O'CLOCK PM
Holmes Co. Ohio Fee \$5.00
Recorder Richard G. ... 046 Ac. +/-

I hereby certify that this plat is correct to the best of my knowledge and belief.
BUCKEYE LAND SURVEYING, INC.

George W. Johnson
George W. Johnson, P.S. #5252

Being a part of the Northeast Quarter of Section 5, Township 13 North, Range 13 West, in the Township of Prairie, in the County of Holmes, and in the State of Ohio.

Scale: 1" = 30.00' Date: November, 1988

MAP OFFICE COPY