

MAP OFFICE COPY

VOL 12 PAGE 114



SCALE: 1" = 100'

- STONE FOUND
- 5/8" REBAR SET
- 5/8" REBAR WITH I.D. CAP SET
I.D. CAP MARKED "BAKER 6938"

162078

RIPLEY TOWNSHIP
S.W. QTR. SECTION 13
T-17N R-14W
HOLMES COUNTY, OHIO

REFERENCES:
PLAT VOL. 10 PAGE 622
BEARINGS FROM PLAT VOL. 11
PAGE 4
VARIOUS DEEDS AS SHOWN

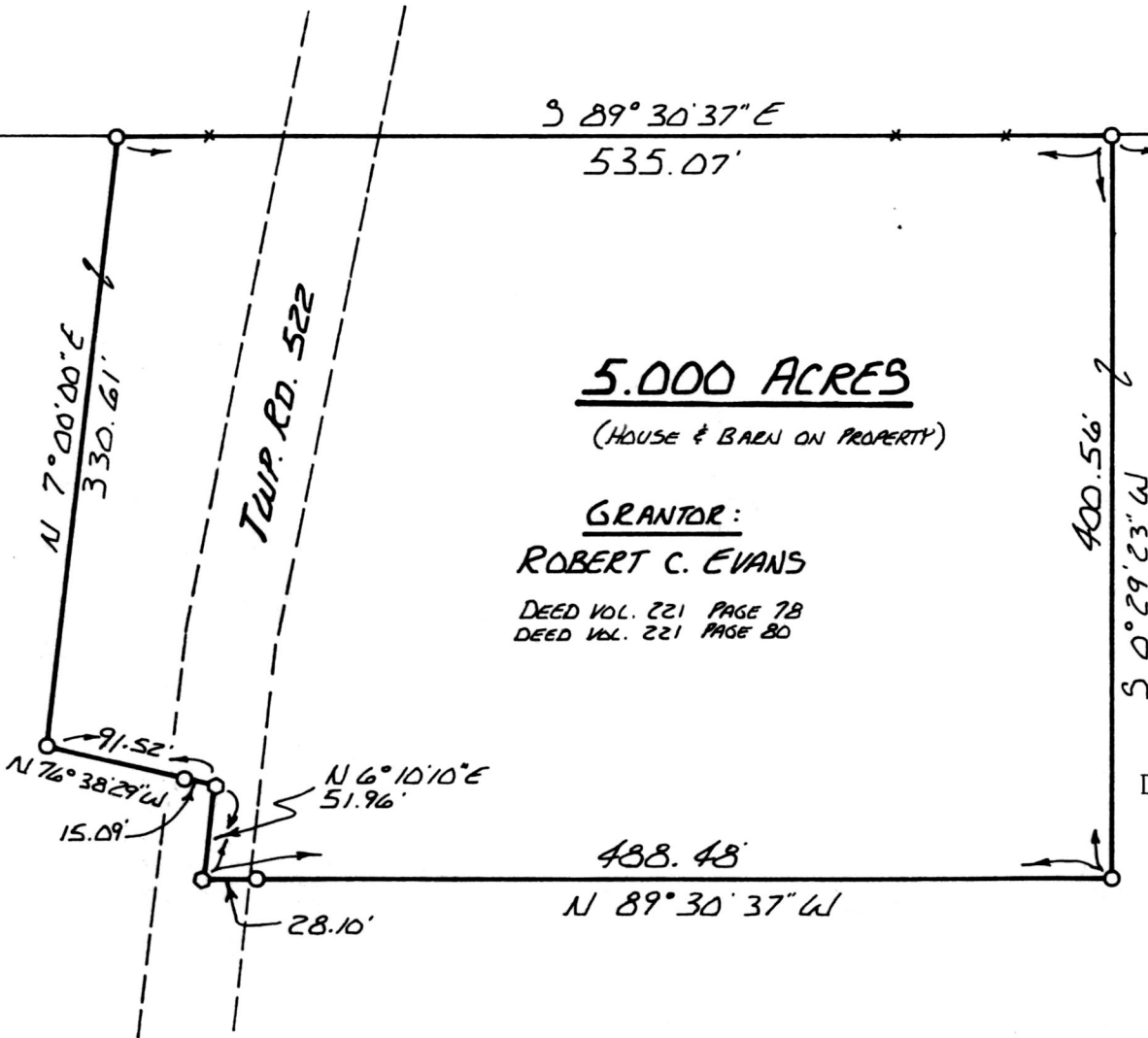
13 13
13 13

DONALD E. EWING
174-346



I CERTIFY THIS SURVEY TO BE CORRECT
TO THE BEST OF MY KNOWLEDGE.

Donald C. Baker
DONALD C. BAKER P.S. 6938
4321 TR 252
GLENMONT, OH.
NOV. 25, 1988



5.000 ACRES
(HOUSE & BARN ON PROPERTY)

GRANTOR:
ROBERT C. EVANS
DEED VOL. 221 PAGE 78
DEED VOL. 221 PAGE 80

162078
DEC 13 1988
REC'D.
AT 10:27 O'CLOCK AM
RECORDED DEC 14 1988
Plat VOL 12 PG. 114
Holmes Co. Ohio Fee: 5.00
Richard Gruen Recorder

Don M
Deed Vol. 241 Pg. 570
REBAR SET ON EAST SIDE STONE FOR REFERENCE

1303.50'
51° 32' 07" W
QTR. SEC. LINE
1644.83'