

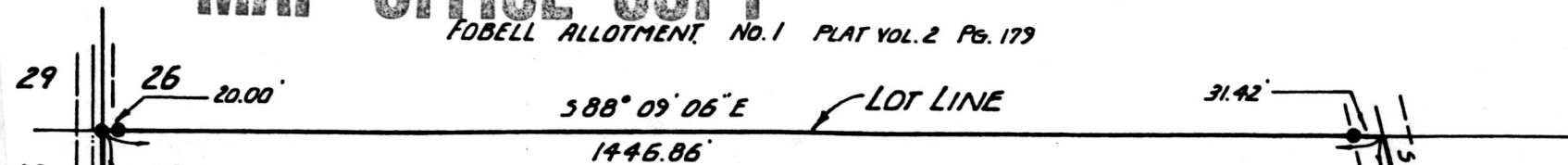
MAP OFFICE COPY

161897

• SURVEY PLAT •
MONROE TOWNSHIP
T-9N : R-8W
LOT 27 1ST QTR.
HOLMES COUNTY, OHIO

5-136-88

FOBELL ALLOTMENT NO.1 PLAT VOL.2 PG.179



LUTHER C. HOTHAM REALTY, INC.
AND
DAN T. HOSTETLER

27.807 AC.
DEED VOL. 201 PG. 185

ROBERT J. & THELMA L.
THOMAS
DEED VOL. 198 PG. 327



SCALE 1"=200'



- IRON CORNER FND.
- IRON CORNER SET.
5/8" REBAR W/ I.D. CAP

TWP. RD 260

LOT LINE

28 1ST QTR.
4TH QTR.

27

IRON PIPE FND. 0.32' E.
OF CORNER, ON LINE.

EDWARD F. & SANDRA P.
MARKEL
DEED VOL. 219 PG. 801

NOTE: RECORD DISTANCE - 618.84'
PLAT VOL. B PG. 493

JACK E. & CAROLE L.
HASTINGS
DEED VOL. 207 PG. 393
" " 207 " 395

RR SPK. FND. 0.65' E.
OF CORNER, ON LINE.

STATE ROUTE 60

BEARINGS ARE BASED ON THE
WEST LINE OF R.J. THOMAS,
AS REPORTED IN SURVEY PLAT
VOLUME B PAGE 7.

I CERTIFY THIS SURVEY TO BE CORRECT TO THE BEST OF MY KNOWLEDGE

Edward A. Gasbarre 30TH SEPT. 1988

EDWARD A. GASBARRE P.S. 7036
R.W. GASBARRE & ASSOCIATES, INC.
P.O. BOX 44, WINDOSTER, OHIO 44691
PH. (216) 264-9499

STATE OF OHIO
EDWARD A. GASBARRE
7036
REGISTERED PROFESSIONAL SURVEYOR

161897

Rec'd. NOV 23 1988 AT 10:42 O'CLOCK AM

Recorded NOV 28 1988 Holmes Co. Ohio Fee \$1.00

Plat Vol. 12 Pg. 105 Recorder *Richard Brown*