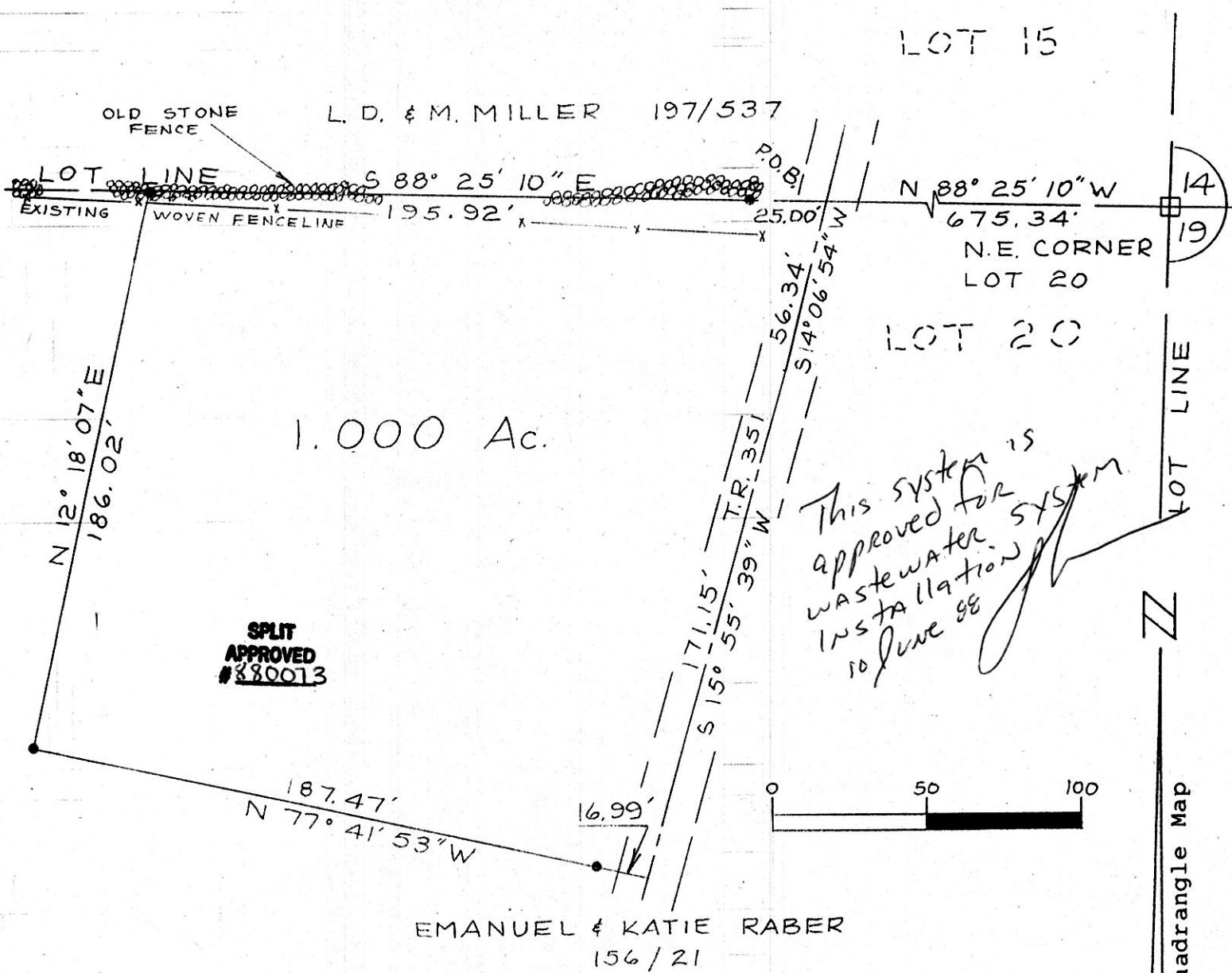


☐ = Recovered stone with "X"

Research Data:

Deeds: 197/537 156/21

● = Set 3/4" X 30" Rebar with Aluminum cap



MAP OFFICE COPY

Boundary Survey
 for
 Emanuel Raber
 in
 Lot 20, Fourth Quarter
 Range 6W, Township 9N
 Berlin Township
 Holmes County
 Ohio

160114

JUN 13 1988

REG'D. _____
 AT 2:17 o'clock PM
 RECORDED _____
 Plat VOL 12 PG. 12
 Holmes Co. Ohio Fee 5.00
 Richard Gruen Recorder

Deed Vol. 239 Page 371

Scale: 1" = 50'

May 17, 1988



Prepared By
G.A. STEWART INC.
 450 S. 4th Street (614) 622-2783
 COSHOCTON, OHIO 43812

R. Scott Johnson
 R.P.S. No. 6791

Bearings based on 7 1/2" Quadrangle Map